



First Step

TO
BETTER HEATING
AND PLUMBING
FOR YOUR HOME

AMERICAN-Standard
HEATING PLUMBING

Ensuring the Nation's Health and Comfort

Look for the Mark of Merit

Like the sterling mark on silver the **AMERICAN-Standard** Mark of Merit on heating equipment and plumbing fixtures stands for the very finest. You will find this Mark of Merit on radiator heating equipment and water heaters engineered for efficient, economical, carefree performance. On winter air conditioners and warm air furnaces, too, it is your assurance of quality and dependability. It identifies kitchen sinks and laundry trays designed to make housework quicker and easier. And on lavatories, bathtubs, and water closets it symbolizes the convenience, beauty, and healthful cleanliness these fixtures bring to your home.

The Mark of Merit guides you to heating equipment and plumbing fixtures which represent more than half a century devoted to research, engineering, and manufacturing . . . products upon whose development millions of dollars in research have been spent . . . products perfected through years of manufacturing experience. It guides you to the world's largest and most complete line of heating equipment and plumbing fixtures.

And the completeness of the **AMERICAN-Standard** line is important to you. It assures correct selection for every size and type of home and for every budget. But just as important is the fact that every product is backed by the best-known name in heating and plumbing—**AMERICAN-Standard**.

Remember this name when you buy heating equipment and plumbing fixtures for your home. And remember to look for the Mark of Merit—your guide to finest quality that costs you no more.



Look for the Mark of Merit on plumbing fixtures, and you're sure to get the finest that money can buy.



Compare all types of heating equipment, and you'll find none better than that which bears the Mark of Merit.

AMERICAN-Standard HEATING EQUIPMENT...FOR COMFORT, CONVENIENCE, ECONOMY, AND LASTING SATISFACTION



Planning to build, buy, or modernize your home?

If so, this book is written for you... for it tells what you should know about modern heating with **AMERICAN-Standard** Heating Equipment.

It offers a wide selection of Heating Equipment to meet the requirements of any home... large or small... with or without a basement... and for any fuel.

It explains the expert engineering and manufacturing skill which makes **AMERICAN-Standard** products the finest to be had.

And it's important to be sure that your home has the finest heating equipment, for good heating is economical heating and it will contribute so much to the lasting comfort and convenience of your family.

FOR REAL COMFORT

AMERICAN-Standard Heating Equipment is at its best when the thermometer tumbles and wintry winds whistle around the doors and windows. That's the real test... when abundant, uniform warmth is needed to offset drafts, keep the floors warm, and safeguard your health and comfort.

FOR CAREFREE PERFORMANCE

When **AMERICAN-Standard** Heating Equipment is automatically fired, you are never "tied down" by heating chores. You can go visiting or to the movies, secure in the knowledge that your home will be as cozy on your return as when you left it. In fact you can maintain any temperature you want, day or night, simply by setting the room thermostat.

MAKE THE FIRST STEP THE RIGHT STEP

To countless thousands of homeowners **AMERICAN-Standard** means the finest heating. And each year thousands more

discover the comfort, convenience and economy this heating equipment affords. That's why more homes today enjoy heating by **AMERICAN-Standard** than by any other single company.

You can also choose heating equipment that's right for your home... and right for your budget too... for when you select **AMERICAN-Standard** products you get the finest,—and they cost no more than others.



Remember... the selection of heating equipment is usually a once-in-a-lifetime step. Be sure it's a step in the right direction. And you can be sure when you choose **AMERICAN-Standard**.



The man who likes flowers and plants will derive pleasure from this unique basement conservatory and potting room. The heating unit is the Arcoliner Wet Base Oil Boiler, with concealed burner.

Four Methods

OF MODERN RADIATOR HEATING

The radiant heating systems most commonly used for homes are briefly described and diagrammed on this page. Your heating and plumbing contractor or architect can help you determine which system is best adapted for your specific requirements and budget.

GRAVITY HOT WATER

An "open" hot water system consists of a boiler, radiators, piping and a small tank open to the atmosphere to permit expansion of the heated water. The entire system is filled with water. As the water in the boiler is heated, it becomes lighter and ascends through the flow line to the radiators. The return line carries the cooler water back to boiler to be reheated. Thus a continuous circulation is maintained as long as there is fire in the boiler. A variation of the gravity system is the "closed" system, which operates under pressure.

FORCED HOT WATER

This is usually a "closed" system, with a circulator or pump which accelerates the circulation of hot water through the system whenever the thermostat calls for heat. When automatically fired the use of a flow control valve prevents hot water flowing to radiators unless circulator operates, so that the boiler water is always hot and starts circulating to radiators only when pump functions at the impulse

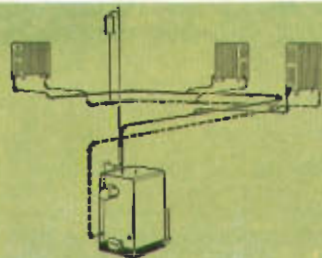
of the room thermostat. Benefits claimed are higher water temperatures, smaller piping and radiators, faster heating and moderate installation cost. The One Pipe system, using a single main that requires less pipe and fittings, is a variation of the usual two pipe job.

ONE PIPE STEAM

This is the simplest and lowest cost radiator system. It has an absolute minimum of piping, valves, and accessories. In operation, the heating boiler converts water into low pressure steam, which circulates through a single pipe to radiators which heat the rooms. As the steam in the radiators condenses back to water it returns to boiler through the same single pipe. Special Arco air valves improve the performance of this system, and with automatic firing, assure balanced and uniform heating of radiators.

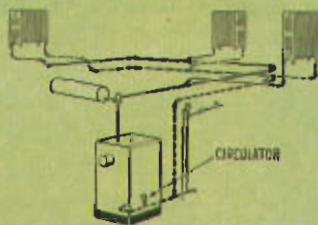
TWO PIPE STEAM

The sketch below diagrams a basic low pressure two pipe steam system which is subject to many variations. A two pipe installation is generally associated with vapor or vacuum heating, which require additional piping and special equipment in the way of thermostatic traps, pumps, controls and other devices. Two pipe vapor and vacuum systems are generally installed only in large structures such as apartments, office buildings, institutional buildings, etc.



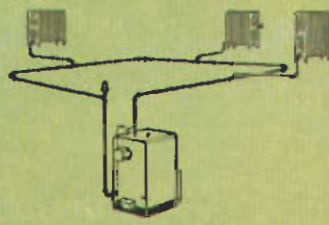
GRAVITY HOT WATER

Flow lines in black; return lines dotted. "Open" system. Expansion tank located at highest point.



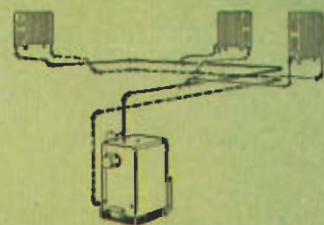
FORCED HOT WATER

"Closed" system with pressure expansion tank and circulator. Flow lines black; return lines dotted.



ONE PIPE STEAM

A single main in basement and one branch line to each radiator.



TWO PIPE STEAM

Black lines indicate flow main and risers to radiators—return lines are dotted.

HAND FIRED OR STOKER

SEVERN BOILER— STOKER FIRED

Years ahead in appearance, design, and engineering, the Severn is just right for small and medium sized homes. Its ingenious design assures top-notch performance with any standard make of stoker. Stoker fired model has special openings which allow stoker to operate from front or either side of boiler, according to installation conditions.

Also available with Biltin Taco Tank Type Heater for providing domestic hot water.

EXBROOK BOILER— STOKER FIRED

A new addition to the line of boilers by **AMERICAN-Standard** is the Exbrook, made for larger homes and small to medium sized apartments and other buildings. It is correctly designed for easy installation of stoker, and has the right sized combustion space and ample heating surface for good combustion and efficient performance.

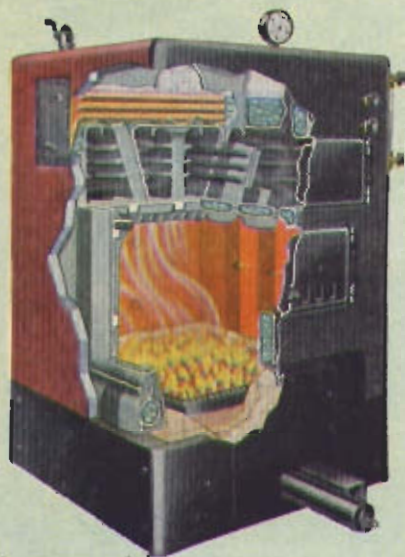
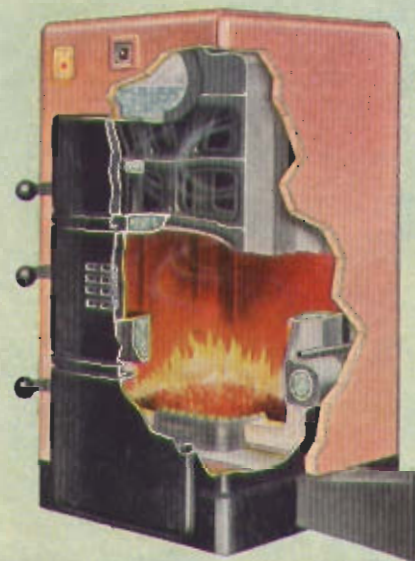
Also available with Biltin Taco Tank Type Heater for providing domestic hot water.

Proper indoor warmth is one of the first requisites for the health and comfort of your family . . . that's why it is so important to select the right heating unit for your home. And many thousands of satisfied users will tell you that just the right unit can be found among the outstanding **AMERICAN** coal fired Boilers shown on these pages.

They are modern in design with colorful streamlined metal jackets finished in Canyon Two-Tone Red. Advanced features which assure top efficiency and economy include scientifically proportioned combustion chambers that promote clean, complete burning of fuel; water-backed heating surfaces that effectively absorb the direct heat of the fire; long flue travel which extracts every vestige of usable heat from the hot gases before they leave the boiler. Durable cast iron construction promises long wear, and most of the boilers can be equipped with Biltin Taco Tank Type Water Heaters for providing domestic hot water during the heating season.

By installing a stoker suitably adapted to the boiler, you also get automatic heating with less care and attention, a cleaner basement, and more efficient combustion of the coal.

Finally, and very important to you, these boilers bear the **AMERICAN-Standard** Mark of Merit—your guide to health and comfort, your assurance of the finest.



BOILERS

THE SEVERN—the universal boiler for all fuels—is popular with budget-wise home owners who want the best for comfort, economy, and easy caretaking. Modern design includes ball shaped, air-cooled door handles, and long detachable grate shaker handle.

Steam boilers available with Biltin Taco Tank Type Heater for providing domestic hot water.

THE ARCOLINER DRY BASE BOILER—a modern unit for small homes, burns coal, hand fired, with minimum care and attention. As efficient as it is attractive, the Arcoliner is noted for fuel-saving operation and quick heating, and will give years of good service.

Steam boilers available with Biltin Taco Tank Type Heater for providing domestic hot water.

THE ARCOLA provides low cost hot water heating for small homes, with or without basements. When desired, it can readily be installed in a utility room or other available space on the first floor. The Arcola itself acts as a radiator while heating others in adjacent rooms. Water circulating under ashpit prevents overheating of floor.

THE REDFLASH is well known for its high overall efficiency and sturdy construction. Thousands of satisfied users are enjoying its abundant warmth and proved economy. It is part of a complete line for larger homes as well as small to medium size apartments and other buildings.



SEVERN BOILER—
HAND FIRED



ARCOLINER DRY
BASE BOILER—
HAND FIRED



ARCOLA BOILER—
HAND FIRED



REDFLASH BOILER—
HAND FIRED



The dominant feature of this basement recreation room is the Oakmont Oil Heating Unit, with concealed Arcoflame Oil Burner, a natural choice for beauty, cleanliness and completely automatic operation.

Automatic Heating AT THE FLICK OF A FINGER!

What most homeowners want today is heating that is automatic and requires little or no attention. They want comfort that can be produced by the mere setting of a thermostat on the wall and that can be maintained indefinitely without work or worry. Thanks to modern AMERICAN Heating Boilers the benefits of automatic heating are easily obtainable in any home, regardless of size, and with any fuel.

AUTOMATIC GAS HEATING

Radiator heating with gas is preferred by many homeowners, particularly in localities where gas is abundant and moderate in cost. Gas is clean, simple to control, and heating with gas can be completely automatic. The fuel requires no storage space, and the amount burned is accurately metered and paid for after using. There's no waste. After lighting the pilot and setting the thermostat according to the demands of the weather, an occasional visit to the basement to check the water in the system, and an annual inspection of equipment and controls is about all the attention required.

AUTOMATIC OIL HEATING

Oil is another fuel that finds much favor with homeowners who want maximum heating comfort automatically. It is a liquid fuel and is stored in a suitable tank on the premises. Burning oil efficiently



is largely a matter of team work between the oil burner, which produces the flame, and the boiler, which utilizes the heat for warming the radiators in the rooms. The on and off cycles of the burner are controlled by the action of the room thermostat, which is set at any temperature desired. As a result users enjoy complete freedom from manual attention, with the exception of ordering fuel and keeping the equipment in good operating condition.

AUTOMATIC STOKER HEATING

Modern stokers now available eliminate the manual attention and labor usually associated with coal burning. They not

only feed the coal and create the draft by mechanical means, but some models remove the ashes as well. The bin feed type stoker also transports the coal to its hopper directly from the coal bin, thereby making it unnecessary to fill the hopper by hand. The entire operation of the stoker is controlled by the room thermostat, according to the temperature it is desired to maintain.

THE RIGHT BOILER

On the preceding and following pages of this booklet you will find illustrations and details of modern AMERICAN Heating Boilers for automatic firing with coal, oil or gas. They are scientifically designed to perform with the efficiency and economy that brings complete comfort and makes the heating dollar go the farthest. Handsome jackets add the attractive appearance demanded in modern basements, and sturdy construction assures long, dependable service.

Since the heating boiler is a major factor in getting the best results from any automatic radiator heating system, it is important to select the right one. This is easily accomplished by choosing an AMERICAN Heating Boiler adapted for the fuel you wish to use.



Combine carefree comfort, utility and an attractive recreation room with the Empire Gas Boiler installed in this basement. Its handsome Canyon Two-Tone Red jacket harmonizes with surroundings.

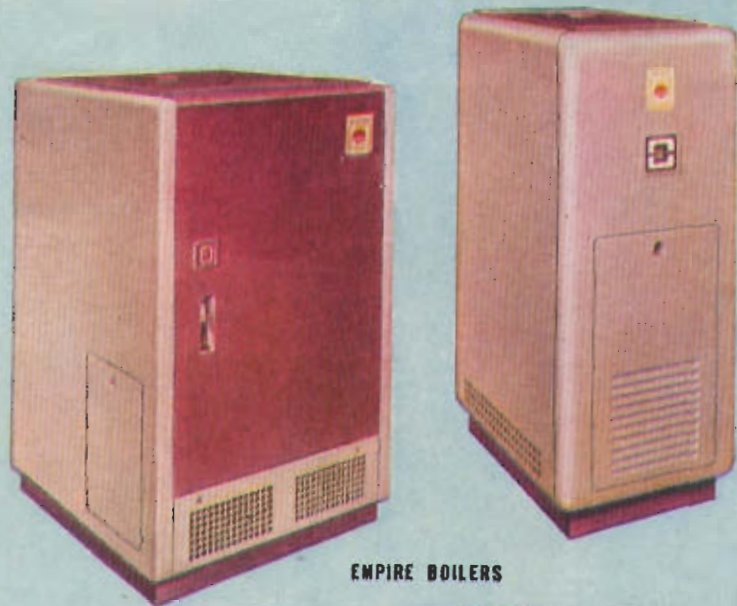
GAS FIRED BOILERS

For economical and satisfactory gas heating, it is essential to select a boiler that is scientifically designed to burn gas efficiently and extract the maximum heat from the flame. To accomplish this result, AMERICAN Gas Boilers, engineered by gas heating experts, are built of individual pin type cast iron sections, tightly assembled with iron to iron leakproof joints. The intervening pin-studded spaces between the sections provide the efficient heating surface which absorbs practically all the available heat in the hot gases before they enter the chimney. In addition, raised drilled port burners of approved design provide a hot, clean, blue flame. Precision controls afford completely automatic and safe operation.

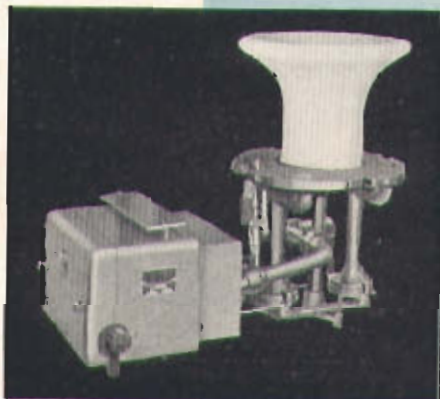
AMERICAN Gas Boilers comply with safety requirements approved by the American Gas Association. They are ideally suited for homes of any size, with or without basements, and even for individual apartments. They take up little room wherever installed—in the basement, the kitchen, utility room, an unused closet, or other available space.

With any AMERICAN Gas Boiler you select you can enjoy to the utmost the delightful comfort of radiant heating and its effortless operation with gas fuel.

Above—Empire Gas Boilers, with scientifically designed features, accurate controls and smart Canyon Two-Tone Red jacket, provide all the benefits of carefree automatic gas heating. Standard Gas Boilers—typical model at *lower right*—are equally efficient, answer all requirements where de luxe appearance is not so important. Both are made for steam or water—in complete range of sizes. The AMERICAN Gas Converter, *lower left*, offers economical, automatic heating—permits conversion of most boilers, warm air furnaces and winter air conditioners to gas fired units within a few hours.



EMPIRE BOILERS



AMERICAN GAS CONVERTER



STANDARD BOILER, TYPE 1-B

OIL FIRED BOILERS

To get the most out of your Oil Burner, be sure that it is installed in an **AMERICAN** Oil Fired Boiler.

AMERICAN Oil Boilers were designed and developed by engineers thoroughly versed in the science of oil heating. Combustion space is of correct proportions to insure complete combustion; long flue travel and effective heating surfaces absorb maximum heat from hot gases. This results in shorter firing periods, quicker heating, better comfort and greater economy—factors that produce complete satisfaction. An added convenience at small extra cost is a Built-in Taco Tank or Tankless Type Water Heater, for providing year 'round domestic hot water.



**ARCOLINER (WET
BASE) OIL BOILER,
WITH JACKET EXTENSION**



**ARCOLINER (WET
BASE) OIL BOILER,
WITH FLUSH JACKET**

ARCOLINER (WET BASE) OIL BOILER

Especially designed to bring the advantages of clean, carefree, automatic oil heating to small homes. Combustion space, scientifically proportioned and air tight, insures burning of oil without waste. Extra long, two pass flues with multi-finned surfaces, absorb maximum heat from hot gases. Water-surrounded combustion space increases efficiency and permits installation in a utility room or other first floor location. Available with or without jacket extension, as illustrated at left.

ARCOLINER (WET BASE) ARCOFLAME OIL HEATING UNIT

Consists of an Arcoliner Wet Base Oil Boiler (with or without Jacket Extension) and a flange mounted Arcoflame Oil Burner bolted directly to the boiler... a guarantee of accurate installation that insures extra efficiency in operation.



**MODEL "C"
ARCOFLAME OIL BURNER**

ARCOFLAME OIL BURNER MODEL "C"

Scientifically engineered and precision built to produce the famous "Sunflower" flame that insures complete combustion, more heat and greater economy. Burns No. 2 or No. 3 fuel oil with fuel saving efficiency. Approved by Underwriters' Laboratories.

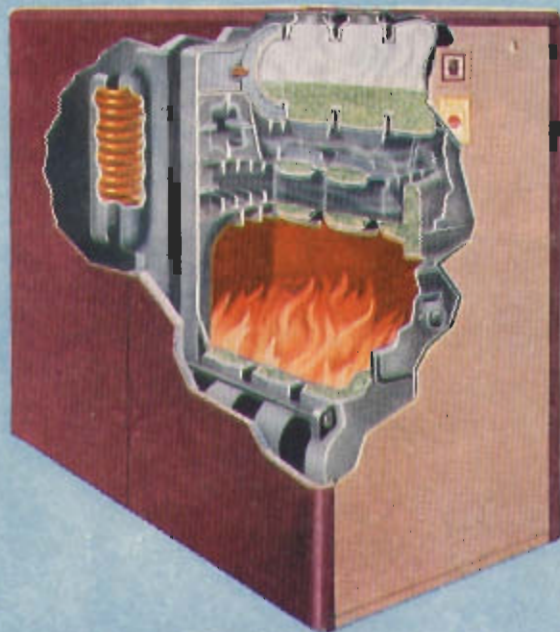


OIL HEATING UNITS



SEVERN OIL BOILER

Operates efficiently with the Arcoflame Oil Burner or any other good burner to provide effortless heating comfort in small to medium sized homes. Air-tight combustion space is proportioned for economical burning of oil. Long flue passages provide ample heat-absorbing surface, prevent loss of usable heat up the chimney. Biltin Taco Tank or Tankless Type Heater, available at slight extra cost, provides year 'round domestic hot water. Also furnished as a complete Oil Heating Unit with a special Arcoflame Oil Burner.



OAKMONT ARCOFLAME OIL HEATING UNIT

Consists of the Oakmont Oil Boiler and Arcoflame Oil Burner specially designed to assure correct installation and fuel-saving operation. Features include a long flue gallery with finned surfaces to extract maximum heat from hot gases before they pass to chimney... extra large connections between sections for quick heating pick-up... and scientifically designed combustion space for efficient oil burning. Biltin Taco Water Heater, Tank or Tankless Type, to provide year 'round hot water, is optional at small extra cost. Boiler is available separately, for use with any good oil burner.



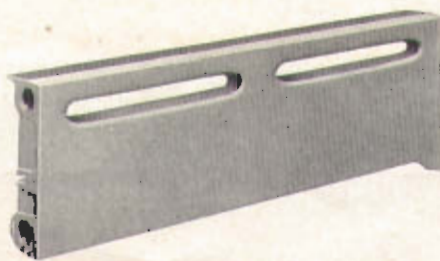
EXBROOK OIL BOILER

A new boiler engineered for larger-than-average homes and small to medium sized apartments and other buildings. Combustion space is proportioned for clean, efficient oil burning. Multi-finned flues provide maximum heat-absorbing surface, assure economical performance. Machine ground contact surfaces of sections and doors prevent wasteful inleakage of air and escape of odors. Large connections between sections permit rapid heat response and installation of Biltin Taco Water Heater. Also available as Oil Heating Unit with special Arcoflame Oil Burner.

AMERICAN BASEBOARD RADIANT PANELS



Type "R" Radiant Panel—Provides radiant heat only. Measures 24 in. long, 8 in. high and 2 in. thick.



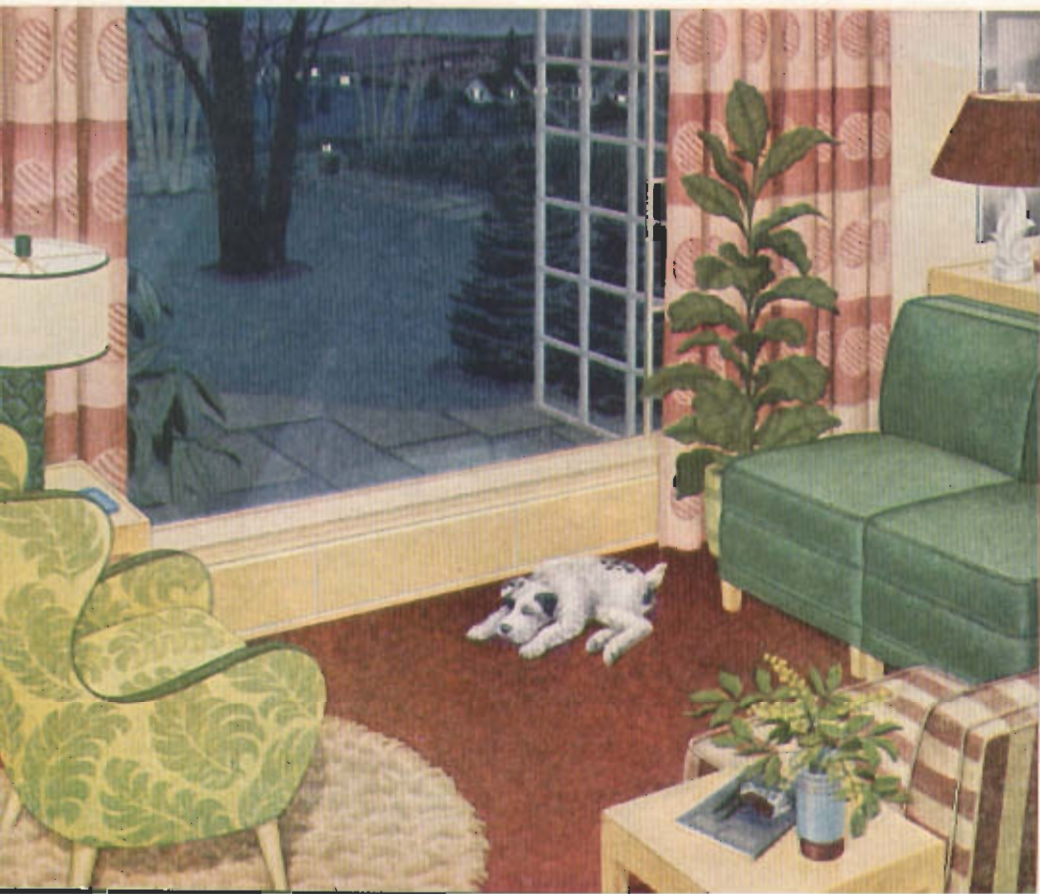
Type "RC" Radiant Panel—Provides both radiant and convected heat. Dimensions are the same as Type "R" Panel.

These newly developed Baseboard Radiant Panels send radiant heat rays . . . like shafts of warm sunshine . . . straight into the room . . . ankle high . . . warming everyone and everything they touch. The room air is also quickly warmed by contact with the heated Panels and circulates gently to every nook and corner. Here is hearing comfort at its best . . . warmth that is mild, clean, uniform—without drafts—with particular emphasis on warm floors, where comfort begins.

AMERICAN Baseboard Radiant Panels replace ordinary wood baseboards and when recessed occupy little more than an inch of floor space. The Type "R" Panel provides radiant heat alone, whereas the Type "RC" combines both radiant and convected heat and is used where heating requirements exceed the average. The Panels are made of cast iron for permanence and have a smooth flat surface that can be painted to match surroundings. All valves, piping and accessories are readily accessible.

There is no finer heating than that provided by AMERICAN Baseboard Radiant Panels. And they are easily installed by your heating contractor. Literature with more details sent on request.

At left—An attractive installation of an assemblage of Type "R" AMERICAN Baseboard Radiant Panels—showing how they become an integral part of the room.

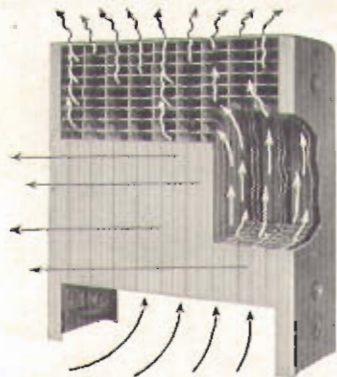


THE SUNRAD RADIATOR

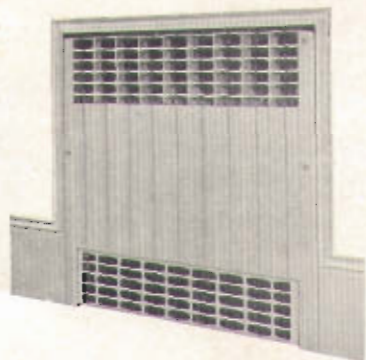
Ingenious in construction and design, the Sunrad is a smart, space-saving, graceful radiator, for homes and other modern buildings. Built entirely of durable cast iron, it presents a compact, cabinet-like appearance . . . it needs no separate enclosure . . . can be decorated to harmonize with walls or surroundings. Inlet opening at bottom of the radiator can be provided with a removable metal grille that matches the lattice design of top outlet. Available in two convenient heights and depths, the Sunrad is easily installed . . . fully recessed, semi-recessed, or free-standing . . . as you prefer.

The panelled front, which corresponds to the tubes on ordinary radiators, sends active radiant heat directly to the living zone, or comfort level, of the room. At the same time, there's a continuous circulation of convected heat through the wide "flues" or passages of the Sunrad which warms the air in the room and counteracts window drafts. The Sunrad Radiator is equally efficient with steam, vapor or hot water.

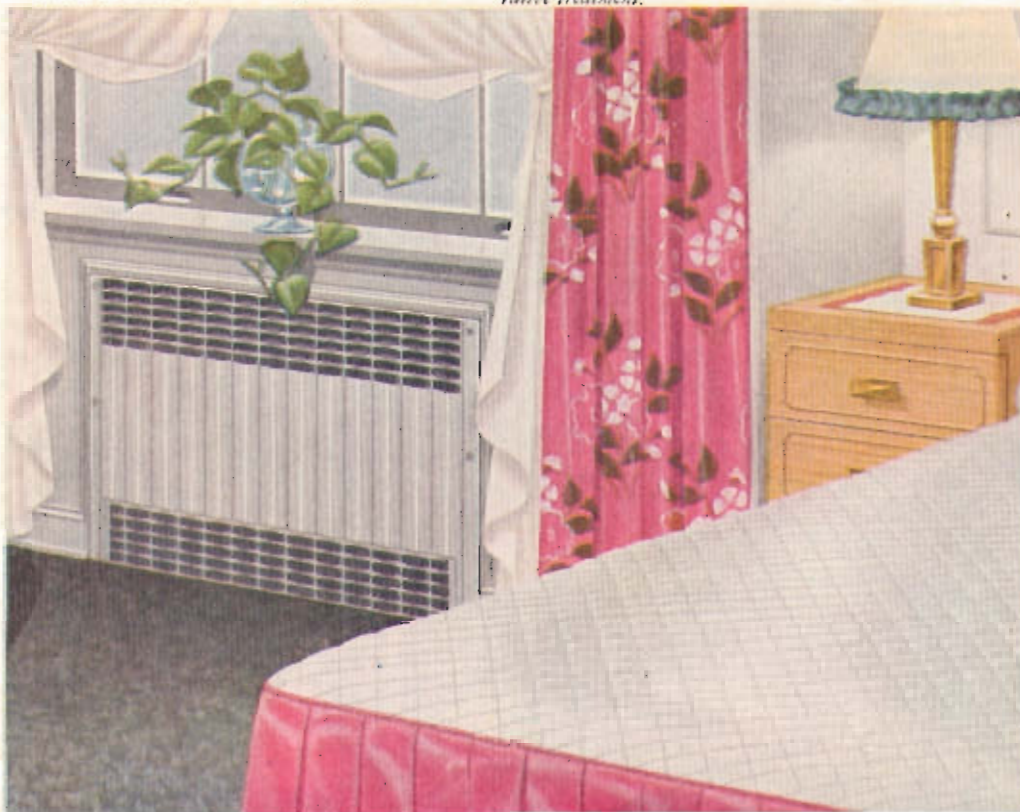
At right—A completely recessed Sunrad Radiator occupies no floor space and blends harmoniously with wall and furnishings in this cheerful room. It combines comfort and attractive appearance in the biggest degree. The location under window is ideal for providing draft-free warmth.



Above—Cutaway view of Sunrad Radiator, free-standing model without bottom grille, reveals construction features and flow of heat.



Above—The Sunrad Radiator shown here is a typical fully recessed installation, flush with baseboard molding and easily adaptable to any decorative treatment.

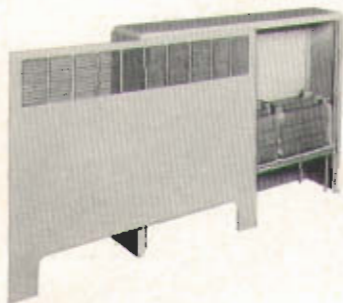


ARCO CONVECTORS

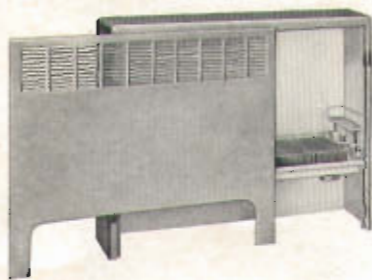
Comfort-loving homeowners who prefer their radiators invisible will find that Arco Convectors and AMERICAN Enclosures offer the right selection. These units, designed for concealed installation, heat by convection. In other words, air enters the enclosure through the arched inlet at the bottom, flows over the Convector and is properly heated. It emerges from the upper grille of the enclosure, quickly circulates throughout the room and thereby provides uniform, comfortable warmth.

AMERICAN Enclosures are correctly proportioned to allow the right amount of air to pass over the heated surfaces of the Arco Convectors to obtain the best heating results. They can be recessed, partially recessed or installed free standing against the wall, and may be decorated to match surroundings. Their use with either type of Arco Convector illustrated, results in attractive, space saving installations which effectively conceal the heating unit from view. A wide selection is available to suit any need.

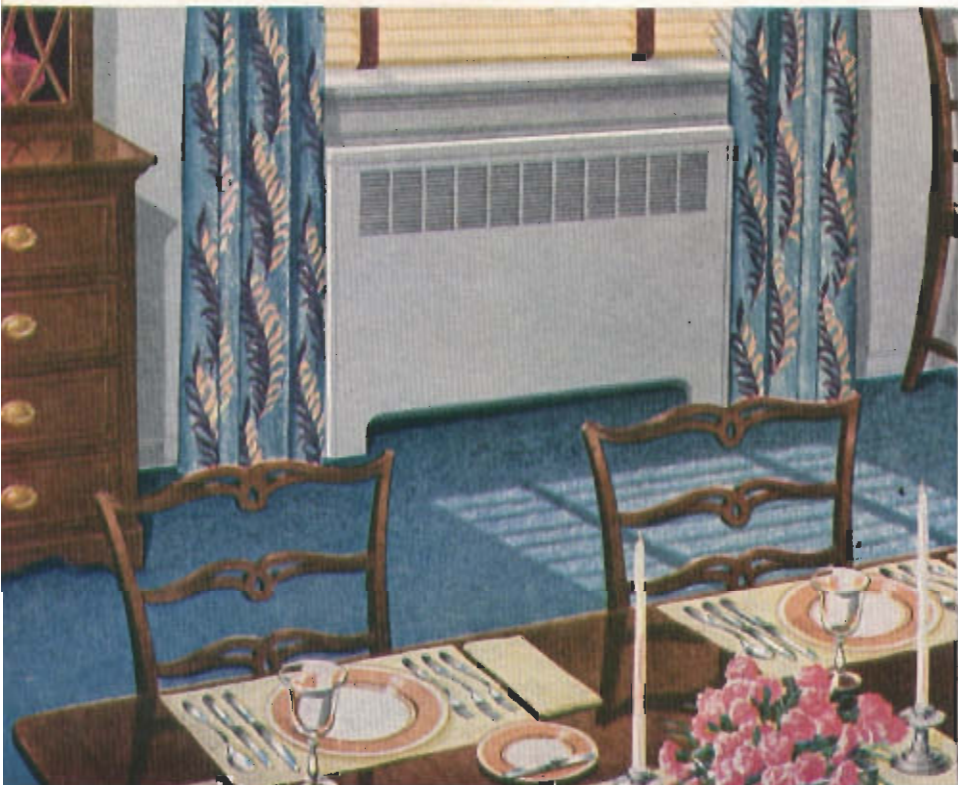
Illustrated at left is a Type NFS AMERICAN Enclosure installed semi-recessed to conceal an Arco Convector. This smart installation not only saves floor space and improves the appearance of the room, but also provides efficient heating which permeates every nook and corner for cozy comfort.



Illustrated above is an AMERICAN Enclosure with front panel removed to reveal the Arco Cast Iron Convector, a sturdy unit with integral cast iron fins that increase efficiency and promise many years of heating satisfaction.

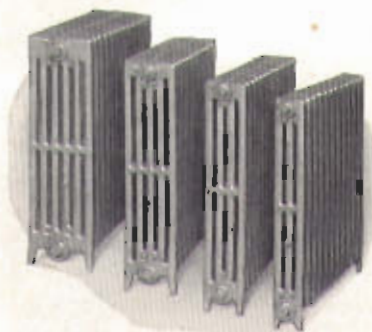


A similar AMERICAN Enclosure, with front panel removed, shows the Arco Multifin Convector, a light weight non-ferrous unit with closely spaced fins that give off plenty of heat. For all systems except one-pipe steam.



ARCO RADIATORS

Arco Radiators occupy nearly one-third less space than old style radiators with equivalent heat output. With their slenderized tubes and compact design, they are graceful and attractive, and can be decorated tastefully to match surroundings. Ideal for recessing (as shown at right). Arco Radiators are furnished in a wide variety of widths, heights and lengths to suit the requirements of any installation.



Portraying the 4 widths of Arco Radiators; 7 $\frac{1}{2}$ ", 6", 4 $\frac{1}{2}$ " and 3 $\frac{1}{2}$ "



AMERICAN HEATING ACCESSORIES

AMERICAN Heating Accessories—Radiator Valves, Air Valves, Thermostats, Controls—are expertly designed and precision made to give lasting satisfaction. They make any heating system better. Insist on their use.

Illustrated at right are: No. 300 Multiport Air Valve (adjustable), for fast, equalized heating of all radiators on one-pipe steam jobs; No. 861 Hsrivent Valve for fast venting of mains; No. 999 Arco Packless Radiator Valve, which neither leaks nor requires repacking; No. 500 Airid Air Valve (non-adjustable), for normal venting. Ask your heating contractor about the complete line.



No. 300 Multiport Air Valve



No. 861 Hsrivent Valve



No. 999 Arco Packless Radiator Valve



No. 500 Airid Air Valve

HOW SUNBEAM *Winter Air Conditioning*

Winter Air Conditioning provides healthful warmth in the form of clean, humidified, refreshing warm air circulated throughout the home. Its advantages appeal to a great many homeowners and builders. For maximum enjoyment of all its benefits, we urge the selection of SUNBEAM Winter Air Conditioners, which possess construction features backed by more than half a century of experience and manufacturing know-how.

SUNBEAM Winter Air Conditioners, developed in our Institute of Heating Research, are scientifically designed and sturdily built to deliver the fullest measure of comfort and give years of satisfactory service with the lowest consumption of fuel. Encased in streamlined metal jackets, handsomely finished in Placid Two-Tone Blue, they are just right for the basement recreation room. SUNBEAM Winter Air Conditioners are made in a wide range of patterns and sizes to suit the need of any home, with or without a basement, for either manual or automatic

operation and to burn any fuel—coal, oil or gas. Various types are shown on the following pages. Among the many



functions of SUNBEAM Winter Air Conditioners which contribute to your family's health and comfort are air cleaning, humidification, air movement and a greater degree of summer comfort.

CLEAN AIR

The Air Filter used with SUNBEAM units is made up of two or more compressed mats of long, thoroughly interlaced Fiberglas fibers. These mats are held together with a sprayed-on binder

and treated with a patented fire-resistant adhesive. Their large filter area removes dust, dirt, soot, pollen and foreign matter. Clean air saves housework . . . curtains and drapes stay clean longer . . . walls, floors and furnishings require less attention.

HUMIDIFIED AIR

Healthful air in every room is possible with SUNBEAM Winter Air Condition-



ers because extra moisture may be provided by a humidifier located in the warm air chamber at the top of the unit. The

PROVIDES HEALTHFUL COMFORT



automatic float type humidifier has a series of porous "Vapoglas" plates set in a porcelain enameled pan to assure effective evaporating action. The automatic spray type humidifier breaks up the water into a fine spray easily absorbed by the heated air, and it can be automatically regulated by a room humidistat up-

stairs. Moist air permits the enjoyment of lower temperature and affords protection against respiratory ailments and deterioration in woodwork and furnishings.

AIR MOVEMENT

With a SUNBEAM Winter Air Conditioner heating your home, clean humid-

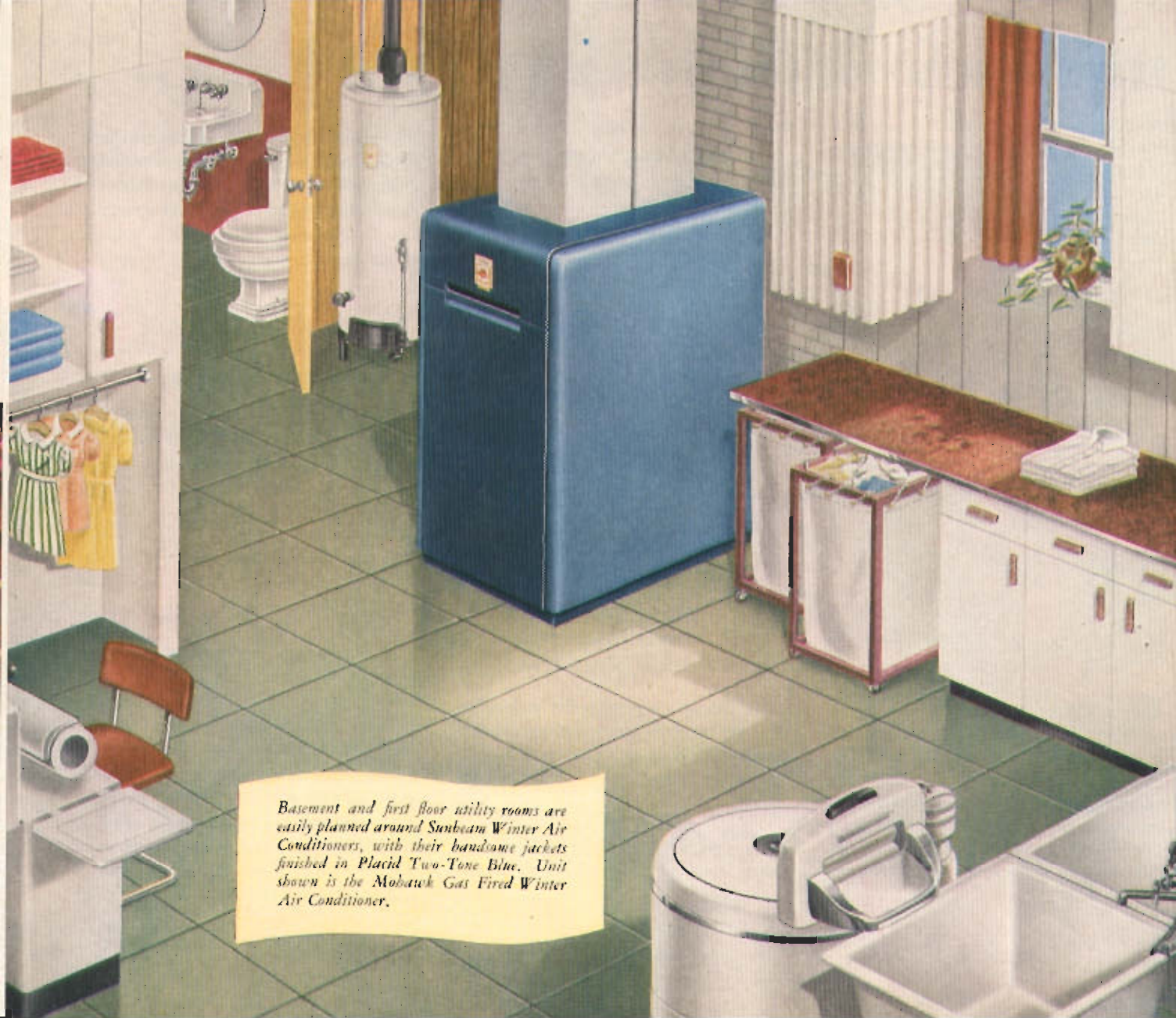
ified warm air is kept in almost constant circulation, so that it is completely changed several times a day. The efficient SUNBEAM Blower and specially adapted motor give you a gentle air movement which is refreshing and enjoyable. The quiet blower and motor combination delivers a large volume of air at low speeds, at lowest cost.

SUMMER COMFORT

Comfort from your SUNBEAM Winter Air Conditioner is not limited to winter months. In summer it may also be used to provide ventilation. Merely turning on the blower at night helps dissipate the heat collected during the day and gently circulates clean, cooler night air.

SPECIFY SUNBEAM QUALITY

The advantages explained above, plus efficient economical heating are the features of SUNBEAM Winter Air Conditioners that contribute so much to better health and greater comfort for your family. You can be sure of carefree heating . . . with greater comfort, efficiency and economy . . . when you select a SUNBEAM Winter Air Conditioner, built and backed by **AMERICAN-Standard**.

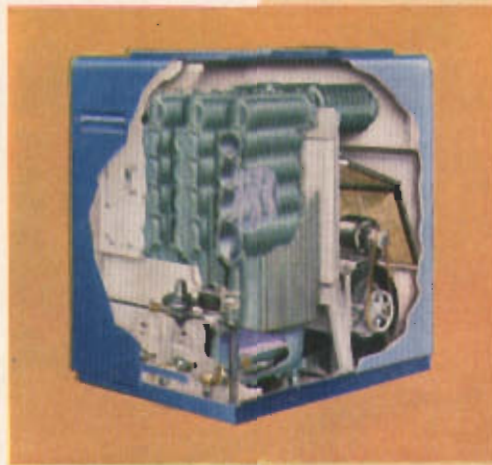


Basement and first floor utility rooms are easily planned around Stubeam Winter Air Conditioners, with their handsome jackets finished in Placid Two-Tone Blue. Unit shown is the Mohawk Gas Fired Winter Air Conditioner.

SUNBEAM GAS FIRED WINTER AIR CONDITIONERS

Banish inconvenience and discomfort in home heating by installing a SUNBEAM Gas Fired Winter Air Conditioner. Automatic gas firing with a SUNBEAM ends furnace-tending chores, provides a constant supply of clean, carefree uniform heat in your home. Automatic humidifiers moisten the air and help to keep it free from the irritating effects of dryness. Efficient filters remove dust, dirt and foreign matter from the air—make housework easier and keep the family healthier. SUNBEAM automatic gas fired products are backed by the best-known name in heating—**AMERICAN-Standard**—yet they cost no more than others. All are approved by American Gas Association.

Above—The Mohawk Winter Air Conditioner, with its distinctive streamlined jacket of Placid Two-Tone Blue, is a modern gas fired unit famous for dependable, automatic operation. Nine sizes meet the heating requirements of any home. Burns natural, manufactured, mixed or liquefied petroleum gas with efficiency and economy. *Cutaway view*, shows the Mohawk's engineering features and rugged construction. Sturdy cast iron heating elements, special ribbon burners, double inlet blowers, rubber mounted motor, and concealed controls add to its efficiency.



Cutaway View
MOHAWK

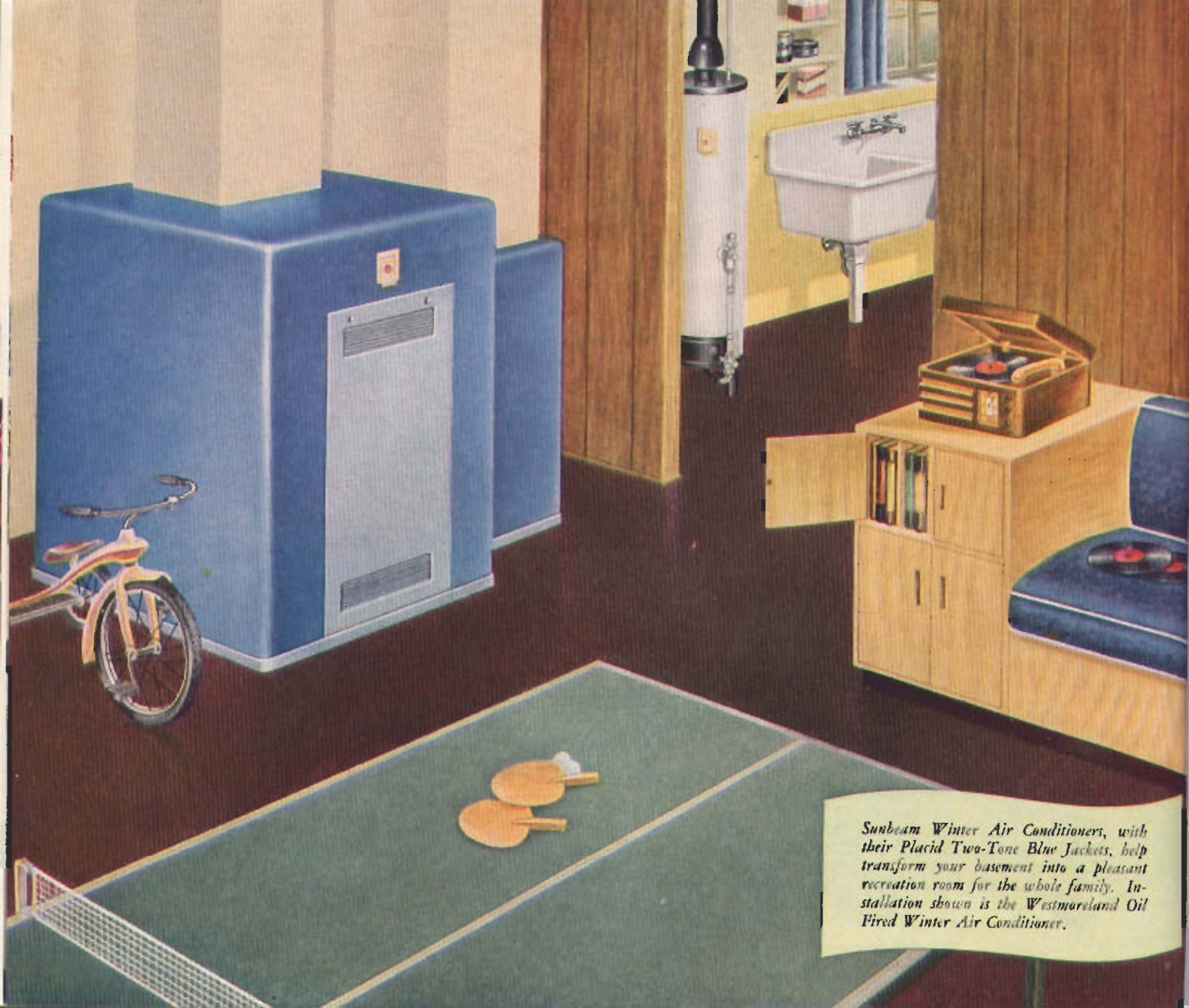
Right—The Chippewa is an efficient, moderately priced automatic gas fired cast iron Winter Air Conditioner, ideal for installation in utility rooms or small basements. Its attractive Placid Two-Tone Blue jacket encloses the same quality construction as the Mohawk . . . cast iron heating element, corrugated ribbon burner, double inlet blower, quiet motor, efficient controls and other features.



MOHAWK



CHIPPEWA



Sunbeam Winter Air Conditioners, with their Placid Two-Tone Blue Jackets, help transform your basement into a pleasant recreation room for the whole family. Installation shown is the Westmoreland Oil Fired Winter Air Conditioner.

SUNBEAM GAS AND OIL FIRED WINTER AIR CONDITIONERS



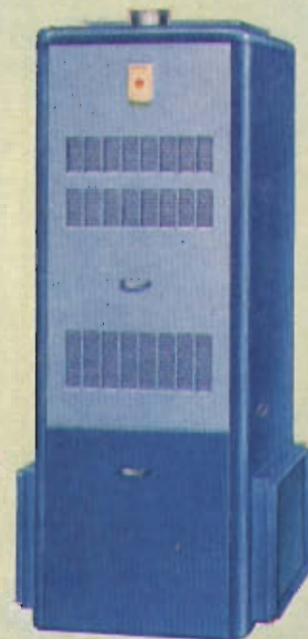
SARATOGA
WINTER AIR CONDITIONER

A compact, specially designed oil fired unit encased in a handsome Placid Two-Tone Blue jacket, the Saratoga provides trouble-free automatic oil heating for small homes. Heating element is of heavy gauge boiler plate steel—riveted and welded for durable, leak-proof construction. Blower-filter unit is an integral part of the heating compartment. Available complete with special model Arcoflame Oil Burner, or for use with any good adaptable burner.



SENECA
WINTER AIR CONDITIONER

Enjoy carefree automatic gas heating with this SUNBEAM unit. The Seneca combines efficiency, quality and attractive appearance at modest price. Durable copper bearing steel heating element, blower, filter and controls are enclosed in an attractive jacket finished in Placid Two-Tone Blue. Burner is made of cast iron, with patented high temperature alloy corrugated ribbons, scientifically designed for economical gas consumption. Available for manufactured, natural, mixed or liquefied petroleum gas. Approved by American Gas Association.



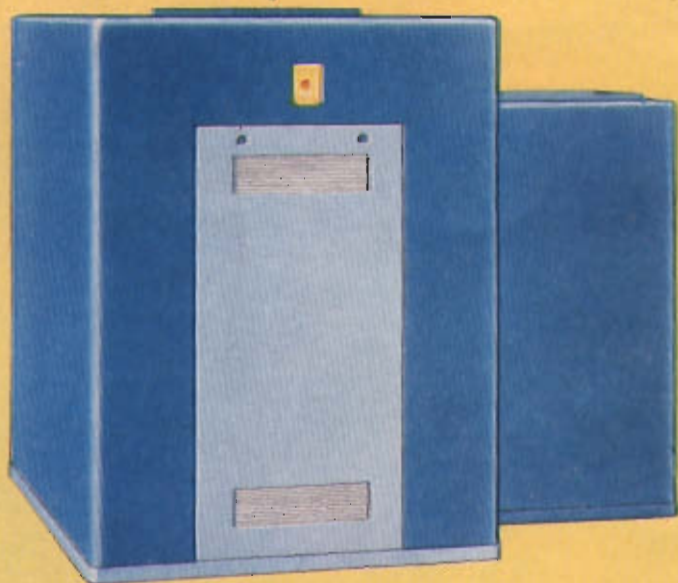
WYANDOTTE
WINTER AIR CONDITIONER

A popular and attractive gas fired unit for small homes, with the same quality features of SUNBEAM construction as the Seneca. The Wyandotte is especially suited to first floor utility room installation, apartments, or small basements. Burns manufactured, natural, mixed or liquefied petroleum gas. Approved by American Gas Association.

SUNBEAM OIL FIRED WINTER AIR CONDITIONERS

The comfort and economy of winter air conditioning are greatly enhanced by the advantages of automatic oil firing. Oil-fired heating with any of the popular SUNBEAM Oil Fired Winter Air Conditioners, is clean, requires no care, no troublesome attention. SUNBEAM Oil Fired Winter Air Conditioners, like the efficient, smartly-styled Westmoreland, at left, permit you to utilize the basement as a pleasant recreation room for the entire family.

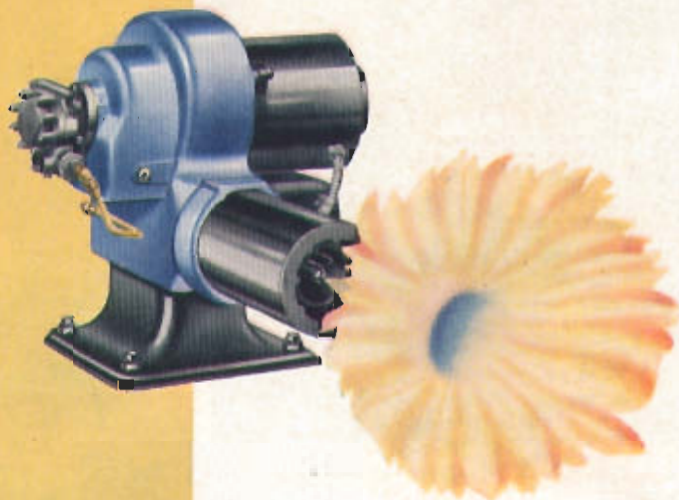
SUNBEAM Winter Air Conditioners circulate refreshing warmth uniformly and gently. Efficient filters remove dust and dirt from the air, leaving it cleaner for better health and lightened housework. Automatic humidifiers help maintain proper moisture for greater comfort.



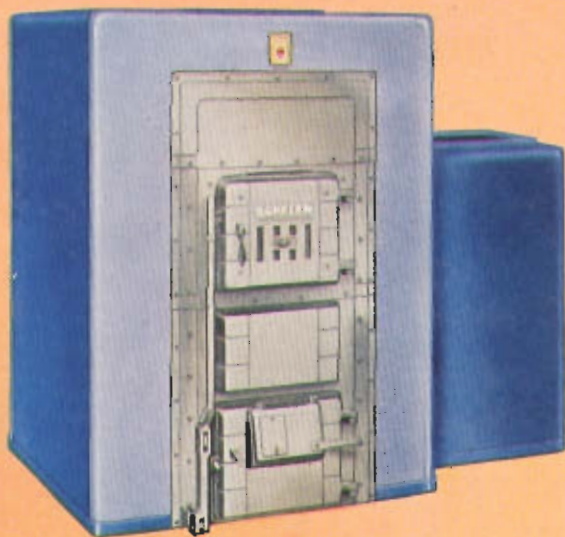
ARCOFLAME OIL BURNER

The Arcoflame Oil Burner illustrated at right is scientifically engineered to perform at high efficiency with SUNBEAM Oil Fired Winter Air Conditioners. It is also ideally suited for converting your present Conditioner or Furnace into an oil fired unit. It offers outstanding features—a sturdily built, quiet motor; smooth running fan; the exclusive Flo-Stat, which regulates and controls the oil flow; the Arco-Mute Tube, a unique small bore steel tube which carries the correct amount of oil to the nozzle; the Turbometer, which produces the hot, clean sunflower flame; all contributing to perfect, economical combustion. The Arcoflame burns low cost No. 2 or 3 fuel oil, and meets every requirement for good, dependable service. Approved by Underwriters' Laboratories.

While the use of the Arcoflame Oil Burner is recommended, all SUNBEAM Oil Fired Winter Air Conditioners operate efficiently with any adaptable burner.

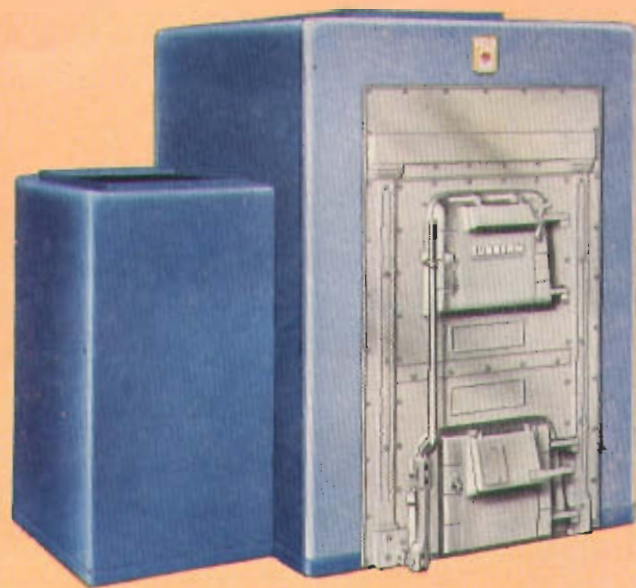


SUNBEAM COAL FIRED WINTER AIR CONDITIONERS



**ALLERTON
WINTER AIR CONDITIONER**

Made of sturdy boiler plate steel, it offers comforting warmth all winter long—plus greater convenience than most hand fired units. Large radiator provides more heating surface and added efficiency and economy . . . equipped with "V" baffle to insure uniform heating of radiator by hot gases before they pass up the flue. Deep fire box permits longer firing periods, requires less attention. Duplex grate is free moving and easy to shake. Attractively jacketed to dress up the basement. Also available for oil and stoker firing.

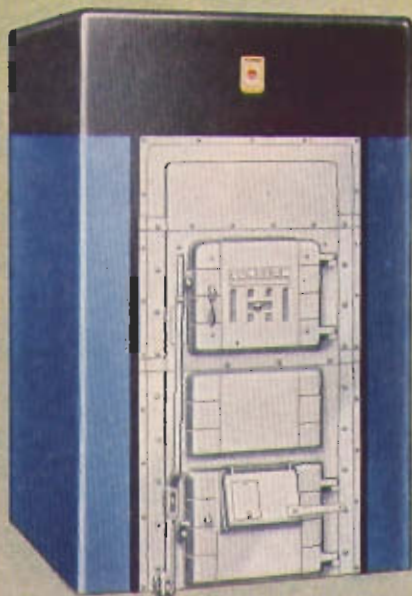


CLIFFDALE WINTER AIR CONDITIONER

A highly dependable and efficient unit adapted for larger homes and buildings. Expert engineering contributes design features that make the Cliffdale outstanding for providing the healthful comfort of winter air conditioning with utmost economy. These include the heavy gauge steel heating element, with its ample radiator, riveted and welded for long life and leak-proof construction. A deep firebox means less frequent firing and better combustion; an advanced type of grate—the duplex—assures easy removal of ashes and clinkers; the jointless ash pit prevents escape of dust or fumes into warm air chamber.

The Cliffdale is attractively finished in Placid Two-Tone Blue. It is also well adapted for oil or stoker firing and performs with high efficiency and economy with either method.

SUNBEAM WARM AIR FURNACES



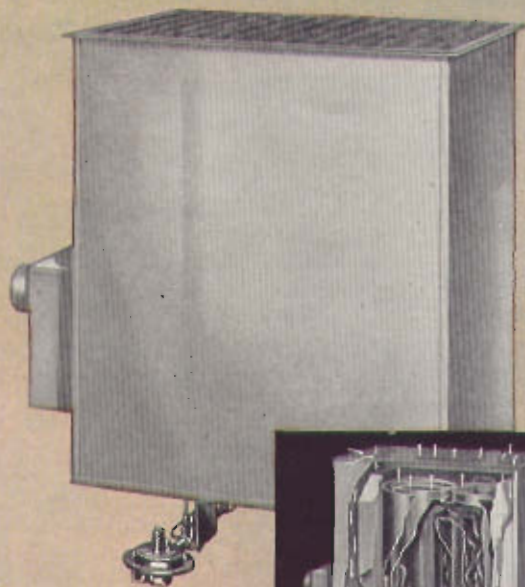
**ARLINGTON "SQUARE"
DELUXE STEEL FURNACE**

Has special appeal where both attractive appearance and efficiency are desired. It has the same heating element, large radiator and other construction advantages that make the conventional Arlington round furnace outstanding for good economical heating. Colorful jacket is finished in dark Placid Blue and Black. Burns coal (hand fired or stoker) or oil.



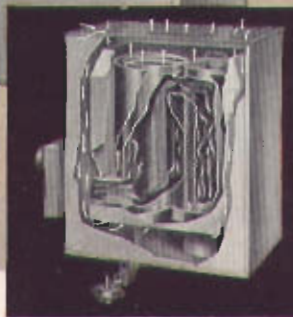
**SHAWNEE GAS FIRED
WARM AIR FURNACE**

Completely automatic gas fired unit, priced to fit the snug budget. Handsomely jacketed. Copper bearing steel heating element, thermostatic controls, safety pilot and other features combine for top efficiency, economy and durability. Available in five sizes, for manufactured, mixed, natural or liquefied petroleum gas. Approved by American Gas Association.



**SAGINAW GAS FIRED
FLOOR FURNACE**

Provides economical warmth in small and medium sized homes, with or without basements. Expertly designed combustion chamber and radiator, welded leak-proof joints and other features assure quick, dependable heating. Automatic controls, if desired. Four sizes for various types of gas.



GRAVITY WARM AIR HEATING

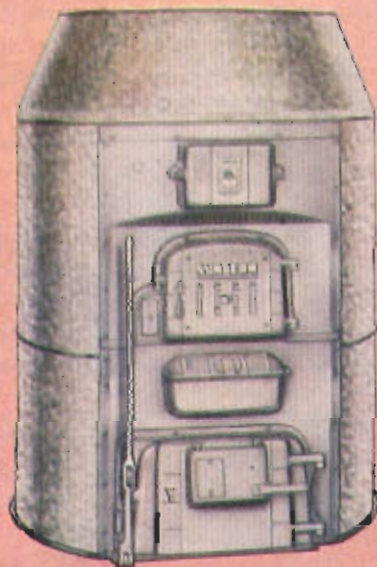
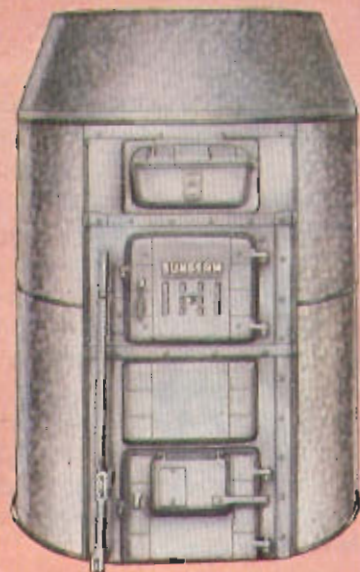
Gravity Warm Air Heating is a dependable method of providing comfort at moderate initial cost and with minimum upkeep. The warmth supplied is mild, clean, and refreshing. The ideal installation consists of a **SUNBEAM** Furnace in the basement with ducts leading from the furnace bonnet to registers in the rooms to be warmed. As air is heated in the furnace, it circulates through ducts to the registers located in the rooms to be heated. Pipeless and floor type furnaces have one large bonnet outlet which leads directly from the heating unit to the register, which is centrally located in the home to be heated.

The name **SUNBEAM** is associated only with quality products backed by **AMERICAN-STANDARD**. It is your assurance of modern design and solid construction that means better heating and low fuel consumption, as well as long trouble-free service.

The complete **SUNBEAM** line includes cast iron and steel furnaces, in pipe, pipeless, room and floor models, to meet the requirements of virtually any size or kind of home. Attractive square jackets are available on some patterns. There are **SUNBEAM** Furnaces adapted for any fuel—coal (hand fired or stoker), oil or gas. Some of the popular units are illustrated and described on these pages.

The Arlington, illustrated at upper right, is a quality steel furnace that performs efficiently and with a high degree of satisfaction with coal (hand fired or stoker), or oil firing. Its heavy steel heating element and big radiator offer more air heating surface than the average furnace; consequently a larger volume of air is heated in a given time, less fuel is burned and quicker circulation of heat results. Besides this fuel-saving efficiency, the tight, leak-proof joints, solid construction, full height fire pot and duplex grates assure cleaner heat, greater durability, and minimum caretaking attention when hand fired. Four popular sizes meet requirements of most homes.

The Kenwood (illustrated lower right) is a quality product made of cast iron for utmost durability. It is designed on correct, scientific principles, with a generous one-piece radiator, carefully proportioned two-piece fire pot, large air heating surface, deeply cupped joints, duplex grates, and other features that make it unequalled for dependable, low cost heating. The Kenwood burns coal, hand fired, with minimum firing attention, and it is made in pipe, pipeless and room heater types. It comes in six sizes, to heat the average small to medium size home.

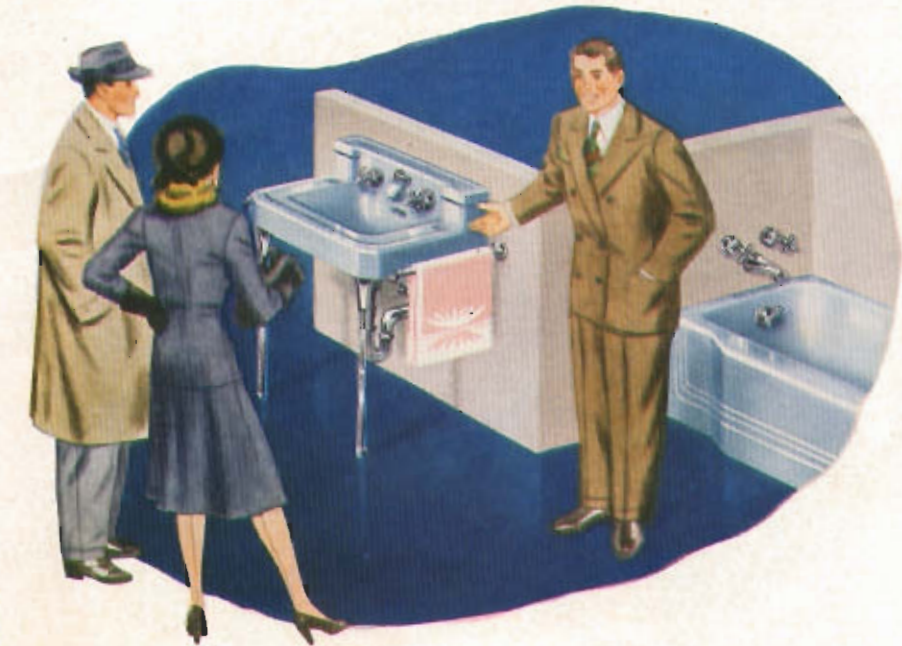


Planning the Bathroom

Planning a bathroom is fun. And important, too. The excitement of remodeling or the thrill of creating a new bathroom usually comes only once or twice in a lifetime, and it is important enough to warrant careful and thoughtful planning. The principal point to remember is to make **AMERICAN-STANDARD** Plumbing Fixtures the nucleus of your planning. Then you will have no cause to wonder whether you have made the right selection—you can devote all of your efforts toward perfecting the rest of the room with the assurance that the plumbing fixtures are right.

One of the first things to consider in planning your bathroom is the proper selection of color. The effect you wish to create governs your color scheme. Color can and should suggest formality, simplicity or elegance . . . or express the tempo of your home life. You can choose cool, refreshing blues and greens for southern exposures or warm colors that best fit the northerly exposures. And you can tie in the motif of connecting rooms, selecting colors in close harmony or pleasing contrast with adjacent rooms or halls.

Proper selection of quality plumbing



fixtures and a good arrangement are often more important than cost. Plan a bathroom that is as large or "roomy" as possible. While the right fixtures will endure for years, the needs of your family may change so that the future will find you wanting not a newer but a

larger bathroom. Plan your bathroom carefully, for simplicity and utility. Then add the individual touches you desire.

Consider wisely the "extras" that appeal to you . . . such as storage and linen closets where and as you want them . . . or an extra lavatory, or dressing table . . .

THE AMERICAN-Standard WAY...

a separate bath and shower or the two combined . . . special drying space . . . and all the ideas you've been saving for your dream bathroom.



FOR A PERFECT BATHROOM... CHOOSE AMERICAN-Standard

AMERICAN-Standard designers have proved that efficient modern sanitation, long wear, and beauty in form, color and texture could be combined in fine plumbing fixtures . . . and still have them cost no more than others. The complete line of AMERICAN-Standard Plumbing Fixtures offers a wide selection of exclusive models, in white or a variety of exquisite colors, and many different sizes to fill the most exact needs. You'll compare color with color . . . weigh style against style . . . and you'll be sure of the perfect, permanent satisfaction that results from a wise choice of performance-proved quality products.

Consider, too, the type of heating for the room. If radiator heating is used to heat the home, an increasingly popular installation in the modern bathroom is an AMERICAN Sunrad Radiator, Peerless Bathroom Radiator, or an Arco Convector, completely or partially recessed, wall-hung, or free-standing, to suit individual tastes.

Consult your Heating and Plumbing Contractor about installation and the advantages of one fixture over another. He will help you select the best in bath-



room fixtures and fittings, just as he recommends products to complete your kitchen, powder room, basement, laundry or utility room to your lasting satis-

faction, health and comfort. For professional approval, you can take your ideas to your Architect.

And planning done, when your bathroom is completed—luxurious in white or your favorite of many exquisite colors, with the lasting glossy texture found only in AMERICAN-Standard Plumbing Fixtures—the continued approval of friends and family alike will keep you forever proud of the bathroom you planned . . . the AMERICAN-Standard way.

COLORFUL ACCESSORIES...TO "DRESS UP" THE COMPLETED BATHROOM

You can easily project the pleasure of bathroom planning into many novel and distinctive changes in color and effect without touching fixtures, walls or basic decorating scheme. An ever changing bathroom that is constantly fresh adds interest with a minimum of expense. You can achieve this effect by careful planning of accessories . . . drapes, shower curtains, rugs, seat covers . . . and the like. Different sets of these fabrics, contrasting or harmonizing with walls or fixtures, will transform the bathroom from time to time to keep it sparkling and colorful, adding fresh emphasis to the lustrous beauty of AMERICAN-Standard Plumbing Fixtures.

A vintage-style illustration of a man with short, dark hair, wearing a brown suit jacket, a white shirt, and a green tie. He is smiling slightly and holding a black telephone receiver to his ear with his right hand. The background is a solid yellow color.

Call YOUR MASTER PLUMBER
AND HEATING CONTRACTOR

Call your Master Plumber and Heating Contractor today for further information about AMERICAN-Standard Heating Equipment and Plumbing Fixtures. He is a member of your community and a man you can rely on for sincere help with your heating and plumbing problems.

Because of his knowledge, ability, and experience, he can assist you in choosing the right products for your home and budget. And most important, he can assure proper installation to guard the health and comfort of your whole family.

AMERICAN RADIATOR & STANDARD SANITARY CORPORATION
PITTSBURGH 30, PA.

AMERICAN-Standard

HEATING  PLUMBING

Serving the Nation's Health and Comfort

DWIGHT TOAL

South Main Street, Batavia, New York

Phone 1901 W 1