

# PRODUCT PREVIEW

**PRODUCT CATEGORIES (CLICK TO JUMP TO SECTION)**

AC & Refrigeration Equip., Systems, Components & Products.... 1-12  
 Heating Equipment (Boilers, Burners, Exchangers, etc.)..... 13-16  
 Ventilation Equipment (Fans, Blowers, Diffusers, etc.)..... 17-19  
 Instruments & Controls ..... 20-21  
 Building Automation & Control Products ..... 22-24

Energy-Saving/Renewable Energy Equipment ..... 24-25  
 IAQ Products (Filters, Humidifiers, etc.)..... 25-26  
 Plumbing Products ..... 26-27  
 Software ..... 28  
 Tools & Contractor Supplies.....29-30  
 Miscellaneous Products..... 31-32

## AIR-CONDITIONING & REFRIGERATION EQUIPMENT, SYSTEMS, COMPONENTS & PRODUCTS

### Activated Carbon Filter

**3AC Co., Ltd.** / BOOTH N12006

3AC Co., Ltd. offers a self-developed activated carbon/catalyst filter that removes fine dust, fungus and viruses larger than 0.3um (PM 2.5 greater than 99.99%) and removes various odors and harmful gases, including VOC, NOx, and SOx.

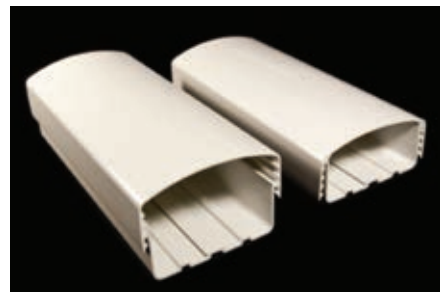
MARKETS: Residential

### Line Set Cover

**AC Guard Inc.** / BOOTH N7519

AC Guard Inc.'s line set covers are adjustable, which eliminates distributors having to stock multiple size fittings and ducts, lowering inventory cost and creating more inventory turns. Contractors can stock and have the right size available every time.

MARKETS: Residential, Commercial



**Cover Guard**  
AC Guard Inc.

### Titanium Chiller Barrel and Condenser

**ACL Machine Inc. - S & W Wilson Ent., Inc.**  
BOOTH N8538

ACL offers a Titanium Sea Water Chiller Barrel and Condenser for Ships. Titanium stands for forever and high quality. They have standard sizes with cooling capacities ranging from 1/3 ton to 40 tons. In addition, they can custom build the chiller to fit your specific needs.

MARKETS: Residential, Commercial, Institutional, Industrial



**Titanium Chiller Barrel/CLBS20**  
ACL Machine Inc. - S & W Wilson Ent., Inc.

### Semi-Custom Package System

**Addison** / BOOTH C2906

The Addison PR product line is an innovative and flexible semi-custom packaged system. The PR is the only system that allows you to pair one of six different condensers with refrigeration components, resulting in over one thousand different refrigeration combinations selected based upon ambient temperature range(75F-125F), energy or performance requirements. It also includes a mechanical offset when there is an exhaust air stream available and two million different combinations from 3-70 tons.

MARKETS: Commercial, Institutional, Industrial

### Refrigerant

**Airgas Refrigerants, an Air Liquide Company** / BOOTH C1939

Airgas Refrigerants, an Air Liquide Company, is your trusted nationwide refrigerant supplier and EPA Certified Reclaimer. Airgas offers free, next day delivery on popular and hard to find refrigerants. They feature analysis, high buy-back prices and on and off-site reclamation using their patented technology.

MARKETS: Residential, Commercial, Institutional, Industrial

### Microchannel Heat Exchanger

**Alcoil** / BOOTH N8438

Alcoil replacement coils are designed as an upgrade to the original manufacturer's heat exchangers. Replacement Coils from Alcoil are upgraded using thicker materials and E-Coating to assure extended service life. As a primary supplier to major HVAC/R OEM's, Alcoil is a leader in the industry in microchannel coil design, quality and customer service.

MARKETS: Residential, Commercial, Institutional, Industrial

### Die-Stamped Round Fitting

**American HVAC Mfg., Inc.** / BOOTH C4949

Saddle Taps are used to branch off from main trunk of duct-work in lieu of using Tee. The advantages of using Saddle Taps are that they are able to be mounted both before and after installation is complete, as well as being one-piece stamped with long collars to facilitate attaching self-sealing gaskets. They are high quality products at a low cost.

MARKETS: Commercial, Institutional, Industrial



**Saddle Tap**  
American HVAC Mfg., Inc.

### Low Pressure Sensor

**Amphenol Advanced Sensors**  
BOOTH C1480

NovaSensor announces the extension of the NPA product line to cover the very low pressure ranges of 2 H2O (500 Pa) and 5 H2O (1250 Pa). NovaSensor has designed and incorporated an optimized silicon-micro machined pressure-sensing element to give superior performance for particularly challenging applications, such as HVAC, Respiratory Monitoring and Control, filter monitoring and flow monitoring.

MARKETS: Residential, Commercial, Institutional, Industrial

Looking for a specific  
type of product?  
Search over 250  
Product Categories  
at [ahrexpo.com](http://ahrexpo.com)

AIR-CONDITIONING & REFRIGERATION EQUIPMENT, SYSTEMS, COMPONENTS & PRODUCTS



**RYDLYME Descaler**  
Apex Engineering Products Corporation

## Biodegradable Descaler

**Apex Engineering Products Corporation**  
BOOTH C2646

For more than 70 years, RYDLYME biodegradable descaler has been used to safely and efficiently dissolve tough mineral deposits, such as water scale, lime scale, calcium, rust and even struvite. This descaler is fortified with a complex formula of wetting and penetrating agents that dissolve mineral deposits into the solution for quick and easy disposal.

*MARKETS: Residential, Commercial, Institutional, Industrial*

## HVAC Linear Bar Grille

**Architectural Grille, Div. of Giumenta Corp.** / BOOTH C2434

Architectural Grille's linear bar grille features flush, borderless installation for plaster and drywall applications, is ideal for wall and/or ceiling application, creates a smooth seamless clean look and has pre-punched fastening points for quick installation with standard drywall screws. Available options include mitered corners, custom spacing between bars and two methods of fastening.

*MARKETS: Residential, Commercial, Institutional, Industrial*



**HVAC Linear Bar Grille J Frame**  
Architectural Grille, Div. of Giumenta Corp.

## Scroll Modular Chiller

**ArctiChill** / BOOTH N7717

ArctiChill offers an air-cooled modular chiller with enhancements, including all variable speed scroll compressors and heat recovery heat exchanger on skid with 3-way valve, which is actuated when conditions are favorable, and Adiabatic assisted condenser coils.

*MARKETS: Commercial, Institutional, Industrial*

## Pipe Insulation

**Armacell LLC** / BOOTH C4710

New large ID AP Armaflex<sup>®</sup> pipe insulation eliminates the need to piece sheet material around large eight and 10 piping. Save time with easier-to-install tubes, which fit snugly over large pipes and glue together faster than flat insulation, with no waste or scrap.

*MARKETS: Commercial, Institutional, Industrial*

## Humidifier

**Armstrong International** / BOOTH C4318

For higher humidification outputs when steam is not available, there is no better option than Gas-Fired Humidification. Engineered to be more compact, while still utilizing Ionic Bed Technology, the new GFH Series features high output capacity, while still delivering precise control and accuracy using the Armstrong Control Technology (ACT) software.

*MARKETS: Institutional, Industrial*



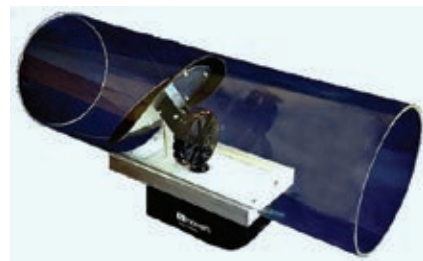
**GFH Series Humidifier**  
Armstrong International

## Zoning System

**Arzel Zoning Technology, Inc.**  
BOOTH N7830

Arzel Zoning Technology, Inc. introduces Haven, the world's first completely wireless, energy harvesting zoning system. This system reduces installation time by 50%, eliminating the need to run wires and tubing to dampers or thermostats. Controlled/programmed by contractor and consumer apps, Haven makes scheduling follow up appointments easy, providing additional revenue opportunities for the contractor.

*MARKETS: Residential, Commercial*



**Haven Zoning System**  
Arzel Zoning Technology, Inc.

## Leak Stop Liquid

**Atlantic Chemical & Equipment Co.**  
BOOTH C3545

Atlantic Chemical introduces a new simple-to-use, cost effective alternative to high priced pre-filled HVACR leak sealants. ACE<sup>®</sup> EZ LEAK-STOP LIQUID is now available as a pourable liquid, which can easily be measured into a standard oil injector and quickly injected into the system, in the same way contractors usually add oil, dyes or other additives and is supplied in an 8 oz. metered bottle. Leak Sealant can be measured out in 1/4 oz. doses, thereby allowing a contractor to easily adjust dosage to unit size. Recommended dosage is 1 oz. per 3 tons. It does not react to air or moisture, permanently seals microscopic leaks in A/C refrigeration systems and reduces compressor noise and extends compressor life, as well as protecting against future corrosion and leaks.

*MARKETS: Residential, Commercial*

## Packaged Wine Cellar Cooling System

**Bacchus Cellar Systems** / BOOTH N7200

The Bacchus Cellar Systems wall mount packaged unit cools and humidifies any wine cellar up to 1000 cubic feet. Fabricated from 316SS, this cooler has a digital microprocessor and display and sits completely outside the cellar. User needs only a supply and return grille in the cellar.

*MARKETS: Residential, Commercial*

**BCSWM Cellar Cooler**  
Bacchus Cellar Systems



## Refrigeration Detection Monitor

**Bacharach, Inc.** / BOOTH C1717

The MVR 300 area monitor is specifically designed to provide continuous monitoring for refrigerant leaks from VRF/VRV (Variable Refrigerant Flow/Variable Refrigerant Volume) systems. The MVR 300 audible and visual alarms alert occupants and simultaneously communicate to Building Management Systems/Building Automation Systems (BMS/BAS). Two on-board relays can be used to close valves, activate alarm devices and exhaust fans or initiate emergency calls to rescue teams. The on-board Modbus RTU interface provides real-time information about concentrations, status and settings. It also enables custom configuration of the MVR 300 to any application specific requirements using multiple Modbus registers and is designed for easy installation and simple maintenance.

*MARKETS: Commercial, Institutional, Industrial*

## Wall-Mount Air Conditioner

**Bard Manufacturing Company, Inc.**  
BOOTH C3518

The MULTI-TEC Wall-Mount air conditioner utilizes PLC (Programmable Logic Control) technology to allow multiple units to operate connected to a single LC6000 controller. When installed with an optional 100% free cooling economizer, the unit will supply full-rated airflow in free cooling mode with the ability to exhaust unconditioned indoor air, without the need for additional relief openings in the structure.

*MARKETS: Commercial, Industrial*



**MULTI-TEC Air Conditioner**  
Bard Manufacturing Company, Inc.

## Screw Compressor

**BITZER US, Inc.** / BOOTH N9930

BITZER's CSVH Screw Compressor with integrated drive is now UL approved for the US. Imagine a positive displacement screw compressor with integrated VFD that rivals the IPLV performance of complex, oil-less centrifugal compressors. BITZER's CSVH series now has UL for the US market and is available in 125HP (25 - 100%), 160HP (20 - 100%) and 200HP (16 - 100%) sizes. The inverter is cooled by a cold plate to ensure high performance under any conditions. Standard features include a soft-start function, integrated monitoring with warning and alarm functions and a Modbus communication port to the system controller.

*MARKETS: Commercial*



**CSVH Screw Compressor**  
BITZER US, Inc.

AIR-CONDITIONING & REFRIGERATION EQUIPMENT, SYSTEMS, COMPONENTS & PRODUCTS

## Heat Exchanger

**Blissfield Manufacturing Co.**  
BOOTH C3531

Blissfield's Spiral Fin gas cooler and condenser solutions feature small tube diameters ideal for CO<sub>2</sub>, Propane and other refrigerants. All steel continuous tube construction with compact tube pattern for optimal performance and limitless bend geometries. High pressure rated copper connectors are available. They are designed for beverage applications and suitable for commercial refrigeration equipment.

MARKETS: Residential, Commercial



**Spiral Fin Condenser**  
Blissfield Manufacturing Co.

## Heat Pump

**Bulldog Heat Pump Systems**  
BOOTH N7400

The Bulldog Heat Pump System reduces electrical energy, since the compressors are not required for the heating mode. The result can be a reduction in heating cost of 30% to 70%. Electrical energy is also reduced in the cooling mode, due to an optimized refrigeration system.

MARKETS: Commercial, Institutional, Industrial



**Vertical Stack InnKeeper IKV**  
Bulldog Heat Pump Systems

## Thermal Energy Storage

**CALMAC Manufacturing Corporation**  
BOOTH C1016

IceBank<sup>®</sup> Energy Storage reduces expensive on-peak energy usage and emissions caused by air-conditioning. Energy Storage increases viability of sporadic renewable energy resources, such as wind and solar, which helps with net zero design.

MARKETS: Commercial, Institutional, Industrial



**IceBank Energy Storage**  
CALMAC Manufacturing Corporation

## Custom Air Handling Units

**Buffalo Air Handling** / BOOTH C2015

Buffalo Air Handling's custom air handling systems, which address specific project requirements, are ETL rated and IBC certified with AMCA, ARI and UL rated components. They offer all aluminum construction with injected foam panels, multiple fans, IAQ drain pans, factory testing, stacked units, KD construction, SolidWorks, Revit and BIM design.

MARKETS: Commercial, Institutional, Industrial



**BB Air Handling Units**  
Buffalo Air Handling

## HVAC Coil

**Capital Coil & Air** / BOOTH C6012

Capital Coil's Divided Coils are the ideal solution for replacement applications where there is limited access for installation of a full-length coil. This feature allows for shipping the coils in specified lengths that will fit into limited-access areas. The coils are manufactured with heavy steel endplates that are bolted together in the field, and the gasket insures leak-free installation. Close proximity of the endplates to the fin pack allow for maximum fin length on the installed coil.

MARKETS: Commercial, Institutional, Industrial



**Divided Coil**  
Capital Coil & Air

## Scroll Compressor Soft Starter

**Carlo Gavazzi Inc.** / BOOTH C1467

1- and 3-Phase Soft Starts feature an auto-adaptive algorithm and control/integrated bypass relays, which start HVAC scroll compressors rated up to 75Hp (95AAC). They reduce starting current by up to 50%, thus increasing compressor efficiency by 10 to 15% and eliminating light flickering, reducing voltage disturbances and increasing compressor lifetime.

MARKETS: Residential, Commercial, Institutional, Industrial

## Semi-Hermetic Compressor

**Carlyle Compressor** / BOOTH C2706

Carlyle SMART unloading compressors and accessories deliver precise, tighter control and reduce start-stop cycling. Carlyle's family of SMART products applied on their O6D, O6E, and O6M compressors provide greater control, efficiency and reliability over a range of applications. Together, they have the capabilities to help make the entire system smarter.

MARKETS: Commercial, Institutional, Industrial



**O6D, O6E, O6M Compressors**  
Carlyle Compressor

## VRF Heat Recovery, Single Phase Outdoor Unit

**Carrier** / BOOTH C1510

Carrier brings heat recovery energy efficiency to the single-phase market with an IEER of 28.4 and SCHE of 36.6 (both non-ducted values).

The 6-ton SHRM-e MMY-MAP unit can connect to 12 indoor units of various styles and be twinned to have a capacity of 12-tons and up to 25 indoor units.

MARKETS: Residential, Commercial



**MMY-MAP0726FT2P-UL/SHRM-e Series Outdoor Units**  
Carrier

## Hose Assemblies/Kit

**Chamberlin Rubber Company, Inc.**  
BOOTH N8620

Chamberlin Rubber Co. offers new push-to-connect fittings on their Chamflex hose. It is the same class A fire rated hose with a quick hook up. It's ideal for the chilled beam market, and no tools are required. Many other applications apply.

MARKETS: Commercial, Institutional, Industrial

## Heat Transfer Coil

**Coilmaster Corporation** / BOOTH N10331

Coilmaster Corporation is now offering Stainless Steel HVAC coils in a wide range of configurations and sizes for use in corrosive environments. These coils may be fabricated with either 304L or 316L stainless steel tubes. The fins materials available include like grade stainless steel, aluminum or copper. All coils are custom-built to fit your specific application.

MARKETS: Commercial, Institutional, Industrial



**Stainless Steel Coil**  
Coilmaster Corporation

## Press Fitting for Refrigeration

**Conex Universal Ltd.** / BOOTH C6917

MaxiPro is an easy-to-fit press fitting suitable for the demands of high-pressure refrigeration and air conditioning applications.

MARKETS: Commercial, Industrial

## Submersible Solids Handling Pump

**Crane Pumps & Systems** / BOOTH C3910

Crane Pumps & Systems has expanded its Deming Demersible 7365 Series Pumps with the addition of the #5 Frame. The series includes 3, 4, 6, 8, and 10 discharge sizes, with motors ranging from 2 -150 HP, and handles flows up to 4,000 GPM and heads over 240 feet.

MARKETS: Residential, Commercial, Institutional, Industrial



**Deming Demersible 7365 Series #5 Frame Solids Handling Pump**  
Crane Pumps & Systems

AIR-CONDITIONING & REFRIGERATION EQUIPMENT, SYSTEMS, COMPONENTS & PRODUCTS



**Intelligent Equipment<sup>®</sup> Control System**  
Daikin Applied

## HVAC Control System

**Daikin Applied** / BOOTH C2509

Building owners and managers need better visibility to their HVAC unit performance. Daikin's Intelligent Equipment connects directly to your HVAC unit to monitor energy consumption at the equipment level, for a more accurate performance measurement. This solution gives you the freedom and control to monitor and manage your equipment.

MARKETS: Commercial, Institutional, Industrial

## VRV Dedicated Outdoor Air System (DOAS)

**Daikin** / BOOTH C2509

Daikin's new VRV Dedicated Outside Air System (DOAS) consists of an air handler that integrates seamlessly with a Daikin VRV system to provide 100% outside air. Options such as gas heating, reheat and energy recovery allow for installation in many applications in cold, hot or humid climates.

MARKETS: Commercial, Institutional, Industrial



**VRV Dedicated Outdoor Air System**  
Daikin

## Indoor Dehumidifier

**Dectron Internationale Inc.** / BOOTH C3721

Dectron Internationale's condenser rejects compressor heat to the outdoors, while cold dehumidified air from evaporator is supplied to the room. It has a lower initial installation cost, no remote outdoor condenser is required, and has increased energy efficiency and lower head pressure. The condenser has a compact footprint, perfect pool retrofit, offers indoor or outdoor installation and is built to last.

MARKETS: Residential, Commercial, Institutional

## Cooling Tower

**Delta Cooling Towers, Inc.** / BOOTH N7406

Delta Cooling Towers introduces their new Anti-Microbial (AM) Cooling Tower. Their tower displays the only anti-microbial activity against Legionella bacteria out of all the common cooling tower casing materials. They're manufactured with anti-microbial resin, which is fully compounded into base cooling tower plastic. They offer a 20-Year Warranty and are made in the US.

MARKETS: Residential, Commercial, Institutional, Industrial



**Delta Anti-Microbial Cooling Tower**  
Delta Cooling Towers, Inc

## Condensation Trap

**Des Champs Technologies** / BOOTH N11812

Des Champ Technologies' new invention, designated as RLC Air-Trap, uses air pressure generated by the air moving devices within the HVAC equipment to prevent unwanted airflow in or out of the unit via the drain lines. It uses air pressure to trap airflow instead of water. The RLC Air-Trap is designed for both positive and negative plenum pressure systems.

MARKETS: Residential, Commercial, Industrial

## Sprayable Duct Sealant

**Design Polymeric** / BOOTH C3443

Design Polymeric's DP 1010 Spray is a Zero VOC, UL 181 listed, water-based, sprayable duct sealant for commercial and residential application. It is formulated to eliminate running, dripping and splattering. It is also mold and mildew resistant, is recommended to +/- 15 inches water gauge and meets all SMACNA seal class requirements.

MARKETS: Residential, Commercial, Institutional, Industrial

## Cable Suspension

**Doby Verrolec** / BOOTH C5244

The DobyGrip SpaceSaver allows for the suspension of ductwork (and other MEP services) in spaces where installation height is restricted. It allows the cable lock to be positioned tight against the top of the duct, reducing the minimum height required to install the duct by 50%.

MARKETS: Commercial, Institutional, Industrial



**DobyGrip SpaceSaver**  
Doby Verrolec

## Electronic Expansion Valve and Controller Kit

**DunAn Microstaq (DMQ)** / BOOTH N9531

With a fast responding refrigerant expansion valve, DMQ's MEMS technology for precise superheat control now extends from one to 22 tons cooling capacity. The kit includes a USHC controller with preprogrammed refrigerant, electronically controlled HC-MSEV valve, external thermistor and wiring harness. It is a direct replacement for a TXV, for overall improved refrigeration system performance.

MARKETS: Commercial, Institutional, Industrial



**High Capacity Modular Silicon Expansion Valve (HC-MSEV) Kit**  
DunAn Microstaq (DMQ)

## Adjustable Frequency Drive

**Eaton** / BOOTH C2524

The new HVAC assembly package includes the Eaton H-Max series adjustable frequency drive, with various disconnects and bypass options, in a compact assembly. The revamped design utilizes Eaton XT series contactors and has options to enable the user to run the unit in bypass with the AFD removed. The product boasts a fully featured electronic bypass standard with easily integrated mechanical bypass optional. Eaton's Active Energy Control, which provides out-of-the-box energy efficiency, is 65 kAIC rated, available in NEMA 1, 12 and 3R enclosures and is UL 508C listed as an assembly.

MARKETS: Commercial

## Linesets and Fittings for AC Lines

**Ebrille SRL** / BOOTH N11209

Ebrilsplit Linesets and Ebrilsmart stand for the right and reliable solution when it comes to performing installations of A/C units.

MARKETS: Residential

## Electronically Commutated (EC) Motor

**EC Fans & Drives** / BOOTH N7012

EC Fans & Drives' new EXRi50 motor is a groundbreaking electronically commutated (EC) motor focused for use in the commercial refrigeration and small HVAC markets. It comes with multiple fixing options to suit both sectors and is a global voltage, single speed, single direction EC motor with class-leading efficiency.

MARKETS: Commercial



**EXRi50 Motor**  
EC Fans & Drives

## Thermostat

**ecobee** / BOOTH C1553

Ordinary thermostats read the temperature in one room (usually the hallway), which can make your favorite rooms uncomfortable. That's why ecobee created ecobee3. It works with remote sensors to deliver the right temperature in the rooms that matter most. It works with Homekit and Echo; you can now enjoy hands-free control of your home comfort, all with a single voice command.

MARKETS: Residential

AIR-CONDITIONING & REFRIGERATION EQUIPMENT, SYSTEMS, COMPONENTS & PRODUCTS

## Pre-Charged Refrigeration System

**Embraco North America, Inc.**  
BOOTH C4534

The Embraco Plug n' Cool, a new concept in refrigeration, is a complete cooling solution available for reach-in freezers and refrigerators in supermarkets, convenience stores and professional kitchens. Plug n' Cool is in accordance with the EPA F-gas regulation and allows OEMs to reach energy efficiency levels required by the DOE, as well as being compliant with the EPA GreenChill program. It also provides retail businesses with several other benefits, as its modular concept offers flexibility for store layout and its self-contained water-cooled concept does not require a machine room, providing more internal space for food retailers.

MARKETS: Commercial



**Plug n' Cool Refrigeration System**  
Embraco North America, Inc.

## Evaporative/Adiabatic Pre-Cooler

**EPS Products Inc.** / BOOTH C5349

EcoMESH is a unique mesh and water spray system that improves the performance of Air Cooled Chillers, Dry Coolers and Refrigeration plants, while reducing energy consumption by up to 30%. EcoMESH has been fitted to troublesome units worldwide, where its water spray technology eliminates problems, as well as being virtually maintenance free.

MARKETS: Residential, Commercial, Industrial

## Reconditioning Additive

**Errecom s.r.l.** / BOOTH N7435

Compressor+ is the additive that restores the optimal AC/R system's working conditions once the compressor is replaced or the circuit flushed. This process gives life to different contaminants. Compressor+ precisely neutralizes and incorporates all these dangerous components, and immediately guarantees the maximum efficiency by eliminating the possibility of future damage.

MARKETS: Residential, Commercial, Institutional, Industrial

## Condensing Unit Cover

**ESP Company** / BOOTH N7200

ESP Company's 4'x4'x4' net protects an outdoor condensing unit from falling leaves and debris and can be used all year long. Its 1/4 mesh will even keep out cottonwood seeds in some US territories.

MARKETS: Residential, Commercial



**ECO Closed Circuit Coolers**  
EVAPCO, Inc.

## Evaporative Cooling Equipment

**EVAPCO, Inc.** / BOOTH N10313

EVAPCO's ECO-Cooler series delivers smarter, more reliable water and energy savings over other closed circuit coolers. All models include EVAPCO's Ellipti-fin spiral fin coil to increase efficiency and can be optimized with their Pulse-Pure<sup>®</sup> water treatment system. In 2016, EVAPCO is expanding the line to include more model configurations.

MARKETS: Commercial, Institutional, Industrial

## Environmental Control Unit

**Excel Air Systems** / BOOTH C6824

The Evolution Series is a complete environmental control unit capable of maintaining temperature, humidity and air quality levels. The system is designed to perform in extreme environments 365 days a year and has a slim condenser profile.

MARKETS: Commercial, Institutional, Industrial



**Evolution Series Control Unit**  
Excel Air Systems



**Mini UV CE Light Disinfection System**  
Fresh-Aire UV

## Ultraviolet Light Disinfection System

**Fresh-Aire UV** / BOOTH C3840

Fresh-Aire UV<sup>®</sup> Mini UV CE is the industry's first UVGI light system that's now Certified Europe (CE) compliant and features a new advanced power supply with a lifetime warranty. The Mini UV CE's advanced active power supply, with a digital filtering process, accommodates every mini-split heat pump brand, including all inverter models. Its design more than doubles the UV lamp life to a two-year effective service life.

MARKETS: Residential, Commercial, Institutional, Industrial

## Mini-Split Heat Pump

**Fujitsu General America, Inc.**  
BOOTH N10113

Fujitsu introduces the Mini-Split Ductless Heat Pump and Air Conditioner High SEER Wi-Fi Embedded RLS3Y Series. These wall-mounted mini-split heat pumps provide high efficiency heating and cooling to a home or small business, with the added feature of Wi-Fi capability right off the shelf with no modifications needed.

MARKETS: Residential, Commercial



**RLS3Y Heat Pump and Air Conditioner System**  
Fujitsu General America, Inc.

## Electronic Expansion Valve

**Full Gauge Controls, Ltd.** / BOOTH C3543

Full Gauge Controls offers a digital controller for controlling an electronic expansion valve, in addition to overheating, pressure, defrost and ambient temperature control. This means that the VX-950 plus controls the liquid flow and the refrigeration process like defrost, replacing the controller or thermostat of an installation.

MARKETS: Commercial, Industrial

**VX-950plus Control**  
Full Gauge Controls, Ltd.



## Heat Transfer Fluids

**GALCO SA (Climalife)** / BOOTH C4437

Greenway<sup>®</sup> Neo is an antifreeze heat transfer fluid, based on 1,3-propanediol and corrosion inhibitors, for refrigeration, air conditioning and fire extinguishing system circuits, as well as under-floor heating/cooling circuits.

Greenway<sup>®</sup> Neo provides excellent protection against freezing and gives enhanced protection against the corrosion of metals in various circuits of different designs.

MARKETS: Residential, Commercial, Institutional, Industrial

## Infrared Refrigerant Sensor

**Genesis International, Inc.** / BOOTH C1268

Genesis International, Inc. is a controls manufacturer, specializing in HVAC&R, who will design and manufacture OEM custom controls for virtually any application. Genesis also manufactures the Sherlock line of refrigerant leak monitoring systems and alarm devices for full ASHRAE 15 Compliance. They also manufacture the Wizard line of temperature and pressure controls for defrost, evaporator, compressor and condenser fan control for commercial and industrial refrigeration applications, for full facility environmental control.

MARKETS: Commercial, Institutional, Industrial

## Coil Cleaning System

**Goodway Technologies Corp.**  
BOOTH C4328

The CoilPro CC-200 is a portable, two-in-one coil cleaning system that takes the best technologies for cleaning coils and combines them with a powerful vacuum to speed cleanup. Additionally, the unique drop-in tablet technology eliminates hauling gallons of heavy coil cleaner, and its 200 PSI cleaning power cleans coils fast.

MARKETS: Commercial, Institutional



**CoilPro CC-200 Coil Cleaning System**  
Goodway Technologies Corp.

AIR-CONDITIONING & REFRIGERATION EQUIPMENT, SYSTEMS, COMPONENTS & PRODUCTS

## Magnetic Drive Circulation Pump

**GRI Pumps** / BOOTH N11821

The brushless-DC INTG7 Magnetic Drive Circulation Pump delivers more flow and pressure than its INTG3 predecessor. The in-house, made in the USA, 12-24V integrated motors allow GRI to precisely configure and customize an Integrity Series fluid pump to meet an OEM's specific flow and pressure requirements.

MARKETS:  
Commercial,  
Industrial



INTG7 Magnetic Drive Circulation Pump  
GRI Pumps

## Automatic Flow Limiting Valve

**Griswold Controls / FlowCon International**  
BOOTH C1444

Streamline valve is the first automatic flow limiting valve to allow flow to be changed in the field without change to internal flow elements. Turn the adjustment knob to desired flowrate. Valve inserts directly into the pipe so footprint is the width of pipe flange. A venturi allows flow measurement.

MARKETS:  
Commercial,  
Institutional,  
Industrial



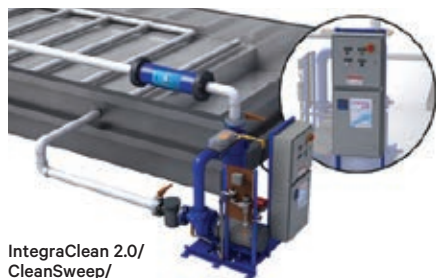
Streamline Valve  
Griswold Controls /  
FlowCon International

## Water Treatment/Filtration

**Griswold Water Systems** / BOOTH N10128

Griswold Water Systems offers a chemical-free water treatment (Wave 2.0), engineered with CleanSweep basin sweeping (low-head), to become IntegraClean 2.0. Remote monitoring, consistently low bio counts, crystal clear cooling tower water and exemplary solids management means that GWS can guarantee you low cycles of concentration.

MARKETS: Commercial, Institutional, Industrial



IntegraClean 2.0/  
CleanSweep/  
Wave 2.0 Water Treatment  
Griswold Water Systems

## Adiabatic Cooler/Condenser

**Guntner U.S. LLC** / BOOTH C6006

Wet when you need it, and dry when you don't- Guntner's eco-friendly Adiabatic Cooling System with hydroBLU™ Technology offers optimal cooling/condensing, utilizing an integrated intelligent control system to minimize water consumption. The Adiabatic Cooling System combines the reliability and ease of use of a dry cooler with peak system efficiencies.

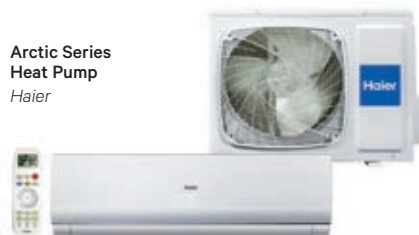
MARKETS: Commercial, Industrial

## Heat Pump

**Haier** / BOOTH N9517

With a standard inverter technology heat pump, homeowners can effectively reduce their electric bill and maintain an ideal comfort level. With the integration of Haier Heat Plus technology, the Artic Series provides an exceptional experience for year-round comfort. The system is capable of providing 100% rated heating capacity at 5°F and toasty warm air at -22°F.

MARKETS: Residential, Commercial



Arctic Series Heat Pump  
Haier

## Dryer/Dehumidifier

**Hangzhou Hongtai Electrical Appliance Co., Ltd.** / BOOTH N8920

Hangzhou Hongtai offers a dryer in fashionable and durable designs. The smart control applies to diverse consumer uses including drying and deodorization, as well as applications for moisture and mold proofing. It is compact in size with high energy efficiency, as well as patented technology.

MARKETS: Residential, Commercial, Institutional, Industrial



Dryer  
Hangzhou Hongtai Electrical Appliance Co., Ltd.

## Brazing Alloy

**Harris Products Group** / BOOTH C4524

Harris Products Group offers brazing alloys with excellent strength and corrosion resistance for joining aluminum-to-aluminum or aluminum-to-copper or brass. They are free flowing with unequaled capillary attraction, ductility and penetration. Their ALUXCOR zinc aluminum alloys also have non-corrosive and non-hygroscopic cesium flux with a lower melting temperature and wider melting range than aluminum silicon alloys.

MARKETS: Residential, Commercial, Institutional, Industrial

## Water Control Valve

**Hays Fluid Controls** / BOOTH C2919

Hays Fluid Controls is a manufacturer of automatic flow control valves for the U.S. Navy and HVAC industry. The patented Mesurflo® valve provides proper system balance, resulting in maximum temperature and humidity control, while conserving pump energy by ensuring each terminal unit receives the design chilled water or hot waterflow.

MARKETS: Residential, Commercial, Industrial

## Corrosion Protection Coating

**Heresite Protective Coatings, LLC**  
BOOTH C5015

Heresite Protective Coatings offers a robust water-based, in-house HVACR coating option to protect from marine/salt-air corrosion. It better manages condensate to reduce water carryover.

MARKETS: Residential, Commercial, Institutional, Industrial

## Head Pressure Control for ECM Motors

**Hoffman Controls Corp.** / BOOTH C1259

Hoffman Controls offers a new digital 880-10D head pressure control for ECM condenser motors. The 880 receives a sensor input from liquid line and modulates the motor in low ambients to regulate head pressure. The 880 is not refrigerant specific, and output signals include adjustable PWM, 0-10Vdc and Fail Safe 10-0Vdc, as well as featuring selectable set points.

MARKETS: Commercial, Institutional, Industrial



Lyric T6 Pro  
Wi-Fi Programmable  
Thermostat  
Honeywell  
International Inc.

## Thermostat

**Honeywell International Inc.**  
BOOTH N8106

With simple functionality that's easy to use, and smart features that are easy to love, the new Lyric T6 Pro Wi-Fi delivers in-demand connectivity without the complexity. Installers can choose to do setup and scheduling at the wall or use the Lyric app. A simple connection process allows installers to use the Lyric app to send personalized emails to their homeowners, which allows them to complete the Wi-Fi connection process on their own. The Lyric T6 Pro Wi-Fi has ventilation control, meeting the ASHRAE 62.2 standard, and is a new standard for simple connectivity.

MARKETS: Residential

## High Efficiency Condensing Water Heater

**HTP Inc.** / BOOTH N10122

HTP's water heater is designed to be a highly efficient and affordable tank type product. It combines the flow capacity of a 50 gallon tank type water heater with the continuous flow feature found in tankless water heaters. The RGH 75 and 100 can also produce more first hour delivery than conventional 50 gallon water heaters. It has a small footprint, dump load capabilities and super-fast recovery with fully condensing technology. It is driven by a firetube design heat exchanger and tank with an ultra low-NOx combustion system and is Energy Star certified.

MARKETS: Residential, Commercial



Crossover Residential  
and Commercial Floor  
Water Heater  
HTP Inc.

AIR-CONDITIONING & REFRIGERATION EQUIPMENT, SYSTEMS, COMPONENTS & PRODUCTS

## Industrial Portable Air Conditioner

**i-Lift Equipment** / BOOTH C6819

PSAC-35 is a One Ton 115V single phase industrial strength portable air conditioner that is reliable, energy efficient and very competitively priced.

**MARKETS:**  
Commercial,  
Institutional,  
Industrial



**PSAC-35  
AIR Conditioner**  
i-Lift Equipment

## Vertically Packaged Self Contained Air Conditioner

**Industrial Climate Engineering (ICE)**  
BOOTH C3213

Industrial Climate Engineering announces the ICExp integrated solution to increased safety in hazardous locations. Their innovative approach to increased safety is to prevent an explosion by only using the latest non-arcing solid state controls, installed in smaller and lighter ICEEx approved increased safety enclosure with non-sparking internal components.

**MARKETS:**  
Commercial, Industrial



**ICExp Air Conditioner**  
Industrial Climate  
Engineering (ICE)

## BEMS Controller

**Innotech Control Systems** / BOOTH C1274

Innotech showcases the new Omni BEMS Controller platform at AHR2017. Omni incorporates native BACnet, cross-platform web-server, alarm annunciation, fully programmable points (Universal I/O), customizable HMI and free programming software. The flexibility and processing capabilities make Omni suitable and affordable for all HVAC and BEMS applications.

**MARKETS:** Commercial, Institutional, Industrial

**Innotech  
Omni Series  
Control System**  
Innotech Control  
Systems



## Adaptive Defrost Refrigeration Module

**Intermatic/Grasslin** / BOOTH C1029

ICUBE™ is a new temperature-initiated adaptive defrost control solution that will reduce defrost cycles by 40% or more per day in commercial walk-in coolers and freezers. Designed to meet pending US Department of Energy conservation standards, The ICUBE™ Module uses smart sensing technology to defrost evaporator coils only when needed.

**MARKETS:** Commercial, Institutional, Industrial

## High Capacity Weighing Scale

**ITE** / BOOTH C5610

ITE's weighing scale is designed for both charging and recovery, can be used with all refrigerants and hydrocarbons, has -150 kg (330 lb) max capacity and is resolution selectable. It has control function (with or without optional valve module) and can be programmed to a desired weight, so that when this value is reached, the scale will sound a signal. It also has three display modes (kg, lb or lb-oz) and an auto power off.

**MARKETS:**  
Commercial,  
Industrial



**WS-150  
Weighing Scale**  
ITE

## Glycol Feed System

**J.L. Wingert Co.** / BOOTH N11120

J. L. Wingert Company introduces their family of quality Glycol Feed Systems: the Economy, the Compact, Wall-Mounted and Freight-Friendly Glycol Feed Systems. Each is available with custom options, such as a remote alarm or multiple pump and pressure combinations for hot or cold applications.

**MARKETS:** Residential, Commercial, Institutional, Industrial

## HVAC Housing

**JSP International LLC** / BOOTH C6045

JSP International's HVAC housings molded from ARPRO® expanded polypropylene (EPP) foam are designed to increase thermal efficiency and to reduce overall system costs. Advantages include mass reduction, increased R-Value, ease of assembly, more durability and 100% recyclability.

**MARKETS:** Residential, Commercial, Institutional, Industrial

## Air Cooled Condenser

**Kelvion Inc., PHE** / BOOTH N7019

Kelvion's weatherproof condensers have a duty range of 26.9kW to 1166kW and are available in horizontal or vertical configurations. This new generation of condenser can use 12mm tube, which reduces cost and refrigerant charge and is specifically designed for optimized air flow with increased strength and reduced weight.

**MARKETS:** Commercial



**Air Cooled Condensers**  
Kelvion Inc., PHE

## Coil Cleaner

**Kemper System America Inc.**  
BOOTH C6646

HVAC CHEM Green Coil Cleaner is an environmentally-friendly mild coil cleaner that is formulated for cleaning aluminum condensers, while including the ability to microchannel into the coils for effective removal of dirt and grime. This biodegradable product may be used on all metal types, including traditional copper tube and aluminum fin in heat exchangers.

**MARKETS:** Residential, Commercial, Institutional, Industrial

## Thermostat

**King I Electronics Co., Ltd.** / BOOTH N7238

King I Electronics Co., Ltd. offers a thermostat for HVAC applications that include BACnet and Wi-Fi Solutions.

**MARKETS:** Residential,  
Commercial, Institutional,  
Industrial

**TH-1250, TH-1310,  
TH-0509 Series  
Thermostat**  
King I Electronics Co., Ltd.



## Outdoor Air Unit

**LG Electronics USA, Inc.** / BOOTH C1330

LG Outside Air Units (OAUs) provide conditioned outdoor air to meet code ventilation requirements for occupied spaces and can be combined with LG VRF indoor units that provide comfort cooling/heating to occupied spaces. The units can also be installed on existing refrigerant circuits, reducing costs.

**MARKETS:** Residential, Commercial, Institutional, Industrial



**VCC-20-P Series Condensate Pump**  
Little Giant/Franklin Electric

## Condensate Pump

**Little Giant/Franklin Electric**  
BOOTH C5120

The new Little Giant® VCC-20-P Series Condensate Pump is designed specifically for air handling and plenum applications. It is constructed with plastics tested by Underwriters Laboratories to meet the requirements of UL Standard 2043 Fire Test for Heat and Visible Smoke Release of Discrete Products and Their Accessories Installed in Air Handling Spaces. Performance: 80 GPH at 1 foot and 20 feet shut off; low profile height of 1-3/4 inches.

**MARKETS:** Residential, Commercial, Institutional, Industrial

## VFD and Contactor

**LSIS USA Inc.** / BOOTH N10535

LSIS USA Inc. offers a bypass solution that optimizes HVAC applications with the user friendly H100 Bypass. This new Bypass from LSIS offers security by avoiding downtime and energy savings, using the advanced H100 series VFD, Contactors, Overload Relays & Starters.

**MARKETS:** Commercial, Institutional



**H100 VFD and  
Metasol Contactor**  
LSIS USA Inc.



**LG Outside Air Unit**  
LG Electronics USA, Inc.

AIR-CONDITIONING & REFRIGERATION EQUIPMENT, SYSTEMS, COMPONENTS & PRODUCTS

### Aluminum Braze Alloy

Lucas-Milhaupt, Inc. / BOOTH C1545

With Lucas-Milhaupt's patent pending triangular cross section brazing rings, there is 25% more surface area contact between the hairpin and return bend compared to round or rectangular rings. More surface contact means better heat conduction between all components. Due to this controlled heating of material, flux activation and dispersion is precise. This results in a stronger, better-looking joint that does not require clean-up.

MARKETS: Residential, Commercial, Industrial

### Refrigerant Cylinder

Manchester Tank & Equipment Co. BOOTH C2409

Manchester Tank unveils new design features on 1000 LB. refrigerant cylinders. Included are new 16 diameter collars featuring three larger openings, which allow easier access to valves. Stamping is incorporated into the collar to improve legibility and appearance. A simplified four piece, four-way pallet base design is now made with structural tubing instead of sheet metal.

MARKETS: Commercial, Industrial

### Rough-in Box for Minisplit AC

Marketair, Inc. / BOOTH N11506

Marketair's rough-in box is used for roughing in wall mounted minisplit units in new construction and to the studs rehab. It provides an easily accessible secure junction box to ensure that linesets, cables and drain point are protected from damage during building operations, facilitating final installation by contractor.

MARKETS: Residential, Commercial, Institutional, Industrial



RoughinBox  
Marketair Inc

### Air Cooled NH<sub>3</sub> x CO<sub>2</sub> Secondary Coolant Chiller

Mayekawa USA-MYCOM / BOOTH C6124

Introducing Mayekawa's new factory packaged NH<sub>3</sub>/CO<sub>2</sub> Secondary Coolant Chiller with air cooled micro channel condenser and low charge NH<sub>3</sub> technology. High efficiencies are achieved with VFD controlled semi hermetic compressor. Designed for supermarkets and food service applications, a water chiller version for building cooling applications is available.

MARKETS: Commercial, Institutional, Industrial

### Energy Sub-Meter

Measurlogic, Inc. / BOOTH C1957

DTS 307 - Ultra Compact Line Powered Three Phase Energy Sub-meter is 311H x 4.25D x 1.38W. The RS-485 connection is ANSI C12.20 Class O2 - which is the highest accuracy in the industry and is suitable for OEMs.

MARKETS: Residential, Commercial, Institutional, Industrial



DTS 307 Sub-Meter  
Measurlogic, Inc.

### Round Duct Connecting Flange

METU-STREIMER / BOOTH C2259

The MFH Round Duct Connecting Flange expands your options for using METU-STREIMER's exclusive round duct connection system. Now, in addition to METU-STREIMER's time-saving 3-piece connection system, you can select their two-flange system assembled using #10 TEK screws.

MARKETS: Residential, Commercial, Institutional, Industrial

### Modular Water Cooled Chiller

Mits Airconditioning Inc./AERMEC S.P.A. BOOTH N9926

Mits Airconditioning Inc./AERMEC offers a 30 ton dual circuit modular water to water chiller, which may be placed side by side or back to back, as well as being stackable, allowing for double the tonnage in a traditional footprint. The unit meets all ASHRAE 90.1 efficiencies and is easy to service, very quiet and BMS compatible.

MARKETS: Commercial, Institutional, Industrial



WRLNY Water Cooled Chiller  
Mits Airconditioning Inc./AERMEC S.P.A.

### Modular Aluminum Framing System

Modular Framing Systems, Inc. BOOTH C4943

Modular Framing Systems, Inc. offers an aluminum framing system with nylon hardware that facilitates easy accurate assembly of a box or enclosure with no welding, grinding, priming or painting necessary.

MARKETS: Commercial, Institutional, Industrial

### Ceiling Mounted Air Handler

Mortex Products, Inc. / BOOTH N9731

Mortex Products' high efficiency series air handlers, with Advanced A coil design, are engineered to achieve or exceed today's demanding energy rating requirements. They offer ECM brush-less DC motor and high performance blower housings.

MARKETS: Residential, Commercial, Institutional, Industrial

### Scroll Compressor

Motivair Corporation / BOOTH N8535

Motivair now offers free-cooling with scroll compressors from 8 - 285 tons, with premium, high-efficiency EC fan motors, achieving higher ambient free-cooling temperatures starting at 28 tons. Free cooling provides greater reliability and system efficiencies for equipment owners.

MARKETS: Commercial, Institutional, Industrial

### Portable Spot Air Conditioner

MovinCool/DENSO Products and Services Americas, Inc. / BOOTH C5110

The Climate Pro<sup>®</sup> 12 portable heat pump combines both cooling and heating capabilities in a single, self-contained unit. It has a cooling capacity of 10,200 Btu/h, heating capacity of 9,900 Btu/h and minimum operating temperature with plenum of 24 degrees Fahrenheit.

MARKETS: Commercial, Institutional, Industrial



Climate Pro 12 Portable Heat Pump  
MovinCool/DENSO Products and Services Americas, Inc.

### Free-Cooling Chiller

MTA-USA, LLC / BOOTH N11333

MTA Aries-FC Free-Cooling Chillers are available with EC fans and in silent and super-silent versions, featuring standard Modbus and Ethernet remote communication. The unique design features a free-cooling section that is separate from the condensing section, allowing 3-season energy savings. Aqua-Free Modules are available to add free-cooling to existing installations.

MARKETS: Commercial, Institutional, Industrial

### Heat Exchanger

Munters Corporation / BOOTH C4906

Munters' EPX heat exchanger core incorporates unique, corrosion-resistant, horizontal polymer tubes to cool make up air in the summer through indirect evaporative cooling. In the winter, EPX operates as a dry heat exchanger for heat recovery. Product applications include offices, schools, supermarkets, hospitals, airports, warehouses, casinos and industrial processes.

MARKETS: Commercial, Institutional



EPX Heat Exchanger  
Munters Corporation

VISIT THE NEW PRODUCT & TECHNOLOGY THEATERS (AT THE SHOW) FEATURING 100+ EXHIBITOR PRESENTATIONS

View the Schedule



AIR-CONDITIONING & REFRIGERATION EQUIPMENT, SYSTEMS, COMPONENTS & PRODUCTS

## Gas Sensor

**Nano Environmental Technology (NET) srl / BOOTH C1051**

N.E.T.'s advanced sensor is based on the NDIR principle, with internal microprocessor for signal linearization, temperature compensation, digital and voltage output. It is projected for a reliable detection of refrigerant gases in 0-2000ppm range and for a simple integration in any gas detection system. It now has built-in gas inlets for aspiration applications and with an extended list of detectable gases: R134a, R125, R1234yf, R1234ze, R404a, R507, R407a, R407f, R-410, R449a and more in development. Versions for SF6, CO2 and hydrocarbons are also available.

MARKETS: Commercial, Industrial

## Multi-Position Air Handler

**National Comfort Products / BOOTH N8713**

National Comfort Product's multi-position air handlers are easy to install and service and matched with all NCP condensing units. Units are available in two ton and three ton sizes with



a high-efficiency multi-speed ECM motor. All units are certified by the AHRI. They achieve optimum efficiency with all NCPE condensing units.

MARKETS: Residential, Institutional

**NCPAH M Series Air Handler**  
National Comfort Products

## Filter Dryer

**NDL Industries, Inc. / BOOTH N7726**

NDL recently added a complete line up of Filter-Driers to its HVACR products. Included is a full line of liquid line, suction line, bi-flow, replaceable core and steel shells. The liquid line includes both XH9 and XH11 desiccant. The XH 11 desiccant is designed for all HFC and HCFC refrigerants, but works well with R410A and will not adsorb the R32 component of 410A. All liquid line filters contain Activated Alumina, 80/20 in the XH9 and 70/30 in the XH11. The O83 drier is rated to five tons for R22 and R410A. All the NDL Filter Driers are furnace brazed in an oxygen free environment to prevent rust. All Driers are UL and RHOS approved and Black Powdered Painted to withstand 1000-hour salt spray test.

MARKETS: Commercial, Industrial

**NDL Filter Driers**  
NDL Industries, Inc.



## Balancing Valve

**NIBCO INC. / BOOTH C4331**

With the FLO-BOSS™ line of balancing valves, which include automatic, manual, lead-free, and now press, NIBCO continues to demonstrate why they are a reliable name in flow control. FLO-BOSS valves offer press fit options, low flow rate capabilities and an extensive line of accessory items (including hoses, air vents, and extensions).

MARKETS: Commercial, Institutional, Industrial



**FLO-BOSS M Balancing Valve**  
NIBCO INC.

## Humidifier

**Nortec Humidity / BOOTH C4706**

Nortec's GS Series gas-fired steam humidifiers are the first fully condensing, high-efficiency systems on the market. Maintenance of the GS has been simplified with a new tank and heat exchanger design. Less consumables reduces maintenance time as well as cost, and more standard features means more flexibility. The GS comes fully stocked as a complete out of the box system and has seamless integration into existing Building Management Systems. The GS Series is ideal when you need humidity for offices, schools, libraries, museums, manufacturing facilities, laboratories, hospitals and printing plants.

MARKETS: Commercial, Institutional, Industrial

**Nortec's GS Series**  
Nortec Humidity



## Gas Leak Detector

**Nu-Calgon / BOOTH N8523**

Cal-Blue Plus, a gas leak detector that finds the smallest leaks, is now available in a new non-aerosol pressurized spray. The high-viscosity formula provides long-lasting bubbles, which enables the product to remain in contact with the surface longer, thereby allowing the smallest of leaks to be detected.

MARKETS: Residential, Commercial, Institutional, Industrial

## Pipe and Fitting System

**NUPI AMERICAS / BOOTH N11723**

NIRON is a complete polypropylene pipe and fitting system for HVAC applications, compressed air and chemical substances. NIRON pipes and fittings are manufactured using random copolymer polypropylene PP-RCT, a plastic material with a special molecular structure, ensuring high mechanical resistance and duration, even at high temperatures and pressures.

MARKETS: Residential, Commercial, Institutional, Industrial

## Heat Exchanger

**Onda USA LLC / BOOTH N8039**

Onda's new L and B series of condensers are new and efficient. Thanks to their new design and advanced tubes, the L condensers deliver high performances with lower approaches than before, at a very competitive price. The B condensers are even more efficient and the choice for state of the art systems when water pressure drop is not too critical.

MARKETS: Commercial, Institutional, Industrial



**L and B Condensers**  
Onda USA LLC

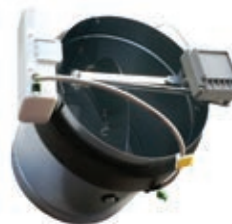
## Zoning System

**OneZone/Airzone / BOOTH C1471**

OneZone VRF is a zoning system for inverter units (VRF and multisplit). It has communications with the indoor unit, controlling the fan speed, operation mode and temperature. It represents up to 30% or more savings in first-costs and energy usage. The new controllers for OneZone VRF make it simpler and better-looking.

MARKETS: Residential, Commercial, Industrial

**OneZone VRF and OneZone Single Zoning System**  
OneZone/Airzone



## BTU Meter

**ONICON Incorporated / BOOTH C1352**

ONICON Incorporated offers a thermal energy metering product designed for use in commercial and light industrial applications.

MARKETS: Residential, Commercial, Institutional, Industrial



**Slim Duct E12SD3UA Mini-Splits**  
Panasonic

## Mini-Split Heat Pump

**Panasonic Heating and Air Conditioning Group / BOOTH N9526**

Panasonic's new low profile conceal duct models are available in nine, 12 and 18K Btu/hr. Indoor units may be installed as single or multi heads with a mix of up to five indoor wall mount and slim ducts. Single Slim Duct units include an auxiliary/emergency heat connector.

MARKETS: Residential, Commercial

## Helium/Hydrogen Leak Detector

**Pfeiffer Vacuum / BOOTH C6227**

The ASM 340 is a helium/hydrogen leak detector for global (chamber) testing or sniffing applications for compressors, coils, valves, sub and final assemblies. For sniffing applications it offers high sensitivity when using helium or diluted hydrogen and can detect leaks as low as 0.001 oz/yr refrigerant equivalent.

MARKETS: Industrial

**ASM 340 Leak Detector**  
Pfeiffer Vacuum



## Evaporative Cooler

**Phoenix Manufacturing Inc. / BOOTH N9917**

The New ProV Series evaporative cooler is a more sophisticated, new generation cooler. It has an ECM motor that operates variable speed control, which can provide substantial operating energy savings. The result is more economical, reliable and efficient cooling. ProV will provide just the cooling necessary for your settings.

MARKETS: Residential



**ProV Series Evaporative Cooler**  
Phoenix Manufacturing Inc.

AIR-CONDITIONING & REFRIGERATION EQUIPMENT, SYSTEMS, COMPONENTS & PRODUCTS

## Pre-insulated Linesets

**PTubes Inc.** / BOOTH C3849

PTubes Inc. offers WHITE RYNO<sup>®</sup> single, double and standard linesets FOR HVAC. These pre-insulated copper pipes are suitable for every application concerning air-conditioning, such as ductless mini-split, heat-pump unit, ducted unit and VRF systems.

MARKETS: Residential, Commercial, Institutional, Industrial

## Fan Impeller

**punker LLC** / BOOTH C1832

The DLight diffuser blower wheel is custom-designed for un-housed use in HVAC applications. Its lightweight aluminum, tabbed construction allows this wheel to produce the highest level of efficiency while reaching high performance density with low noise volume.

MARKETS: Residential, Commercial, Institutional

## Cooling Tower Water Filtration

**Puroflux Corporation** / BOOTH C2012

Puroflux high efficiency separators operate at lower head losses than most other separator brands, while providing removal efficiencies of the finest micron level. Used in conjunction with Puroflux low energy (10-PSI) sweeper jets, separator pump/motor HP is kept to a minimum, reducing overall energy consumption. Puroflux separators and filters reduce solids build-up in cooling tower basins/remote sumps, leading to decreased maintenance time, decreased system fouling and increased system efficiency.

MARKETS: Commercial, Institutional, Industrial



**PF-64 High Efficiency Separators**  
Puroflux Corporation

## Temperature Sensor

**QTI Sensing Solutions** / BOOTH C1869

QTI's QTIP68 sensor combines a highly stable precision thermistor with an extremely durable waterproof housing. This temperature sensor offers excellent performance in humid environments and during harsh freeze/thaw cycles. It is ideal for use with discharge lines, evaporator fins, evaporator coils and cabinet temperature applications.

MARKETS: Residential, Commercial, Institutional, Industrial



**QTIP68 Waterproof Sensor**  
QTI Sensing Solutions

## Auto Voltage Defrost Timer

**Robertshaw** / BOOTH C1021

The Paragon<sup>®</sup> Auto Voltage Defrost Timer is an all-in-one control which replaces over 40 competitive voltage-specific mechanical defrost timers and eliminates the need for a separate short cycle timer and single-phase voltage monitor. The 8145-AV and 8145-AV-M (mechanism only) are mainstays for any contractor's truck, reducing installation time/inventory.



**Paragon 8000 Series Auto Voltage Defrost Timer**  
Robertshaw

MARKETS:  
Commercial,  
Institutional,  
Industrial

## Chiller

**Robur Corporation** / BOOTH C4309

Robur's Five ton Chiller with Heat Recovery utilizes a low environmental impact gas absorption cycle with heat recovery. Any time the unit provides chilled water for cooling, it has the ability to produce hot water up to 176°F. This is an ideal selection for cooling applications that also require domestic hot water or reheat in air handling units. Modular configurations up to 30 tons are now available.

MARKETS: Residential, Commercial, Institutional, Industrial



**PCC2408 Controller**  
Rogerwell Control System Limited

## Universal DDC Controller

**Rogerwell Control System Limited**  
BOOTH C1884

Rogerwell's Universal DDC Controller has AC/DC 24V working voltage, 10 universal input for NTC10K, 0..10 V, 4..20mA, 14 digital input, 4 analogue output DC 0..10 V and 4 digital output (Relay).

MARKETS: Commercial

## Damper Handle

**Rossi HVAC Hardware** / BOOTH C1921

Dampers that still use wing nuts to lock the handles in place can vibrate loose, causing the damper blade to flop around. Rossi's positive locking handles, snap-in bearings and continuous rod damper blades have a new Everlock damper quadrant with 11 locking positions for fine balancing. No more wing nuts needed.

MARKETS: Residential, Commercial, Institutional, Industrial

Rossi  
Dampers -  
Everlock  
Damper  
Handle  
Rossi HVAC  
Hardware



## Variable Air Volume (VAV) Terminal

**Royal Service Air Conditioning Corp. (U.S.A./China)** / BOOTH N7030

Royal Service Air Conditioning is a leading international manufacturer in the HVAC industry, which manufactures air terminals including TU/ TU-I/RF - Single Duct VAV Terminals. The RSV-TU model includes IAQ Metal Lined option mesh or double wall construction. Standard features UF, CA, CAVC models; integrates with all manufactured controllers.

MARKETS: Commercial

## Pressure Transducer

**Saginomiya America, Inc.** / BOOTH N8930

NSK is a compact, lightweight, highly reliable and accurate pressure transducer. NSK offers a diverse set of options, such as different pressure connection types, electrical connectors and pressure ranges (up to 725psi). NSK is an ideal product for dynamic pressure detection and various pressure controls of VRF refrigerant systems.

MARKETS: Residential, Commercial, Institutional, Industrial

## Heat Pump Water Heater

**Sanden International (USA), Inc.**  
BOOTH N9522

Sanden International offers a split-type HPWH with a 4.5kw capacity heat pump, connected via two water lines to a stainless steel storage tank of 43 or 83 gallon capacity. The Heat Pump uses R744 (CO2), a natural refrigerant to improve performance, efficiency and recovery rates. They feature high First Hour ratings.

MARKETS: Residential, Commercial, Institutional

## Surge Protector

**Sealed Unit Parts Co., Inc. (SUPCO)**  
BOOTH C1736

LBK10 Linebacker surge protector diagnostics provide surge protection. TPMOV technology, coupled with removal of equipment from damaging surges, the LBK10 provides a solution for your surge protection needs. Unique diagnostic circuitry analyzes incoming power for overvoltage, under-voltage or lost neutral (ground), disconnecting equipment from power, preventing equipment damage.

MARKETS: Residential

LBK10 Linebacker  
Surge Protector  
Sealed Unit Parts Co., Inc.  
(SUPCO)



**Single Duct VAV Model RSV-TU**  
Royal Service Air Conditioning Corp. (U.S.A./China)

AIR-CONDITIONING & REFRIGERATION EQUIPMENT, SYSTEMS, COMPONENTS & PRODUCTS

### Indirect Evaporative Cooler

**Seeley International (Americas)**  
BOOTH N7338

Climate Wizard CW-80 hyper-efficient, high volume indirect evaporative coolers offer energy savings up to 80%, compared to refrigerated systems performing the same duty. The supply air is colder than wet bulb, with high static pressure and 100% fresh air with no added moisture. Features and benefits include EER of up to 75.3, up to 106 tons of cooling capacity in outside air pre-cooling applications and up to 28,000 cfm supply air.

MARKETS: Commercial, Institutional, Industrial



Climate Wizard CW-80 Evaporative Cooler  
Seeley International (Americas)

### Commercial Dehumidification/ Outdoor Air Equipment

**Seresco Technologies Inc.** / BOOTH N7135

NG-Series of premium fluid coolers combine a compact, lightweight footprint with a quiet, energy-efficient solution for heat exchange in VRF, geothermal loop or economizer modes for HVAC chiller systems. The price-competitive NG-Series carries special advantages for LEED<sup>®</sup>, with features such as two-speed AC motorized axial fans, owl wing fan blades, two-speed fans and V-shaped fin coils.

MARKETS: Commercial, Institutional, Industrial



NG-Series Fluid Cooler  
Seresco Technologies Inc.



THU Series Mini-Split Heat Pump  
Sharp Electronics Corporation

### Inverter Type Mini-Split Heat Pump

**Sharp Electronics Corporation**  
BOOTH N10640

Sharp's flagship THU series (up to 24 SEER and up to 13.5 HSPF) is available in 12,000 and 18,000 BTU with Sharp's patented Hot Gas Pipe System designed to continue heating operation down to -13F (-25C), without an electric heater in the outdoor unit.

MARKETS: Residential

### Aluminum Foil HVAC Tape

**Shurtape Technologies LLC**  
BOOTH C2515

AF 100 is a UL 181 A-P/B-FX Listed aluminum foil HVAC tape that is now enhanced with EasyPEEL<sup>™</sup>, an innovative split liner technology. The EasyPEEL crack and peel liner is easy to start, even while wearing gloves, so you can get the job done quickly and hassle-free.

MARKETS: Residential, Commercial, Institutional, Industrial

### Touch Panel

**SMK Electronics Corporation USA**  
BOOTH C851

By maximizing the use of transparent conductive materials, SMK has designed a revolutionary capacitive touch panel with transparent borders on three sides. This unique touch panel allows customers to design displays free of cumbersome bezels or printed covers, for a fresh, sleek, high end appearance to any environment control device.

MARKETS: Residential, Commercial, Institutional, Industrial



Bezel-Free  
Capacitive  
Touch Panel  
SMK Electronics  
Corporation USA

### Fancoil

**Sonkor Global HVAC Solutions Ltd.**  
BOOTH N8920

Sonkor produces a wide range of fan coils (1,800 different models and sizes) and specify products according to each market's requirements (ETL, CE, Eurovent, AHRI), and at every standard voltage (110V- 60HZ /220V 50 and 60Hz).

MARKETS: Residential, Commercial, Institutional, Industrial



Solstice Extreme Low Ambient Heat Pump  
SpacePak-A Mestek Co.

### Low Ambient Heat Pump

**SpacePak-A Mestek Co.** / BOOTH C1525

Solstice Extreme, SpacePak's low ambient heat pump, provides primary heating and cooling, even in severe weather climates. Its environmentally friendly design uses EVI technology and the clean efficient characteristics of hydronics as its primary energy source, to deliver perfectly conditioned air to any occupied space. The award winning EVI technology and high efficiency condenser used in SpacePak low ambient heat pumps provides improved efficiency, reliability and heating capacities. EVI increases heating capacity by over 30%, making it the perfect compressor for severe ambient conditions (0°F) in cold climates, while maintaining the ability to cool during the summer months. Solstice heat pumps run more quietly than traditional systems, with their dual fan, horizontal discharge configuration and soft start activation. Heat pump high efficiency compressors operate on R-410A, but use only a fraction of the refrigerant needed by other systems, while providing superior performance and high COP and EER.

MARKETS: Residential, Commercial, Institutional, Industrial

### A/C Leak Sealer

**Spectroline** / BOOTH C5415

Spectronics' leak sealer works with all popular AC&R refrigerants and oils. It is a non-Polymer, oil-soluble formula safe for system components and recovery equipment. It easily overcomes system pressure, including high-pressure R-410A systems, has three convenient delivery methods, the EZ-Ject<sup>™</sup> or GLO-STICK<sup>™</sup> method for smaller AC&R systems and the Big-EZ<sup>™</sup> method for larger AC&R systems. It also meets ASHRAE 97 standard for chemical stability.

MARKETS: Residential, Commercial

### Coil Cleaner

**SpeedClean** / BOOTH C3008

The CoilShot Condenser cleaner transforms the way contractors clean condenser coils, with a revolutionary tablet-based system that eliminates the need to haul around bulky cleaner. Simply attach the CoilShot tool to a garden hose, drop in a tablet and shoot foaming cleaner deep into coils to remove dirt and debris.

MARKETS: Residential, Commercial



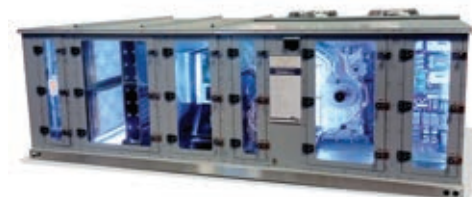
CoilShot Condenser  
Cleaner  
SpeedClean

### Rotary Energy Recovery Ventilator

**Spinnaker Industries, Inc.** / BOOTH C5924

Spinnaker's systems provide an economical alternative for conventional 100% air applications. Cooling is available in D/X air cooled, water cooled or heat pump. Heating options are available in natural gas, electric, hot water or steam. For projects that require neutral air supply, dehumidification can be engineered to provide the desired indoor environment.

MARKETS: Commercial, Institutional, Industrial



RErvhc Recovery Ventilator  
Spinnaker Industries, Inc.

AIR-CONDITIONING & REFRIGERATION EQUIPMENT, SYSTEMS, COMPONENTS & PRODUCTS

## Cooling Tower

**SPX Cooling Technologies, Inc.**  
BOOTH C1726

Compared to other factory-assembled cooling towers, NC Everest offers several customer advantages, including 50% greater cooling capacity, using up to 35% less fan power, for higher energy savings, fewer piping and electrical connections to save installation costs and greater interior access to make inspections and maintenance of components safer and easier.

MARKETS: Commercial, Institutional, Industrial



Marley NC Everest Cooling Towers  
SPX Cooling Technologies, Inc.

## Portable Industrial Air Conditioner

**TEMP-AIR, Inc.** / BOOTH N10429

The TEMP-COOL<sup>®</sup> model TC-18B air-cooled air conditioner is a good solution for your temporary cooling needs. This unit provides 17,300 BTUs per hour of cooling and cools 600 square feet of space. The TC-18B can also be used as a dehumidifier. All TEMP-COOL<sup>®</sup> air conditioner purchases include a three year warranty.

MARKETS: Commercial, Institutional, Industrial

TC-18B Air Conditioner  
TEMP-AIR, Inc.



## A/C Leak Sealant

**TSI Supercool** / BOOTH N10540

A/C Leak Stop permanently seals leaks in A/C and refrigeration systems. It is safe for all HVAC units and does not contain harmful polymers. The additive package protects against future corrosion. A/C Leak Stop reduces compressor noise and extends compressor life.

MARKETS: Residential, Commercial, Institutional, Industrial

## Portable Tote

**Turbo Torch, an ESAB Company**  
BOOTH C3734

The Victor G150 Portable Tote conveniently packages every item needed for oxy-fuel applications.

MARKETS: Residential, Commercial, Institutional, Industrial

Victor G150 Portable Tote  
Turbo Torch, an ESAB Company



## Coil Cleaner

**Vapco Products, Inc.** / BOOTH C2035

Vapco Products proudly introduces its newest coil cleaner '1953'. It is aptly named for the year Vapco Products began manufacturing cleaning and maintenance chemicals for the HVAC/R industry. It is a condenser, evaporator and micro-channel cleaner, degreaser and deodorizer. It is also biodegradable, concentrated and metal safe.

MARKETS: Residential, Commercial, Institutional, Industrial

## Solder Free Tube Connector

**Vulkan Lokring** / BOOTH N10110

VULKAN Lokring tube connectors are the original solder free tube connectors. Made in the USA for VRV/VRF commercial refrigeration installation and repair. Vulkan has more than 35 years of experience, at least 2 billion LOKRING connections completed to date, and at least 7000 satisfied customers worldwide. Lokring solution requires no Nitrogen and is 30% to 50% faster than brazing.

MARKETS: Residential, Commercial, Institutional, Industrial

## Ultrasonic Leak Detector

**Superior Signal Company LLC**  
BOOTH C1724

The new 3rd Generation AccuTrak<sup>®</sup> VPE-GN Gooseneck features all-new digital circuitry and offers 20% greater sensitivity to find even smaller refrigerant and gas leaks. The new design also adds Peak Hold Display, Over Range Audio Alarm, Smart Battery Management and greater shock resistance, for a rugged and reliable AccuTrak<sup>®</sup> VPE-GN.

MARKETS: Residential, Commercial, Institutional, Industrial



3rd Generation VPE-GN Leak Detector  
Superior Signal Company LLC

## Water-Cooled Chiller

**Trane** / BOOTH C3106

CenTraVac<sup>™</sup> chillers deliver reliable, energy-efficient and sustainable operation for industrial and comfort cooling applications. They provide low cooling costs, while delivering environmental benefits that meet sustainability goals, and are capable of operating with either R-123 or next-generation, low global warming potential (GWPs) refrigerants R-514A or R-1233zd.

MARKETS: Commercial, Industrial



Trane CenTraVac Centrifugal Chiller  
Trane

## Airflow Measuring Probe Station

**Ultratech Industries Inc.** / BOOTH N7608

Ultratech Industries' Airflow Measuring Probe Station with Control Damper (AMPSCD) is ideal for projects requiring accurate measurement of airflow in laboratory supply and exhaust ducts and fume hood exhaust. AMPSCD airflow measuring probe stations are available in sizes up to 16. They are manufactured in either galvanized steel with anodized aluminum probes or all stainless steel.

MARKETS: Commercial, Institutional, Industrial

## Metal Filter

**Vantech Co., Ltd.** / BOOTH N9440

Vantech offers high quality metal filters and strainers in comprehensive ranges for various HVAC&R components and parts. Any kind of customized strainers can be supplied within a short lead-time. Vantech has more than five decades of experience in Japan and now has expanded production to China and Thailand. They will solve any problem occurring during use or before designing.

MARKETS: Residential, Commercial, Industrial

## Digital Water Mixing and Recirculation System

**Watts Water Technologies, Inc.**  
BOOTH C8317

This digital water mixing and recirculation system provides commercial and institutional facilities with safe, efficient tempered water delivery. An ASSE 1017-listed product, IntelliStation allows fast-response digital temperature regulation of domestic water within +/-2°F.

IntelliStation contains a smart controller with a 3.5-inch full-color touchscreen interface displaying nearly 200 combinations of data.

MARKETS: Commercial, Institutional



IntelliStation Mixing and Recirculation System  
Watts Water Technologies, Inc.

## Air Cooled Chiller/ Water Cooled Chiller

**Tandem Chillers, Inc.** / BOOTH N10226

Tandem Chillers introduces higher efficiency air cooled chillers with the addition of new speed controlled fans, as well as water cooled chillers with new high efficiency evaporator and condenser.

MARKETS: Commercial, Institutional, Industrial

## Refrigerant Pressure and Temperature Sensor

**Transducers Direct** / BOOTH N11511

The CirrusSense Router completes Transducers Direct's wireless Bluetooth solution for monitoring refrigerant pressure and temperature. The combination of the CirrusSense TDWLB pressure transducer, router and data portal allow the user to receive email/text alerts, data log and view data remotely anywhere in the world an internet connection is available, 24/7.

MARKETS: Residential, Commercial, Institutional, Industrial

## Radiant Ceiling Panels

**Zehnder Rittling** / BOOTH N9317

Zehnder Carboline is an elegant and innovative response to the requirements placed on modern indoor climate control. Carboline radiant ceiling panels provide the necessary heating and cooling for occupied spaces, while seamlessly integrating into the building design. The copper meander is embedded in a carbon graphite layer, providing ideal energy transmission and high performance.

MARKETS: Commercial, Institutional, Industrial

HEATING EQUIPMENT (BOILERS, BURNERS, EXCHANGERS, ETC.)

## Magnetic Filter

**ADEY Professional Heating Solutions**  
BOOTH C5437

MagnaClean DualXP collects the damaging black iron oxide sludge that builds up in heating systems. In doing so, DualXP prevents sludge and debris from clogging up pipework, plate heat exchangers and radiators, which reduces efficiency and heat output and ultimately causes the breakdown of the boiler.

MARKETS: Residential



**MagnaClean DualXP Filter**  
ADEY Professional Heating Solutions

## Condensing Boiler

**Advanced Thermal Hydronics-A Mestek Co.** / BOOTH C1525

The KN-Series gas-fired direct vent cast iron condensing boilers by Advanced Thermal Hydronics combine the durability of cast-iron with ultra-high condensing efficiencies of up to 99%. Available with inputs ranging from 200 – 3,000 MBH, All KN-Series boilers come equipped with HeatNet, ATH's proprietary integrated boiler management control system, which monitors system parameters (including boiler temperatures, limit circuit inputs and overall system demands) and modulates boiler-firing rates to maximize turndown ratios and maintain peak efficiency regardless of the load. HeatNet allows up to 16 boilers to be networked and provides constant communication with the Building Management System.



MARKETS:  
Residential,  
Commercial,  
Institutional,  
Industrial

**KN Series Boiler**  
Advanced Thermal Hydronics-A Mestek Co.

## Heat Exchanger

**AIC Heat Exchangers** / BOOTH C5637

The JAD heat exchanger is unique in design and diverse in capacity. Developed for flexibility, it can be an integral component of any sophisticated heat recovery system, while just as suitable for everyday use. The JAD angular connections accommodate smooth, gradual flow entrances and exits.

MARKETS: Commercial, Industrial

## Radiant Flooring Panel

**Atlas EPS** / BOOTH N12136

ThermalStar Radiant Comfort floor panels are precision molded from expanded polystyrene with a distinct orange color. The insulation panels form a firm base for water heated floors, with two models available for new construction and retrofit projects. These panels have a groove pattern that allows plastic tubing to be easily installed for even heat transfer and energy efficiency.

MARKETS: Residential, Commercial, Institutional

## Boiler Combustion Side Cleaner

**Axiom Industries Ltd.** / BOOTH N10326

Axiom Industries Ltd. offers a cleaner to remove the incrustations from the fire side of a boiler combustion heat exchanger. The cleaner provides energy savings by removing combustion residue from the fire side surface of heat exchangers made from stainless steel or aluminum in condensing boilers. The cleaner also restores heat transfer to the original levels.

MARKETS: Residential, Commercial, Institutional, Industrial

## Condensing Boiler

**Burnham Boilers - U.S. Boiler Co.**  
BOOTH C1136

The K2 Firetube joins Burnham Boiler's extensive line of condensing boilers. Available in six sizes and an optional combi model, the K2 Firetube features versatile top and bottom connections, outdoor reset, advanced controls and zero/minimal de-rate for high altitude installations.

MARKETS: Residential



**K2 Firetube Boiler**  
Burnham Boilers - U.S. Boiler Co.



**SEP4™ Separator**  
Caleffi Hydronic Solutions

## Combination Magnetic Separator

**Caleffi Hydronic Solutions** / BOOTH N9922

The ASME registered six to 14 inch flanged SEP4™ combines air and dirt removal with hydraulic separation, while also providing high performance magnetic particle removal with powerful magnets. The 4-in-1 functionality saves system installation and maintenance costs, as there is no need to include separate air and dirt separators.

MARKETS: Commercial, Institutional

## Electronic Ignitor

**Carlin Combustion Technology, Inc./Hydrolevel Company** / BOOTH C2024

The new Pro-X 45000 is Carlin's most durable ignitor. The re-engineered circuit design, stronger components and lower internal operating temperatures make this their toughest, longest lasting ignitor. In their most rigorous testing, under extreme conditions the Pro-X 45000 outlasted every ignitor Carlin ever tested - and they have tested them all. The Pro-X 45000 is also Universal. The rugged thermoplastic housing features mounting locations for virtually any burner.

MARKETS: Residential, Commercial



**Pro-X 45000 Universal Ignitor**  
Carlin Combustion Technology, Inc./Hydrolevel Company

## Condensing Economizer

**Cleaver-Brooks, Inc.** / BOOTH C3521

The Cleaver-Brooks C2X-HE two-stage condensing economizer achieves a high efficiency for a steam boiler/economizer combination. Using a proprietary coil that enables advanced heat transfer in a non-traditional horizontal design, the C2X-HE achieves 94% efficiency for a steam boiler, equal to condensing boiler models.

MARKETS: Commercial, Institutional, Industrial

## Motorized Ball Valve

**Comparato Nello S.r.l.** / BOOTH N11738

Sintesi is one of Comparato's leading products, with a patented push fast connection and all-in-one electrical connection. New Sintesi Smart is a proportional actuator, with positioning signal in voltage or current, for modern heating/cooling plants. It is highly precise and suitable for all applications requiring a mixing/flow partialization function.

MARKETS:  
Residential



**Sintesi and Sintesi Smart Actuator**  
Comparato Nello S.r.l.

## Console Heater

**Cozy Heating Systems LLC** / BOOTH N7141

The Cozy Vented Console Heater has a new cabinet design, larger access door for maintenance/service, self-leveling legs (up to three) and can be used with Natural or LP gas. It also contains a stainless steel burner, piezo igniter and draft diverter within the cabinet, allowing a better fit for the space.

MARKETS: Residential

## Condensing Boiler

**De Dietrich Boilers** / BOOTH C5144

The Absolute Condensing Boiler is a cast aluminum heat exchanger type that has a user friendly Honeywell Sola control touchscreen. It has a 10:1 turndown ratio with capacities ranging from 750 up to 4000 MBH. There are many design features and components including high quality gas valve, high quality fan and VFD, unique stainless steel drain pan, and integrated all steel combustion air plenum. The Absolute boilers are completely assembled in North America.

MARKETS: Residential, Commercial, Institutional, Industrial



**Absolute Model ABS Series Condensing Boiler**  
De Dietrich Boilers

HEATING EQUIPMENT (BOILERS, BURNERS, EXCHANGERS, ETC.)

### EC Centrifugal Blower

ebm-papst Inc. / BOOTH C4528

Heating output of up to two MW is now possible with the G3G315, a single compact EC blower designed for use in condensing boilers. This is enough to heat a 50-story building or a housing development with 50 family homes.



MARKETS: Residential, Commercial

G3G315 Series Gas Blower  
ebm-papst Inc.

### Magnetic Filter

Eclipse Magnetics / BOOTH C6645

The Boilermag XT industrial boiler filter with stainless steel housing, from Eclipse Magnetics, is designed to prevent the buildup of ferrous oxide and scale in central heating systems. As water circulates through the system, magnetic rods attract the iron oxide and remove particles down to sub-micron size.



MARKETS: Industrial

Boilermag XT Industrial Boiler Filter  
Eclipse Magnetics

### Trace Heating Element

Electro Plastics, Inc./STEP Warmfloor  
BOOTH N11828

STEP Heat Trace is a low-voltage heating system designed for use in hazardous classified locations. The homogeneous conductive polymer provides very low current per surface area and cannot give raise to sparks. The system is suitable for ice prevention and heat control on decks, pipelines, valves, containers and instruments.

MARKETS: Residential, Commercial, Industrial

### Parallel Positioning System

Fireye Inc. / BOOTH C2120

NXF4000, Fireye's newest product, is a parallel positioning system with integrated Flame Safe Guard. It offers 10 line voltage digital inputs, ModBus communication, VFD drive and four selectable profiles. It also features a 24 point firing rate, O2 probe, PID loops, set point select, setback and lead lag control. An SD card interface supports data logging/setup backup.



MARKETS: Industrial

NXF4000 Parallel Positioning System  
Fireye Inc.

### Thermostatic Control Valve

Fluid Power Energy Inc. / BOOTH N12021

Benefits of a Fluid Power Energy Thermostatic Control Valve include short lead and delivery time, wide range of temperatures, heavy duty durable construction and being self-contained. It also features field replaceable element, is tamper proof and operates in any orientation.

MARKETS: Residential, Commercial, Institutional, Industrial

### Heat Exchanger and Finned Tube

Fortune Smart Industrial Limited  
BOOTH C3748

Stainless Steel (SS304, SS304L, SS316 & SS316L) Finned Tubes by Laser Welding Processes are used mainly in hard surroundings, such as oil and chemical, where high anti-corrosion performances and high level heat transferring efficiency are required.

MARKETS: Residential, Commercial, Industrial



Stainless Steel Heat Exchanger; Stainless Steel Finned Tube

Fortune Smart Industrial Limited

### Firetube Condensing Boiler

The Fulton Companies / BOOTH C5520

The Endura+ is a PURE Optimized firetube condensing boilers that fits an ultra-compact footprint while surpassing the reliability of existing designs. The heat exchanger captures up to 99% of the energy in combustion gases, while water is intelligently directed through engineered flow paths, enhancing both heat transfer and durability.

MARKETS: Commercial, Institutional, Industrial

Endura+ (EDR+) Boiler  
The Fulton Companies



EWH 6 Heaters  
Gorenje North America, Inc.

### Electric Storage Water Heater

Gorenje North America, Inc.  
BOOTH N7014

New design innovation on the EWH 2.5 to 20 gallon capacity line-up allows versatile floor or wall mounted installation options, featuring easy top-mounted plumbing and electrical connections. The EWH 6 offers a breakthrough horizontal or vertical mounting on both install options. EWH metal tanks are high quality cold rolled steel, glass enameled, coated with additional corrosion protection, and large magnesium anode rod.

MARKETS: Residential, Commercial, Institutional

### Low Temperature Heating VRF System

Gree Electric Appliances, Inc. of Zhuhai  
BOOTH N9722

Ultra Heating GMV5 can provide 100% nominal heating capacity under -4°F outdoor ambient temperature, with COP up to 2.14; it can provide 80% nominal heating capacity under -22°F outdoor ambient temperature. Under -31°F outdoor ambient temperature, the unit can operate stably. Ultra Heating GMV5 is a heat pump system with low-temperature heating efficiency, SEER up to 20.5 and HSPF up to 11.5. It has the energy star certificate in North America.

MARKETS: Commercial

### Hydronic Heating Boiler

Harsco Industrial Patterson-Kelley  
BOOTH N7722

The P-K THERMIFIC VELOX is a non-condensing hydronic heating boiler used in standalone and hybrid heating applications. Sizes range from 700 to 2000 MBTUH. It takes advantage of the P-K NURO<sup>®</sup> controller, which is standard on all of the P-K boiler platforms. This allows for easy interface with BMS systems, as well as other boiler types, to maximize system efficiency, especially on retrofits of existing systems. It also has the ability to be applied to domestic hot water applications.

MARKETS: Commercial, Institutional, Industrial

P-K THERMIFIC VELOX Boiler  
Harsco Industrial Patterson-Kelley



### Combustion Management System

Honeywell International Inc.  
BOOTH N8106

SLATE<sup>™</sup> from Honeywell brings together configurable safety and programmable logic for the first time. It's one platform from one vendor that can easily be customized for almost any application, in less time with less complexity.

MARKETS: Commercial, Industrial



SLATE<sup>™</sup> Integrated Combustion Equipment Management  
Honeywell International Inc.

### UV Flame Detector

IDEAL FLAME LLC / BOOTH N7828

Ideal Flame's stand-alone UV flame detector works with any externally wired burner control. No amplifier is necessary, and it features a durable semi-conductor sensor.

MARKETS: Residential, Commercial, Institutional, Industrial



BST KLC20 Flame Detector  
IDEAL FLAME LLC

### Radiant Tubing

Infloor Heating Systems / BOOTH N11810

InfloorPERT, by Infloor Heating Systems, is the next generation of radiant tubing. It is constructed of five layers, giving it significant strength and durability. The core and outermost layer are PE-RT, and sandwiched in the middle is an integral ethylene vinyl alcohol (EVOH) oxygen barrier. InfloorPERT is flexible and easy to install, and it is recommended for hydronic radiant heating, cooling and snowmelt applications.

MARKETS: Residential, Commercial, Institutional

HEATING EQUIPMENT (BOILERS, BURNERS, EXCHANGERS, ETC.)

### Tankless Water Heater

**Intellihot Green Technologies, Inc.**  
BOOTH N10138

Debuting at the 2017 AHR Expo, Intellihot's Gen II iQ models, such as the iQ251, are its newest and biggest tankless, on-demand water heaters. These commercial heavy-duty, tankless water heaters deliver up to 1.5 million BTUs with no storage tanks required, and they give new meaning to smart water.



*MARKETS: Residential, Commercial, Institutional, Industrial*

**iQ251 Water Heater**  
Intellihot Green Technologies, Inc.

### Compact Boiler Distribution System

**IVAR US INC.** / BOOTH N7728

MULTIMIX-C is a new zoning distribution substation for average-sized heating systems. The features of the system are modularity, compactness and reduction in installation times. MULTIMIX-C mixing kit can be used to control mixing and distribution in underfloor radiant circuits, with optional full temperature manifolds connected upstream of the mixing valve, to feed radiators or heated towel rails by using the primary pump.

*MARKETS: Residential, Commercial*

**MULTIMIX-C Distribution System**  
IVAR US INC.



### Acidic Condensate Wastewater Treatment

**JJM Boiler Works, Inc.** / BOOTH N10809

JJM Boiler Works' wastewater treatment is used for treatment of acidic condensate wastewater produced by condensing boilers, hot water

heaters, furnaces and flue stack drains. It is rated @ 250,000 BTU's, with 1.70 GPH flow, and features an inner replaceable cartridge for easy service.

*MARKETS: Residential, Commercial, Institutional, Industrial*

**V-250 Vertical mount Neutralizer**  
JJM Boiler Works, Inc.



### Electronic Wall Heater

**King Electrical Manufacturing Co.**  
BOOTH N8300

King presents the smart series LPW-ECO2S Wall Heater that combines a sleek and modern architectural design with performance, energy efficiency and user control of the ECO2S 2-stage electronic controller with remote. The LPW-ECO2S delivers maximum energy efficiency with automatic 2-stage heating and automatically uses the lowest wattage needed to heat the room. It includes fan only and timer mode options, as well as a remote control for simple operation. King's exclusive dual Pic-A-Watt steel fin elements allow customers to select from a range of wattage options, tailoring the heater to an area's specific heating requirements, up to 4500W.

*MARKETS: Residential, Commercial*

**LPW-ECO2S Wall Heater**  
King Electrical Manufacturing Co.



### Commercial Boiler

**Lochinvar, LLC** / BOOTH N8306

This product is an expansion of the popular Power-Fin commercial boiler line that offers an input capacity from 2.5 to 5 million BTU/Hr and includes the Smart Touch Control™ and CON•X•US® remote connect.

*MARKETS: Commercial, Institutional, Industrial*

**Power-Fin Commercial Boiler**  
Lochinvar, LLC



### Insulation Product

**Nutec** / BOOTH N10928

MaxForm™ Shapes are processed from alumina and silica blends for applications with temperatures up to 3000°F (1650°C). They are vacuum formed products that are made to resist high velocities. These products are ideal for furnace linings, boiler duct and stack linings due to their low thermal conductivity, low heat loss and storage. MaxForm™ Shapes are available with special densities upon request and in a wide variety of shape configurations.

*MARKETS: Industrial*



**Gas or Dual Fuel 1000M/1200M Monox Series Burners**  
Oilon US Inc.

### Combustion System/Burner

**Oilon US Inc.** / BOOTH N10913

The Oilon 1000M/1200M Monox series of gas and dual fuel burners are designed and manufactured with a built in air fan solution instead of a separate fan, which provides a higher capacity, up to 45.4 MMBtu/h, for easy monoblock installation. They offer smooth and silent operation, cost and energy savings and lower NOx emissions.

*MARKETS: Commercial, Institutional, Industrial*

### High Modulation Mixer

**Polidoro USA, Inc.** / BOOTH C5717

Polidoro, through its consolidated structure and its automatic production lines, manufactures all kind of PREMIX burners: tubular, flat, steel or fibre. To further increase efficiency of the boiler, they manufacture an air-gas mixer able to reach the power modulation 1:10, using fully mechanical work.

*MARKETS: Residential, Commercial, Industrial*

### Scotch Marine Packaged Boiler

**Powermaster Boiler** / BOOTH C4940

Powermaster presents the Wet-Back Three and Four Pass Scotch Marine Packaged Boiler.

*MARKETS: Commercial, Institutional, Industrial*



**WB-A2-3P and WB-A2-4P Boiler**  
Powermaster Boiler

### Condensing Boiler

**RBI Water Heaters-A Mestek Co.**  
BOOTH C1525

Flexcore symmetrical firetube condensing gas fired boilers brings hydronic heating products to high levels of operating efficiency. Available in sizes ranging from 1500 MBH to 6000 MBH, Flexcore fully modulating boilers offer up to 99% maximum efficiency with high durability. HeatNet 3.0, with touch screen technology, provides an industry leading control platform capable of seamlessly integrating FlexCore into any application, including variable primary systems.

*MARKETS: Commercial, Institutional, Industrial*

**FlexCore Boiler**  
RBI Water Heaters-A Mestek Co.



### Upflow Gas Furnace

**Rheem Heating & Cooling Division**  
BOOTH C1336

The R97V is one of Rheem's most contractor-friendly furnaces, offering more than 35 new features. It includes a dual seven-segment alphanumeric LED display (industry first) and exclusive Rheem EcoNet™-enabled technology. Both features give technicians fast and accurate diagnostics, cutting down time on job site and call backs. EcoNet provides complete diagnostic information, system status, active alarms, fault history and sensor input readings.

*MARKETS: Residential*

### Steam Condensate Return

**Roth Pump Co.** / BOOTH C4418

Roth 212°F (100°C) Condensate Return Stations are designed to handle water near or at the boiling point. Low NPSH submerged pumps provide full capacity at any liquid temperature up to 212°F (100°C). These units will deliver hot water at temperatures up to 212°F (100°C) and will not vapor bind at 212°F (100°C). Receiver capacities to 130 gallons (492 liters) can be supplied on these units.

*MARKETS: Commercial, Institutional, Industrial*

**212°F Steam Condensate Return Station**  
Roth Pump Co.



HEATING EQUIPMENT (BOILERS, BURNERS, EXCHANGERS, ETC.)

## Modulating Upflow Gas Furnace

**Ruud Heating & Cooling Division**  
BOOTH C1336

The contractor-friendly U97V is an industry-first patented heating unit that modulates between 40-100-percent operation and offers more than 35 new features. This unit has a seven-segment alphanumeric LED display (industry first) and exclusive EcoNet™-enabled technology. Both features give technicians fast and accurate diagnostics, cutting down time on job site and call backs.

MARKETS: Residential

**Ruud Ultra Series EcoNet™ Enabled Modulating Upflow Gas Furnaces/U97V Model**  
Ruud Heating & Cooling Division



## Flextube Boiler

**SIMONEAU / BOOTH C6446**

The Maverick is a robust multi-purpose platform boiler designed for all industries, all applications, all installations and all combustions. This flextube boiler goes up to 70,000 PPH for the steam application and up to 66,95 MMBTU for the hot water generator.

MARKETS: Commercial, Institutional, Industrial

## Gas Fired Unit Heater

**Sterling HVAC Products-A Mestek Co.**  
BOOTH C1525

Nexus brings leading edge condensing heat exchanger technology to Sterling HVAC's successful unit heater product offering. Nexus' tri-metal stainless steel heat exchanger technology, proprietary pre-mix burner design and fully modulating configurations provide industry leading efficiencies of up to 97%. Multiple firing configurations are available, including single-stage, two-stage and full modulation, utilizing outdoor air reset or indoor air reset modes. Available in seven sizes (100 – 400 MBH) in both natural gas and LP gas, Nexus can be vented through PVC and CPVC for application flexibility. All units are also field convertible to separated combustion.

MARKETS: Commercial, Institutional, Industrial



**Nexus Heater**  
Sterling HVAC Products-A Mestek Co.

## Infrared Heater

**Superior Radiant Products Ltd.**  
BOOTH C2327

Superior Radiant Products (SRP®) state of the art Premier VS/VH High Efficiency Radiant Heating Systems are custom engineered to precisely fit your building heat requirements. The continuous radiant system with thermal efficiencies up to 95% can be designed as condensing or non-condensing, up to 1.2 million BTUH on a single vacuum pump. Unique patented technology results in more precise burner performance with reduced flue emissions. Even heat distribution provides just the right amount of heat to maximize comfort and energy savings. Adding the optional SRP Accu-Rate® Control enables communication with energy management systems and independent zone or system modulation.

MARKETS: Commercial, Institutional, Industrial



**Premier VS High Efficiency Infrared Heating System**  
Superior Radiant Products Ltd.

## Heat Exchanger

**SWEP North America, Inc. / BOOTH C4128**

SWEP's B35TDW true double wall model can perform at the industry's highest ratings of up to 255 gpm and can target any double wall application in the higher capacity ranges focusing on de-super heaters, boilers, transformer oil cooling and heat recovery from air compressors. Up to 2½ inch connections are available.

MARKETS: Residential, Commercial, Institutional, Industrial

## Zone Valve Control

**tekmar Control Systems Ltd.**  
BOOTH N8317

Zone Valve Control 304V provides heat to hydronic heating systems with up to four connected thermostats to operate the respective zone valves and a system pump. The control includes exercising to prevent circulator seizure, easy zone expansion, zone priority, post purge for domestic hot water tanks and RoomResponse technology for adjusting boiler target temperatures based upon thermostat on-time.

MARKETS: Residential, Commercial

**Zone Valve Control 304V**  
tekmar Control Systems Ltd.



## Tube Cleaning System

**Thomas C. Wilson, LLC. / BOOTH N8520**

The Wils-Away™ 520 Electric Tube Cleaning System has applications in cleaning straight and curved tubes in heat exchangers, condensers, chillers, absorbers, water heaters, coolers and other small diameter pressure vessels from 3/8" – 1-1/2" (9.5 to 38.1mm) Outer Diameter Tubes. Removes light to medium soft deposits.

MARKETS: Commercial, Industrial



**Wils-Away™ 520 Electric Tube Cleaning System**  
Thomas C. Wilson, LLC.

## Room Heater

**Toyotomi USA, Inc. / BOOTH C6536**

Toyotomi's room heater complements the high efficiency, aquastatic controlled boilers that use low water temperatures. Internal thermostat control circuitry communicates with zone valve or boiler controller, which is an exclusive feature that no other convector has. It offers heating of an area of 300-1,000 sq. ft. and heat output of 3000 BTU per hour on low to 20200 BTU per hour on high.

MARKETS: Residential



**Heat Convactor Model HC-20**  
Toyotomi USA, Inc.

## Condensing Gas Boiler

**Triangle Tube / BOOTH N8000**

The Prestige boiler features a uniquely designed stainless steel heat exchanger and boasts 95% efficiency across the entire range. It has the capability to modulate to meet the current demand, resulting in less cycling and lower operating costs. The Prestige ACVMax is equipped with a stainless steel premix burner that can operate on natural or propane gas. The ACVMax controller in the Prestige includes many advanced features, including EZ Setup, Multiple Boiler Cascade and Multiple Zone Control for maximum installation flexibility.

MARKETS: Residential, Commercial, Institutional

**Prestige ACV Max Boiler**  
Triangle Tube



## Industrial Boiler

**Unilux Advanced Manufacturing, LLC**  
BOOTH C2446

EVOLV Industrial Boilers are the latest design and solution for industrial applications and offer the fastest heat up times with useable energy in 13 minutes from start. The design of the high performance heat exchanger incorporates a membrane type wall design without the need for welded webbing found on other boilers. It can expand or contract with the heavy-duty shell and enclosure that is gas tight to 5" wc as standard. The housing is comprised of individual, removable, fully insulated and gasketed 11GA. steel, reinforced panels.

MARKETS: Commercial, Institutional, Industrial



**Evolv Boiler**  
Unilux Advanced Manufacturing, LLC

## Condensing Boiler

**Velocity Boiler Works, LLC / BOOTH C4937**

To meet demand for a smaller, lighter, high-efficiency, stainless steel condensing boiler that can be installed quickly and used immediately, Velocity Boiler Works designed the Shadow. The wall-mounted Shadow is a gas-fired, condensing boiler that pairs high efficiency with impressive ease of installation and operation. It is available in five sizes.

MARKETS: Residential

**Shadow Condensing Boiler**  
Velocity Boiler Works, LLC



## Duct Heater

**WATTCO / BOOTH C6920**

WATTCO™ duct heaters come in various sizes and dimensions to fit any compartment. There are three types of duct heaters available, open coil, tubular or finned tubular heating elements that are either flanged or inserted in the duct. Air duct heaters are primarily used in air flowing ventilation systems and comfort-heating applications, while process duct heaters are mainly used for industrial process heating applications (ovens that require re-circulated air or forced circulation).

MARKETS: Commercial, Institutional, Industrial



VENTILATION EQUIPMENT (FANS, BLOWERS, VENTS, DIFFUSERS, ETC.)

### Combination Louver/Damper

**Air Conditioning Products Company (ACP)** / BOOTH C6549

ACP's Model ACL offers superior resistance to rain, while also allowing you the ability to completely close the opening. The four deep frame is available in either a channel or flanged frame with drainable blades in the front and adjustable blades with seals in the back. This is all within one frame.

MARKETS: Commercial, Institutional, Industrial



**Model ACL Louver/Damper**  
Air Conditioning Products Company (ACP)

### Pre-Mix Combustion Blower

**AMETEK Precision Motion Control**  
BOOTH C5009

The Nautilair Pro Series 400VAC, three phase blower provides AMETEK's highest aerodynamic performance with the ability to customize programmable features including RPM, speed command, performance and tach-out. With fixed performance over a range of 380-480VAC input line voltage, the Nautilair Pro Series allows the elimination of expensive step down transformers.

MARKETS: Commercial, Industrial



**Nautilair Pro Series 400VAC Blower**  
AMETEK Precision Motion Control

### Inline Duct Fan

**Bahcivan Elektrik Motor San ve Tic. Ltd. Sti.** / BOOTH N10922

BVN's AC Centrifugal inline duct fans are backward curved, allowing straight airflow and easy installation with high pressure stability, low noise level and high efficiency. Both sides of the BDTX fans are suitable to fit into the centrifugal duct and can be fixed with fastening clamps. The fans can be performed in any mounting position and are UL Listed.

MARKETS: Residential, Commercial, Institutional, Industrial



**BDTX Inline Duct Fan**  
Bahcivan Elektrik Motor San ve Tic. Ltd. Sti./Cinching Tool

### Filtered Exhaust Fan

**Continental Fan Manufacturing Inc.**  
BOOTH N7701

The upgraded AFF filtered exhaust fan is an excellent choice for use where filtered intake or exhaust air is required. Its adjustable pitch impeller efficiently supplies clean, filtered air to OEM machinery and equipment markets. Applications include pressurizing electrical cabinets, unducted paint spray booths and battery rooms.

MARKETS: Commercial, Industrial



**AFF Filtered Exhaust Fan**  
Continental Fan Manufacturing Inc.

### Energy Recovery Ventilator

**Aldes** / BOOTH C2311

The InspirAIR Compact 80 is an energy recovery ventilator (ERV) designed specifically for smaller dwellings within larger multi-unit buildings, such as condominium towers, apartment buildings, senior residences and student residences. The maximum airflow capacity is about 75 cfm of balanced mechanical ventilation per residence, and it can be installed on a concrete slab above the bathroom or in a closet. The ERV has a high heat-recovery performance and an economizer mode to reduce the amount of heating or cooling required to bring the indoor air temperature to the desired level. The outdoor air is filtered through a MERV6 filter before entering the dwelling, eliminating larger particulate matter.

MARKETS: Residential



**InspirAIR Compact 80 Energy Recovery Ventilator**  
Aldes

### Flexible Duct

**ATCO Rubber Products, Inc.**  
BOOTH C3515

ATCO #031 is a UL 181 Class 1 Greenguard Certified air duct, designed for indoor use as a supply and return air duct in residential and commercial low-to-medium pressure heating and air conditioning systems. It's sheathed in a rugged, durable and tear resistant tri-directionally scrim reinforced metallized polyester jacket.

MARKETS: Residential, Commercial, Institutional

### Inline Fan

**Atmosphere Inc.** / BOOTH N8610

The new Vortex Powerfans VTX400C is a four inch inline fan, supplied with a current sensor, and ideal to solve the problems caused by long duct runs on clothes dryers. The current sensor detects when the dryer is turned on to automatically activate the fan mounted on a separate electrical circuit. It is available with or without a five minute turn off time delay.

MARKETS: Residential



**VTX400C Inline Fan**  
Atmosphere Inc.

### Cinching Tool

**Bollhoff-Attexor Clinch Systems**  
BOOTH C6909

Bollhoff's cinching tools join metal without fasteners. They are used to replace spot welding and non-structural fastener applications.

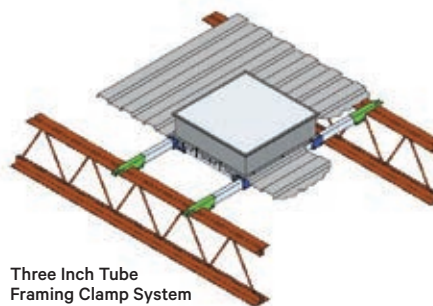
MARKETS: Residential, Commercial, Institutional, Industrial

### Support Frame for Roof Equipment

**Chicago Clamp Company** / BOOTH N11211

The Three Inch Tube Framing Clamp System is the simple, safe and fast method for providing all the structural support needed for roof accessories. The system supports loads up to 1,000 lbs. and is easily installed without any welding onto your building. Save time and reduce cost on your support framing projects for exhaust fans, skylights and small RTUs.

MARKETS: Commercial, Institutional, Industrial



**Three Inch Tube Framing Clamp System**  
Chicago Clamp Company

### Grille/Register

**Dayus Register & Grille Inc.**  
BOOTH C5507

Dayus' new series of No Flange Bar Linear includes three frame options to drywall over (DABLRH), plaster into place (DABLRJ) or screw mount in (DABLRN) based on the job demands. They have uniform blade and frame thickness for a clean, built-in look, as well as removable core for an easy installation. They are also available with Opposed Blade Damper.

MARKETS: Residential, Commercial



**No Flange Bar Linear**  
Dayus Register & Grille Inc.

VENTILATION EQUIPMENT (FANS, BLOWERS, VENTS, DIFFUSERS, ETC.)

### Energy Recovery Ventilator

**dPoint Technologies Inc.** / BOOTH C6137

dPoint's polymer membrane ERV technology recovers 75% of the thermal energy and 50% of the latent energy (humidity) lost from building ventilation systems. This is achieved by transferring the heat and humidity between the outgoing and incoming airstreams across dPoint's patented polymer membrane and ERV exchangers. The dPoint ERV technology has many features and benefits, including 0% cross contamination between the airstreams, a polymer membrane that won't grow mold or bacteria and an exchanger that is water washable.



MARKETS:  
Residential,  
Commercial,  
Institutional

ERV  
dPoint  
Technologies Inc.

### Diffuser/Ceiling Fan

**ECCO Manufacturing™** / BOOTH C5246

Acting as both a diffuser and a ceiling fan, the DAD requires no electricity; it uses the forced air from the operating HVAC units in the building instead. Airflow from the attached ductwork flows through the diffuser's hub and out the engineered linear slots of the fan blades to produce its turning motion without electrical assistance.

MARKETS: Commercial, Institutional, Industrial



**Dynamic Air Diffuser (DAD)**  
ECCO Manufacturing™

### Replacement Fan Coil Unit

**International Environmental Corporation**  
BOOTH C1113

Designed for fast, minimally invasive installation where space is at a premium, the MINIREStoraMOD™ fan coil allows for replacement of smaller, aging hi-rise fan coils without waiting for a complete whole room renovation budget. MINIREStoraMOD™ installs within an existing hi-rise unit which has had internal components removed.

MARKETS: Residential,  
Commercial, Institutional

MiniReStoraMOD™ Fan Coil  
International Environmental  
Corporation



**Brushless DC Variable Speed Motor**  
Motor-Tech International Ltd

### Brushless DC Motor

**Motor-Tech International Ltd.**  
BOOTH N12120

Motor-Tech International's speed motor features single phase AC input power and is capable of maintaining constant torque and speed. The airflow remains unchanged with a decrease in air pressure, and it can apply 10VDC for external low-power control circuitry. It also comes with a built-in driver.

MARKETS: Residential, Commercial, Industrial

### Fabric Ductwork for Data Centers

**DuctSox Corporation** / BOOTH C5931

DataSox is the first directionally adjustable air displacement system built for data centers. DataSox's air displacement places large amounts of air within the cold aisle with low velocity, while the adjustable nozzles allow for higher wattage server targeting. This equals minimum spillage, better PUE ratings and lessens the need for containment.

MARKETS: Commercial, Institutional



**DataSox Air Displacement System**  
DuctSox Corporation

### Backdraft Damper

**Enginia Srl** / BOOTH C6145

Enginia announces their new, low-leakage aluminum backdraft dampers. Features include edge and lateral seals for low leakage and quiet operation, linked or non-linked blades, attachable counterweights and snap-on flanges that can be attached to either side of the frame. Linking of the blades is by a smooth slide mechanism.

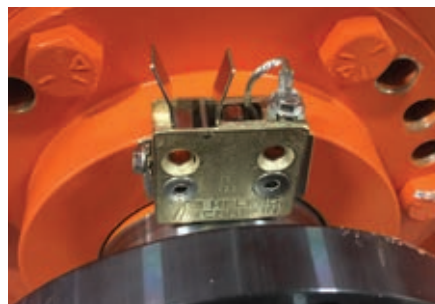
MARKETS: Commercial, Institutional, Industrial

### Motor Bearing Protection System

**Helwig Carbon Products, Inc.**  
BOOTH C6228

The BPK-IM2 bearing protection kit will protect HVAC, pump, compressor and other motors from bearing failures and downtime due to induced electrical currents. This is especially important for motors controlled by VFD's.

MARKETS: Commercial, Institutional, Industrial



**BPK-IM2 Bearing Protection Kit**  
Helwig Carbon Products, Inc.

### IE4 Permanent Magnet Motor

**Lafert North America** / BOOTH C6010

Lafert will be presenting their new low speed permanent magnet synchronous IE4 motors, offering optimized efficiencies with increased performance capabilities and lower noise levels. Lafert's IFM motors have the convenience of direct couple (no gearbox) and integrated or stand-alone drives.

MARKETS: Residential, Commercial, Institutional, Industrial

### Gas Vent

**M&G DuraVent** / BOOTH C3415

M&G DuraVent's special gas vent has been redesigned for superior ease of installation, FasNSeal® Model FNS single wall special gas vent is UL 1738/ULC S636 listed for use with natural gas or propane Category II, III and IV appliances or Canada's Type BH Gas Vent Systems. FasNSeal® FNS can be used on a wide range of applications, including high efficiency gas boilers, furnaces, booster heaters, pool heaters, water heaters, unit heaters or tankless water heaters.

MARKETS: Residential, Commercial, Industrial

Model FNS  
Gas Vent  
M&G DuraVent



### Axial Fan Blade

**Multi-Wing America, Inc., a Crowley Company** / BOOTH C5320

The high efficiency rates delivered by EMAX4 considerably reduce the power consumption of the final product, which not only contributes to economic savings but also complies with the 2015 requirements of the ErP Directive. EMAX4 is designed to fit Multi-Wing's existing range of hubs, and it retains all the advantages of the Multi-Wing modular system with variable pitch angles. EMAX4 is available in 5, 6, 7, 9 and 12-bladed configurations with a diameter range from 24.56 to 36.22 inches.

MARKETS: Residential, Commercial, Institutional, Industrial



**EMAX4 Fan Blade**  
Multi-Wing America, Inc., a Crowley Company

### Fabric Air Dispersion System

**Durkee America Inc. (NanoSox fabric ducts)** / BOOTH N7123

Inherently fire resistant, NanoSox will not degrade with washing, wear and tear. As a precision engineered product, NanoSox is trusted among the most demanding customers to provide a system with better air distribution, quicker easier installation and more energy and cost efficiency.

MARKETS: Commercial, Institutional, Industrial

VENTILATION EQUIPMENT (FANS, BLOWERS, VENTS, DIFFUSERS, ETC.)

### Industrial/Commercial Ductwork

**Nordfab Ducting** / BOOTH N9141

Nordfab's Quick-Fit™ clamp-together modular system now includes heavier duty 14 gauge galvanized steel ducting. Duct with Quick-Fit rolled edge ends, connected via QF clamps, can be installed/replaced without special tools, rivets, screws or welding. Quick connections reduce installation and downtime. Fully welded seams eliminate leakage and improve energy.

MARKETS: Commercial, Institutional, Industrial



**XD Ducting™**  
Nordfab Ducting

### Plenum Blower

**PEERLESS BLOWERS** / BOOTH C1916

Peerless Blowers, a leader in air movement, is introducing a new high efficiency plenum blower. A European designed impeller, coupled with a premium motor, will be a quiet and efficient solution for many HVAC needs.

MARKETS: Residential, Commercial, Institutional, Industrial



**Plenum Blower**  
PEERLESS BLOWERS

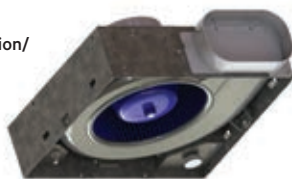
### Cabinet Fan

**PennBarry** / BOOTH C3134

The Zephyr Revolution (ZR) is a versatile, modular, ceiling/inline exhaust fan line which boasts several Energy Star compliant models with UL 507, 705 and Tub and Shower certifications. An ultra-low profile makes it a perfect fit for height-constrained installations such as hotels, condominiums or multi-story applications. It is available with several architectural grille options, including LED illumination.

MARKETS: Residential, Commercial

**Zephyr Revolution/  
ZR Fan**  
PennBarry

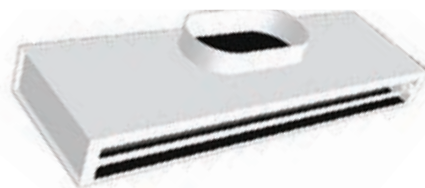


### Linear Smart Diffuser

**Performance Aire** / BOOTH C5915

The LAD diffuser is a unique linear diffuser that automatically changes between the cooling and heating modes. The self-contained diffuser has a thermostatic device that senses supply air temperature to determine if airflow is directed horizontally along the ceiling (cooling mode) or vertically downward (heating mode).

MARKETS: Residential, Commercial, Institutional, Industrial



**LAD Linear Anti-Strat Smart Diffuser**  
Performance Aire

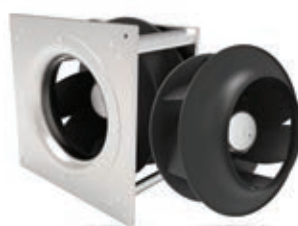
### Backward Curved Impeller Fan

**Rosenberg USA, Inc.** / BOOTH C1820

The high-efficiency, high-flow Rosenberg E-Series backward curved impeller line now includes new AC and EC models from 12.4 to 22 inches in diameter. Designed for applications such as data center cooling, energy recovery, dehumidifiers and roof-top units, the E-Series provides up to four percent greater energy efficiency with half the noise.

MARKETS: Commercial, Institutional, Industrial

**Rosenberg  
E-Series  
Backward-  
Curved Fans**  
Rosenberg  
USA, Inc.



**DFD-LP Dynamic Fire Damper**  
Ruskin

### Dynamic Fire Damper

**Ruskin** / BOOTH C3334

The Ruskin® DFD-LP is the only low-profile integral frame-sleeve dynamic fire damper in the industry. The 1-½ hour rated single aerodynamic blade dynamic (fan on) or static (fan off) damper also has an easy resettable fuse link. In addition, the convenient reset arm simplifies testing to meet NFPA requirements.

MARKETS: Commercial, Institutional, Industrial

### Ductwork Flange

**Sheet Metal Connectors, Inc.**  
BOOTH C4149

The Sheet Metal Connectors, Inc. E-Z Flange System makes connections quick, attractive and virtually leak free, thanks to their exclusive angled barrel clamp. Simply apply the gasket, mate the flanges and tighten the carriage bolts. The E-Z Flange with Barrel Clamp is available in sizes from 6" to 120".

MARKETS: Commercial, Institutional, Industrial



**E-Z Flange**  
Sheet Metal  
Connectors, Inc.

### Decorative Register/Grille

**SteelCrest Architectural Accents**  
BOOTH N11039

SteelCrest's beautiful entry-level Bronze Series of decorative HVAC registers and grilles has been expanded to include three designs, four tough finishes and even more sizes. They are perfect for budget-minded residential and commercial projects.

MARKETS: Residential, Commercial

### Dryer Duct Booster

**Tjernlund Products, Inc.** / BOOTH C5706

Dryer Duct Booster meets UL 705 DEDPV and IRC-2015 requirements and saves significant energy-reducing drying times by 50% or more. It reduces lint build-up, dust and fire hazards by maintaining proper velocity in duct runs up to 150 equivalent feet. Also featured is the Lint Blitzer™ material handling wheel and a five year no-clog guarantee. The 50 watt motor is not exposed to heat, lint or moisture. It includes 115 VAC cord with automatic operation.

MARKETS: Residential, Commercial



**LB2 Dryer Duct Booster**  
Tjernlund Products, Inc.

### Radial Fan System

**ZIEHL-ABEGG, Inc.** / BOOTH N7922

The new ZApilot system, an innovative radial fan system for electronics cooling and controlled domestic ventilation, is up to ten percent more efficient than products currently available on the market. ZApilot meets all market standards for installation dimensions and mounting points and achieves a marked improvement in efficiency.

MARKETS: Commercial, Industrial



**ZApilot**  
ZIEHL-ABEGG, Inc.

INSTRUMENTS & CONTROLS



**ADT680W Wireless Digital Pressure Gauge**  
Additel Corporation

**Pressure Gauge**

**Additel Corporation / BOOTH C874**

Additel's ADT680W Wireless Digital Pressure Gauge combines high-precision, wireless communication and data logging capability. The 680W series is available in accuracy classes of 0.05%, 0.1% and 0.25%FS. Offered are ranges from vacuum pressure to 40,000 psi and everything in between. Each unit can store up to 140,000 readings, which consist of date, time, pressure and internal temperature. The 680 series digital pressure gauges offer high performance, reliability and affordability.

MARKETS: Commercial, Industrial

**Flow Meter Encoder Register**

**Badger Meter / BOOTH C5034**

The HR-E LCD 420 produces a 4-20 mA DC output, plus either a pulse output (scaled or unscaled) or a standard encoder output. Badger Meter HR-E LCD 420 encoders are compatible with Recordall® Disc Series, Turbo Series and Compound Series meters.

MARKETS: Commercial, Institutional, Industrial



**High Resolution 4-20 LCD Encoders and Registers**  
Badger Meter

**Wi-Fi Thermostat**

**Braeburn Systems, LLC / BOOTH C1926**

New low cost Braeburn BlueLink Smart Connect universal Wi-Fi thermostats are available for single stage and multistage residential, commercial or institutional applications, with a five square inch blue backlit display, wired remote sensing, auto changeover and keypad lockout.

MARKETS: Residential, Commercial, Institutional



**Model 7300 and 7305 Thermostats**  
Braeburn Systems, LLC

**Gas Detector**

**Critical Environment Technologies Canada Inc. / BOOTH C1673**

Critical Environment Technologies Canada offers controllers with 128 gas channel inputs for monitoring large, complex applications. They feature flexible analog/digital/wireless transmitter combinations, data logging, touchscreen display, alarm, four SPDT relays, as well as an extensive menu system with a password protected structure, enhanced logic control and much more.

MARKETS: Commercial, Institutional, Industrial

**IAQ Monitor**

**E Instruments International LLC BOOTH N8820**

The brand new 2016 AQ Comfort by E Instruments is an IAQ monitor made for the HVAC professional. The convenient and economical all-in-one instrument provides the latest in indoor air quality monitoring and real-time data logging for IAQ analysis in homes, schools, offices and more.

MARKETS: Residential, Commercial, Institutional

**AQ Comfort Monitor**  
E Instruments International LLC



**Controller/Recorder**

**Eurotherm by Schneider Electric BOOTH C3315**

The nanodac™ Boiler Controller/Recorder offers graphical recording combined with PID control. The compact ¼ DIN panel mount unit offers four high accuracy universal inputs for data recording and PID control. This secure data recording device with accurate control is enhanced by a full color, 1/4 VGA display to bring a crystal clear operator interface to even the smallest of process control needs.

MARKETS: Commercial, Institutional, Industrial



**nanodac™ Boiler Controller/Recorder**  
Eurotherm by Schneider Electric

**Gas Ignition Control**

**Fenwal Controls / BOOTH C2120**

The new FENWAL 35-40 12/24VDC ignition control is designed for the new generation of gas-fired appliances using internal regulated DC power supplies. With its compact footprint, high energy spark and digital communications for operating mode and fault status, the FENWAL 35-40 is the worldwide control of choice. It is approved to EN298, AGA and the new 60730-2-5 Harmonized Standard.

MARKETS: Commercial, Institutional, Industrial



**FENWAL 35-40 12/24VDC Ignition Control**  
Fenwal Controls

**Water Hardness Analyzer**

**Heyl Brothers North America L.P. BOOTH C1873**

The Testomat® 808 from Heyl USA is an inline limit value analyzer measuring total water hardness via titration method. The analyzer prevents lime scale and hardness breakthroughs. Applications include cooling towers and boiler houses, where continuous monitoring of water hardness and controlling the water softening process reduces operational/maintenance costs.

MARKETS: Commercial, Institutional, Industrial

**Calorimetric Flow Sensor**

**JUMO Process Control, Inc. BOOTH C6229**

JUMO's calorimetric flow sensor measures and monitors flow velocities of water and aqueous media. The device operates without any moving parts and offers color-changing LED display based on thresholds and analog or switching output. Also featured is nominal pressure: up to 25 bar, as well as simple startup with micro USB interface on the device and optional setup program.

MARKETS: Industrial

**JUMO PINOS L01 Calorimetric Flow Sensor**  
JUMO Process Control, Inc.



**Duct Air Leakage Tester**

**Kanomax USA, Inc. / BOOTH N8510**

Kanomax is introducing a new Duct Air Leakage Tester (DALT) for commercial duct systems. The instrument provides step-by-step test configuration and automated leakage testing based on the SMACNA HVAC Air Duct Leakage Test Manual. It is designed for easy transport to the job, with a small footprint and stair walker dolly.

MARKETS: Residential, Commercial, Institutional, Industrial



**Kanomax DALT 6900 Duct Air Leakage Tester**  
Kanomax USA, Inc.

**Ultrasound Instrument**

**LUDECA, Inc. / BOOTH C6338**

Ultrasound technology is a key element in asset condition management. The SDT270 Ultrasound Instrument detects air and steam leaks. Electrical faults such as arcing, tracking and corona can be detected, preventing failures and eliminating safety risks. Other applications include bearing condition monitoring, particularly lubrication and tightness testing for building envelopes, clean rooms, etc.

MARKETS: Residential, Commercial, Institutional, Industrial

**SDT270 Ultrasound Instrument**  
LUDECA, Inc.



**Wi-Fi Control**

**Navien, Inc. / BOOTH N7917**

NaviLink™ is designed to support remote access for all Navien tankless water heaters (NPE series), combi-boilers (NCB-E series) and gas condensing boilers (NHB series) through the new NaviLink™ Wi-Fi control and mobile App.

MARKETS: Residential, Commercial, Institutional, Industrial

**NaviLink™ Wi-Fi Control**  
Navien, Inc.



INSTRUMENTS & CONTROLS

**Data Logger**

**Onset Computer Corp / BOOTH C1158**

The HOBO MX1102 Data Logger records and transmits CO2 data wirelessly to mobile devices via Bluetooth technology. The HOBO MX1102 Data Logger allows for easier access to hard-to-reach critical monitoring spaces, dramatically reducing logger setup and readout time.

MARKETS: Residential, Commercial, Institutional, Industrial



**HOBO MX1102 - CO2 Data Logger**  
Onset Computer Corp

**Air Quality Monitor**

**Particles Plus, Inc. / BOOTH N9137**

The 7302-AQM provides combined particulate (PM), temperature, humidity, CO2 and TVOC monitoring in a professional-grade high accuracy instrument. The AQM's large color display provides ease of use while performing indoor air quality investigations, health and safety exposure studies or long term site monitoring.

MARKETS: Residential, Commercial, Institutional, Industrial



**7301-AQM Air Quality Monitor**  
Particles Plus, Inc.

**Pressure/Temperature/  
Vacuum Gauge**

**Ritchie Engineering Co., Inc. - YELLOW JACKET Products Division / BOOTH C2729**

The YELLOW JACKET<sup>®</sup> ManTooth<sup>™</sup> Pressure/Temperature gauge has been expanded to add an interchangeable vacuum gauge for precise vacuum readings at the system. The ManTooth<sup>™</sup> line provides technicians with a full line of wireless, smart-phone controlled product options when servicing cooling and refrigeration systems. The Bluetooth<sup>®</sup> based ManTooth<sup>™</sup> family utilizes an updated, free downloadable ManTooth<sup>™</sup> RSA app that calculates and displays the systems actual readings in an easy-to read format on your iPhone, iPad or Android device. Product features include an interchangeable/removable vacuum gauge.

MARKETS: Residential, Commercial, Institutional, Industrial

**Communicating Thermostat**

**Robertshaw Climate / BOOTH C6546**

The RS300 Slimline<sup>™</sup> Communicating Thermostat family includes three Wi-Fi and three Ethernet models, giving contractors a great combination of features, including an advanced remote sensor network, text and email alerting, powerful PM notices and customer retention tools. Thermostats include the Robertshaw Climate Cloud for PC/Mac and mobile and tablet apps.

MARKETS: Residential, Commercial, Institutional, Industrial

**Actuator**

**Rotork-Schischek / BOOTH C1070**

Schischek Max series actuators are designed for industrial HVAC applications. They feature fast operating times with fail safe, spring return, explosion proof or NEMA 4X options and true fire damper capabilities.

MARKETS: Institutional, Industrial



**Schischek ExMax Actuator**  
Rotork Schischek

**Flow Meter**

**SIKA USA Inc. / BOOTH N7217**

Sapphire jewel bearings provide long term reliability for OEM potable water applications. Sika's meters offer use of plastic components, which are glass fiber reinforced for durability with a wide measuring span (60:1). Also featured are digital output signals for high resolution in any installation position with an NPT threaded connection.

MARKETS: Residential, Commercial, Institutional, Industrial

**VTY20 Flow Meter**  
SIKA USA Inc.



**Combustion Analyzer**

**Testo, Inc. / BOOTH C4717**

Introducing the first all-smart combustion analyzer with powerful data acquisition and Bluetooth remote operation. Measurements include O<sub>2</sub>, CO (NO/NO<sub>x</sub> optional), draft, ambient and flue temperatures with on-site Smart Device reports and optional Bluetooth printer. The CO test range is up to 30,000 ppm with over-range protection.

MARKETS: Commercial



**Testo 330i - All-Smart Commercial Combustion Analyzer**  
Testo, Inc.

**Ventilation Test Instrument**

**TSI Inc. / BOOTH C4312**

AirPro<sup>™</sup> Meters are a revolutionary wireless ventilation measurement solution that maximizes productivity by offering easier measurement access, unmatched accuracy, seamless multi-data reporting and a user-friendly interface for fast, intuitive operation. They provide superior service through license and probe management, extended service contracts and advanced probe replacements that eliminate downtime.

MARKETS: Commercial, Institutional, Industrial



**AirPro<sup>™</sup> Wireless Air Meters**  
TSI Inc.

**Carbon Dioxide Probe**

**Vaisala, Inc. / BOOTH C1053**

The Vaisala CARBOCAP<sup>®</sup> Carbon Dioxide Probe GMP252 is a new intelligent probe for measuring carbon dioxide. This robust, stand-alone measurement device is designed for use in agriculture, refrigeration, greenhouses, outdoors and other demanding HVAC applications. The GMP252 is based on Vaisala's unique, second-generation CARBOCAP<sup>®</sup> technology that enables exceptional stability.

MARKETS: Commercial, Institutional, Industrial



**GMP252 Probe**  
Vaisala, Inc.

MORE THAN  
**200**  
EXHIBITORS  
WILL BE  
DISPLAYING  
CONTROLS &  
RELATED  
PRODUCTS

Check complete  
list of companies  
at [ahrexpo.com](http://ahrexpo.com)

BUILDING AUTOMATION & CONTROL PRODUCTS

## Thermostat/Controller

**ABIES Technology, Inc.** / BOOTH C1858

ABIES welcomes the IoT era with thermostats, humidistats, VAV controllers, unitary controllers and Temperature/Humidity/Dew Point/CO2 Transmitters. They are all accessible by popular WiFi transmission and BACnet IP open protocol. The built-in web page provides handy self-contained WiFi configuration.

*MARKETS: Residential, Commercial, Institutional, Industrial*

## Motor Control

**Advance Controls, Inc.** / BOOTH C4946

ACI's Redundant VFD Packages provide motor applications with redundant, back-up VFD control in the event of drive failure. Communication and control from the Building Automation System (BAS) automatically remain constant to the motor. For applications where traditional Bypass can't be used, but operation is critical, these packages contain single point main power disconnect, options for indoor or outdoor enclosure, multi-motor output for fan arrays, cooling towers, etc.

*MARKETS: Commercial, Institutional, Industrial*

## Indoor Air Quality Monitor

**Airboxlab** / BOOTH C852

Foobot is the first smart indoor air quality monitor able to take control over the HVAC system, to improve the end user's indoor air quality.

*MARKETS: Residential, Commercial*



**Foobot Air Quality Monitor**  
Airboxlab

## Temperature and RH Transmitter

**AirTest Technologies Inc.**  
BOOTH C1253

The TR9277-EO from AirTest is a wireless, CO2, temperature and RH transmitter that is powered by indoor ambient light, making it ideal for zero energy/minimal environmental impact projects or applications where zero maintenance is required. The transmitter communicates using the EnOcean<sup>®</sup> wireless protocol utilized by many leading building control companies.

*MARKETS: Residential, Commercial, Institutional*

**TR9277-EO Transmitter**  
AirTest Technologies Inc.



## Butterfly Valve

**BELIMO Americas** / BOOTH C1252

The newly designed, advanced butterfly valve and actuator assembly is an intelligent, energy efficient and reliable high flow solution. With a focus on ease of installation, application flexibility and longevity, this series sets performance standards in the HVAC market.

*MARKETS: Commercial, Institutional, Industrial*

**Advanced Butterfly Valve**  
BELIMO Americas



## Ball Valve

**Bray Commercial, Division of Bray International** / BOOTH C1180

Bray offers multiple Cv's per size, starting as low as 0.46. Featuring 1/2" to 2" in size, the low torque allows for less expensive actuators. They are rated for low pressure steam and high temperature water.

*MARKETS: Commercial, Institutional, Industrial*



**ST2 Ball Valve**  
Bray Commercial, Division of Bray International

## CO<sub>2</sub> Sensor/Monitor

**C.H.C. System Co., Ltd.** / BOOTH C1484

NMA series and SMA series can detect IAQ, CO2 concentration, temperature and relative humidity. They can get the data automatically by inserting Micro SD card. They can also support HVAC system in buildings (such as schools, offices and greenhouses) wirelessly.

*MARKETS: Residential, Commercial, Institutional, Industrial*

## End-to-End IoT Platform

**Ciqada** / BOOTH C870

The Ciqada platform consists of fully integrated hardware modules, secure web services and mobile apps, allowing designers to add internet monitoring and control to new or existing products. Data is accessible through standard web and mobile apps as shown in the product image or via API for customization.

*MARKETS: Residential, Commercial, Institutional, Industrial*

## Building Controller

**Contemporary Controls** / BOOTH C1458

The BAScontrol Series is a line of BACnet unitary controllers complying with the B-ASC device profile that support both BACnet/IP and Sedona Framework (SOX) protocols via an Ethernet connection. A resident web server allows controllers to be accessible via a common web browser.

*MARKETS: Commercial, Institutional, Industrial*

## Research Services

**Continental Automated Buildings Association (CABA)** / BOOTH C1772

The CABA Research Program offers a range of opt-in technical and advisory research services designed to provide industry stakeholders with collaborative market research and R&D opportunities. The program is designed to be flexible and to maximize relevant and actionable results for all research participants, while concurrently sharing and minimizing costs. It leverages agnostic, systematic and proven project management techniques to ensure that realistic and neutral research results are achieved.

*MARKETS: Residential, Commercial, Institutional, Industrial*

## Network Gateway

**Control Solutions, Inc.** / BOOTH C1167

Babel Buster Pro-V230 connects BACnet to SNMP devices with enhanced features, including SNMP trap receiver and table walker. The Pro-V230 integrates UPS systems, including RFC-1628 and others. It also includes Script Basic for customizing trap receiver functions and can incorporate control algorithms into the gateway. The Pro-V230 supports BACnet IP and MS/TP.

*MARKETS: Commercial, Institutional, Industrial*

**Babel Buster Pro-V230**  
Control Solutions, Inc.



## Digital Actuator

**Danfoss** / BOOTH C4506

An intelligent 4-in-1 digital actuator, bus communication device, flow indicator, and data logger, Danfoss NovoCon<sup>®</sup> S connects to Danfoss AB-QM™ PICVs to provide precise control and communication between hydronic systems and BMS. By enabling remote system control, NovoCon<sup>®</sup> S minimizes commissioning and maintenance and provides real-time system feedback for ongoing efficiency improvements.

*MARKETS: Commercial, Institutional*

**NovoCon<sup>®</sup> S Digital Actuator**  
Danfoss



## Wireless Thermostat

**Delta Controls** / BOOTH C1558

The eZNTW uses Wi-Fi to provide system level communication via BACnet IP. This makes it easy to install and ideal for retrofits. In the room, it uses EnOcean to communicate with end devices. The thermostat uses a tri-color LED display and provides many ordering options for button layout and decor.

*MARKETS: Commercial*

## Gateway Controller

**Echelon Corporation** / BOOTH C1860

Enabling integration of building automation systems with indoor and outdoor lighting systems, the Gateway controller gives facility managers a comprehensive real-time view from a single dashboard to manage all lighting devices. With an industry standard platform, it provides greater productivity, faster troubleshooting and access to a wider range of emerging smart applications.

*MARKETS: Commercial, Institutional, Industrial*

BUILDING AUTOMATION & CONTROL PRODUCTS

### Variable Frequency Drive

**Fuji Electric Corp. of America**  
BOOTH C2746

The FRENIC-Ace is the newest series full performance AC drive utilizing Fuji Electric's latest IGBT technology. Equipped with powerful 200 steps of customizable logic and PMAC motor control, FRENIC-Ace provides compact, but powerful, multi-rated specification solutions for virtually all AC drive applications and has a reliable three year standard warranty.

MARKETS: Commercial, Institutional, Industrial

### Backup Power Control

**Functional Devices, Inc.** / BOOTH C1566

Functional Devices Inc. offers a Nema 1 Metal Enclosure with UPS and BACnet interface Board. It provides backup power during power loss along with pertinent info feeding back to your BACnet network, as well as being perfect for backing up controllers in critical environments.

MARKETS: Commercial, Institutional, Industrial



**PSH550-UPS-BC Backup Power Control**  
Functional Devices, Inc.

### Infrared Refrigerant Sensor

**Genesis International, Inc.** / BOOTH C1268

The Sherlock infrared refrigerant sensor is gas specific and can now monitor even a larger number of refrigerants, with ever increasing accuracy, for monitoring at low levels without nuisance trips. When pairing the IR with a Sherlock control, installation and setup is simple.

MARKETS: Commercial, Institutional, Industrial



**TOUCH15/ 7" Capacitive Color Display + TNG15/ 4.3" Color Display**  
M2S Electronics

### Network Gateway on Chip

**Industrial Control Communications, Inc.**  
BOOTH C1151

The BTL<sup>®</sup>-Listed PicoPort module allows OEMs to easily network-enable products such as communicating devices, as well as simple devices (such as sensors) that provide only physical I/O. It includes a variety of drivers such as BACnet, Metasys N2, Siemens FLN and Modbus. A number of analog and digital I/O is also available.

MARKETS: Commercial, Institutional, Industrial



**PicoPort Communications Module**  
Industrial Control Communications, Inc.

### IoT Gateway

**KMC Controls, Inc.** / BOOTH C1552

KMC Commander is an advanced Internet of Things (IoT) platform for enterprise-level building and operations management. Commander offers cutting-edge integration, analytics and visualization technology in real-time, delivered on your mobile device. From edge to cloud, it helps maximize operational efficiency, ensure comfort, assist occupant safety and minimize energy consumption.



MARKETS: Commercial, Institutional, Industrial

**KMC Commander IoT Platform**  
KMC Controls, Inc.

### HVAC Touchscreen Thermostat

**M2S Electronics** / BOOTH C1575

M2S Electronics offers the TOUCH15 – 7" capacitive color display and TNG15 – 4.3" color display thermostats. The controllers are based on a full color LCD display with a touch screen, using the modern user interface elements that customers now expect in this category. They are communicating, which enables their use for either standalone, central operation, or as one controller in a multi-room, intelligent system. The flexible communication protocol also paves the way for remote sensors, remote controllers or even Internet-enabled system through a WiFi bridge. The control logic included can be used as the main algorithm to control your appliance, or as a simple remote dial communicating with your intelligent appliance.

MARKETS: Residential, Commercial, Institutional, Industrial

### Universal IAQ Room Controller

**Neptronic** / BOOTH C1117

IAQ ECM fan control applications are made easy with Neptronic's new SAR series universal room controller with on board CO<sub>2</sub>, VOC, temperature and humidity sensors with selectable control application profiles. The room controller has up to four simultaneous control loops and seamless control of 0-10 Vdc ECM fans. All of this in one wall-mounted room controller.

MARKETS: Commercial, Institutional, Industrial



**Universal IAQ Room Controller**  
Neptronic

### Ultrasonic Flow Meter

**Noncontact Meters, Inc.** / BOOTH C6250

Noncontact Meters' ultrasonic clamp-on transit time flow meter for monitoring flow and energy now has more communications options, including 4/20MA, Modbus RTU, BACnet/MSTP, BACnet/IP, Ethernet and more. You can monitor information locally and transmit data to your BAS.

MARKETS: Commercial, Institutional, Industrial



**NCMB/E Series Flow Meter**  
Noncontact Meters, Inc.

### BACnet System Analytics Software

**Optigo Networks Inc.** / BOOTH C861

Visual BACnet allows you to quantify the health of your BACnet system. The online software gives you an objective network health rating and runs diagnostic checks to identify problems. Visual BACnet allows you to perform comprehensive audits, troubleshoot 100 times faster without Wireshark and compare network changes over time.

MARKETS: Commercial, Institutional, Industrial

### HVAC Graphics

**QA Graphics** / BOOTH C1489

QA Graphics' new SL v5 BAS symbol library offers a competitive advantage in the building automation system industry. This library is more powerful and has new updates, which include 20% additional available graphic files, more detailed graphics and higher resolution images. Almost any system graphic can be created, with static or animated graphics.

MARKETS: Commercial, Institutional, Industrial

### Building Automation Controller and Display

**Reliable Controls Corporation**  
BOOTH C1558

The Reliable Controls<sup>®</sup> MACH-ProView™ is a powerful and elegant BACnet<sup>®</sup> Building Controller (B-BC) and BACnet Operator Display (B-OD) that provides a plenitude of attractive, high resolution, graphical interfaces for your controlled environment. Choose from a selection of configurations. Multiple LCD color themes allow the MACH-ProView to fit virtually any decor.

MARKETS: Residential, Commercial, Institutional, Industrial

**MACH-ProView™ Building Controller**  
Reliable Controls Corporation



### Temperature and Humidity Transmitter

**Sense Algi ve Kontrol Teknolojileri Ltd. Sti.** / BOOTH C1057

Sense's products offer the advantages of easy mounting, high protection class-IP67, screwless electrical connector, LCD Display and Modbus Communication. There are many types of sensors and transmitters for temperature, humidity, differential pressure, IAQ, CO, CO<sub>2</sub> and Air Velocity. OEM service is available for most of models.

MARKETS: Residential, Commercial, Institutional, Industrial

**SHT Series Humidity Transmitter**

Sense Algi ve Kontrol Teknolojileri Ltd. Sti.



BUILDING AUTOMATION & CONTROL PRODUCTS

**Adjustable Current Sensor**

**Senva Inc.** / BOOTH C1073

The Senva PreSet current sensor series is designed to monitor proof of flow on motors and pumps. Simply set the dial to match the motor nameplate, and the sensor will detect motor undercurrent conditions such as belt loss, coupling shear and mechanical failure. The PreSet method of installation removes hazardous guesswork with multi-turn adjustments in live enclosures, eliminates the potential of arc flash and saves over 15 minutes per sensor installed.

MARKETS: Commercial, Institutional, Industrial

**Spring Return Control Valve Actuator**

**Spartan Peripheral Devices**  
BOOTH C1650

Spartan's ME4840 and ME4940 Spring Return Modulating Control valve actuators are compact in size, small in price and big on features. They are normally open or closed modulating control valve actuators. Combine with Spartan valve bodies, with unique inline replaceable balanced cartridges, for 100 PSI close off. Now with selectable input ranges of 0/2- 10Vdc, 0-5Vdc, 5-10Vdc or 4-20mA.

MARKETS: Residential, Commercial, Institutional



**ME4840 Spring Return NO Actuator**  
Spartan Peripheral Devices

**BACnet Thermostat**

**TCS Basys Controls** / BOOTH C1269

TCS Basys Controls offers a powerful, advanced functionality touchscreen BACnet thermostat that provides quick configuration with an internal BACnet object explorer, affordable AHU control in a thermostat, six (6) stages of heating/cooling, flexible conventional, heat pump and modulating control with BACnet or standalone operation.

MARKETS: Residential, Commercial, Institutional

**UbiquiSTAT Model US4050 Thermostat**

TCS Basys Controls



**Water Level Controller System**

**WaterLine Controls** / BOOTH N10441

Using a new technology, WaterLine Controls uses an electronic sensor that contains multiple stainless steel probes that are inserted into the liquid being measured. These sensor probes never foul, plate or degrade, no matter the water quality. The sensor array is connected to the controller, which runs software to determine the water level and activate relays accordingly. The relays can be connected to any operation, but are primarily used for valves, pumps and alarms. Each probe on the sensor array is responsible for a different function.



**WLC6000 Electronic Water Level Control**  
WaterLine Controls  
Commercial, Institutional, Industrial

MARKETS: Residential

**Pump Process Control Software**

**WEG Electric Corp.** / BOOTH N9113

Pump Genius process control software is designed to reduce system operation and maintenance costs, while increasing process accuracy and protection. The software provides multiple pump control and protection, as well as system monitoring and protection. Pump Genius can be applied to any system that requires constant flow or pressure.

MARKETS: Commercial

**Pump Genius Control Software**  
WEG Electric Corp.



**Variable Frequency Drive**

**Yaskawa America, Inc.** / BOOTH C1140

The Z1000U Matrix drive enables building automation systems to precisely match the speed of electric motors to the load required, to meet the demand for HVAC applications, such as fans, pumps, and compressors from 7.5 to 350HP, without the extra components often required to meet the harmonic requirements of IEEE-519. Additional package configurations have been added in 2016.

MARKETS: Residential, Commercial, Institutional

**Z1000U Matrix Variable Frequency Drive**  
Yaskawa America, Inc.



**LCD Programmable Thermostat**

**World Excel Company Limited**  
BOOTH N10811

World Excel Company offers the WiFi Internet thermostat, WiFi BMS Solution for Hotel Management and WiFi for Fan Coil thermostats. They can be used for building management or home automation and can be controlled remotely via internet or intranet. Android and IOS apps are also available.

MARKETS: Residential

**TN030 Thermostat**  
World Excel Company Limited



**Zone Controls**

**ZONEFIRST** / BOOTH C3021

The By-Pass Eliminator (BPE) eliminates the need for a separate by-pass duct and damper on zoned systems by bleeding excess air into closed zones. BPE monitors the supply air pressure, and only when it increases above an adjustable setting will it modulate open dampers to the satisfied zones to balance the air pressure.

MARKETS: Residential, Commercial

ENERGY-SAVING/RENEWABLE ENERGY EQUIPMENT

**Duct Sealing System**

**Aeroseal LLC** / BOOTH N9138

The Aeroseal Mobile PRO is a complete residential duct sealing system that's ready to operate directly from the Mobile PRO trailer. Now, effective duct sealing is a fast, unobtrusive experience for the homeowner and a highly profitable service offering for dealers. Home performance expertise is also offered.

MARKETS: Residential

**Energy Recovery Wheel**

**Airxchange, Inc.** / BOOTH C4234

Airxchange is a leading manufacturer of energy recovery wheels that recycle energy from building exhaust to pre-treat fresh air prior to conditioning by an HVAC unit. Airxchange provides a segmented wheel design that allows for easy cleaning and maintenance to ensure optimal performance over the life of the HVAC system.

MARKETS: Residential, Commercial, Institutional, Industrial

**Energy Recovery Wheel Cassette**  
Airxchange, Inc.



**Solar Air Heating Panels**

**ATAS International, Inc.** / BOOTH N11917

ATAS International's solar air heating panels improve indoor air quality, reduce heating costs, contribute toward LEED Certification credits and provide strong return on investment. They also utilize free solar energy and qualify for tax incentives.

MARKETS: Residential, Commercial, Institutional, Industrial



ENERGY-SAVING/RENEWABLE ENERGY EQUIPMENT

**Energy Savings Calculator**

**Berner International Corporation**  
BOOTH N8619

Berner offers a user-friendly, energy savings estimation tool for quick payback calculations and air curtain selection. Developed in-house by Berner, the program is based on loads calculated from generalized customer input, TMY2 weather data and ASHRAE calculations. The air curtain efficiency used is based on generally accepted theory, laboratory and field tests.

MARKETS: Commercial, Institutional, Industrial

**Air Handling Unit & Motor**

**ClimateCraft** / BOOTH C1113

BalanceStream™ technology is used in fan arrangements to save money by operating at higher efficiencies over the entire operating range. It also increases ability to run at lower loads and reduces need for reheat in VAV applications. FlexSpeed™ is designed to power fan arrangements with variable frequency drives operating greater than 60 Hz.

MARKETS: Commercial

**Water Source Heat Pump**

**Comfort-Aire/MARS** / BOOTH C1520

Comfort-Aire's HBH and HBV water source heat pumps now include ECM blower motors, which automatically adapt to changing system requirements for increased operating efficiency. Other key features are compact cabinets, performance monitoring system, sound absorbing insulation, double isolation compressor mounting system and optional extended range capability.

MARKETS: Commercial, Industrial

**Under Concrete Insulation**

**Covertch - rFOIL Insulation Products**  
BOOTH N11029

Ultra Concrete Barrier - CBF is a reflective insulation and puncture-resistant vapor barrier. Ultra CBF is an under-slab insulation that provides exceptional thermal value and a strong permanent vapor and radon barrier. It is composed of a single layer of reflective sheet, laminated between two layers of ultra-strong polyethylene bubble (up to 140 psi).

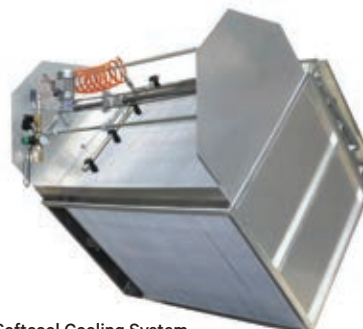
MARKETS: Residential, Commercial, Institutional, Industrial

**Integrated Energy Recovery/ Evaporative Cooler**

**Polybloc AG** / BOOTH C6146

Softcool is a fully integrated indirect evaporative cooling system, featuring a high efficiency aluminum heat exchanger with hydrophilic coating for enhanced water evaporation, a low pressure traversing water spray system with detergent wash and deicing and integrated face/bypass dampers. Softcool reaches maximum cooling efficiency with minimum water waste.

MARKETS: Commercial, Institutional, Industrial



Softcool Cooling System  
Polybloc AG

**Fume Hood Conversion Kit**

**Triatek** / BOOTH C1367

The Stable Vortex II® Fume Hood Conversion Kit adapts conventional fume hoods into high performance, low flow hoods that deliver a superior level of safety for the user, while providing substantial energy conservation and cost savings. The Stable Vortex II® Fume Hood protects users from dangerous chemical vapors, splashes and explosions during laboratory experiments.

MARKETS: Commercial, Institutional, Industrial

**Energy Saving Heating Additive**

**Wiseman Industries Ltd.** / BOOTH C6106

Thermoboost is an energy saving additive for radiant heating systems, suitable for use in radiators and underfloor heating. Using the latest Nano Fluid Formulation, Thermoboost allows a system to heat up quickly and hold onto heat for longer. The reduced boiler load allows energy savings of 20% over standard water filled systems.

MARKETS: Residential, Commercial, Institutional, Industrial

IAQ PRODUCTS (FILTERS, HUMIDIFIERS, ETC.)

**Particulate Matter Sensor**

**Acme Engineering Products, Inc.**  
BOOTH C1758

The PMPPost, an Internet of Things (IoT) enabled device, monitors three particulate matter sizes: 10, 2.5 and 1 micrometers. It sets up with the use of smart devices; the PMPPost's readings appear in real-time on a webpage portal. Applications include pollution control, clean rooms, operation theaters, construction dust monitoring, diesel particulate and coal dust monitoring.

MARKETS: Residential, Commercial, Institutional, Industrial



Ultra-sorb® Model MP  
Steam Dispersion Panel  
DriSteem

**Steam Dispersion Panel**

**DriSteem** / BOOTH C2715

The innovative design of the framed Ultra-sorb® MP steam dispersion panel ensures minimal space requirements, precise sizing, fast installation and reliable long-term operation. It features convenient same-side steam and condensate drain connections, reducing exposed piping for clean installation in the air handler or ductwork.

MARKETS: Commercial, Institutional, Industrial

**Air Filter**

**CMS Global** / BOOTH N12113

Excelair HEPA HV Filters are high efficiency particulate arresting air filters made up of micro fine glass fiber media, which can arrest particles as small of size 0.3µ. These filters are engineered and constructed for providing ultra-clean air to protect cleanrooms in pharmaceutical companies, hospitals and manufacturing industries.

MARKETS: Residential, Commercial, Institutional, Industrial

**Wireless Filtration System Monitor**

**Dust Free, LP** / BOOTH C5712

The PuriFi module monitors the status of the homeowner's in-duct air purification devices to ensure that the air being delivered to the home has been purified. The PuriFi module will alert the homeowner if his or her system's UV lights go offline or need to be replaced. In addition, it will connect to a TZOA in-duct particulate sensor (under development) to continuously monitor the amount of harmful particulate in the air stream, indicating whether the home's filtration system is active and effective.

MARKETS: Residential



PuriFi Monitor  
Dust Free, LP

**Cold Plasma Air Purifier**

**Global Plasma Solutions** / BOOTH N12112

The GPS-iClean is the first self-cleaning, no maintenance, cold plasma air purifier that can reduce TVOCs, kill pathogens and reduce particles. The GPS-iClean has a rated capacity of 0 to 4,800 CFM and can accept universal voltage input from 18VAC to 260VAC. With the included weather proof housing, the unit can be mounted indoors or out.

MARKETS: Residential, Commercial, Institutional, Industrial



GPS-iClean Air Purifier  
Global Plasma Solutions

IAQ PRODUCTS (FILTERS, HUMIDIFIERS, ETC.)

### Portable Air Quality Meter

**GrayWolf Sensing Solutions**  
BOOTH N7306

GrayWolf Sensing Solutions introduces the new AdvancedSense BE, a rugged, simple-to-use, multi-parameter environmental meter. This purpose-built instrument is suited for both walk-thru surveys and for trend-logging over hours/days/weeks/months. Use it for Indoor Air Quality (IAQ), Industrial Hygiene (IH), Facility Management (FM), Heating Ventilation and Air Conditioning (HVAC) and other environmental applications. Displaying measurements, data capture, documenting of local conditions and report generation are all extremely efficient and reliable with this handheld monitor.

MARKETS: Residential, Commercial, Institutional, Industrial

**AdvancedSense<sup>®</sup> BE**  
Portable Air Quality Data Display and Logging Meter  
GrayWolf Sensing Solutions



### Bipolar Ion Generator

**Plasma Air International** / BOOTH N7408

Plasma BAR utilizes one-piece construction instead of two, making it stronger. It is slightly thinner, so it's more aerodynamic; uses less material making it lighter; and easier to assemble, therefore more competitive. Although Plasma BAR rarely needs service, it also allows much easier access to the ionization cartridges.

MARKETS: Commercial, Institutional, Industrial



**Plasma BAR Bipolar Ion Generator**  
Plasma Air International

### In-Duct Air Purifier

**RGF Environmental Group, Inc.**  
BOOTH N9535

RGF introduces the REME<sup>®</sup> ECHO, the next evolution in whole house air treatment technology. RGF's totally innovative, patented and patent pending super hydrophilic catalytic coating technology is super charged by ultrasonic energy, creating a new highly efficient catalyst based system, resulting in superior indoor air quality with the added feature of being a sonic pest deterrent.

MARKETS: Residential, Commercial, Institutional, Industrial.

### Electronic Steam Humidifier

**Herrmidifier** / BOOTH C2931

The Herrtronic 6500 series is an ideal solution for smaller commercial and industrial applications. These high performance electronic steam humidifiers combine the purity of electrode-based steam humidification with the automation of electronic monitoring and control, to provide an economical total solution that is easy to implement for smaller capacity applications.

MARKETS: Commercial, Institutional, Industrial

### In-Duct Commercial Humidifier

**Smart Fog Inc.** / BOOTH C3644

Smart Fog TS100 provides mission critical, non-wetting, lightning fast and precise humidification for in-duct applications. It has 100% water efficiency, with no need for droplet screens or drains. The fully automated energy efficient system features simple installation and low maintenance. Smart Fog TS100 eliminates mold, bacteria and dust. The new 2016 models feature uniform distribution for equal dew point throughout the facility.

MARKETS: Commercial, Institutional, Industrial

### Dehumidifier

**Trion** / BOOTH C2931

The new ComfortDry CD55 and CD90 are low-cost dehumidifiers that meet mandated 2017 DOE efficiency requirements and are ENERGY STAR 4.0 certified. Designed for homes up to 3500 sq/ft, the CD55 and CD90 are capable of supporting dehumidification as part of whole home HVAC systems, standalone or for crawlspace/basement applications.

MARKETS: Residential



**ComfortDry G10 CD55/CD90 Dehumidifiers**  
Trion

### One-piece UV Lamp

**Ultravation, Inc.** / BOOTH C1027

Ultravation's unique one-piece UV lamp with built-in power supply streamlines using UV light for HVAC disinfection. Its compact size simplifies installation, and its designed-in flexibility accommodates any installation scenario. It also offers easy PCO purification upgrade. Service is simple with complete unit replacement at either end-of-lamp-life or to repair. The UV lamp brings practicality to UV with full germicidal effectiveness.

MARKETS: Residential



**Ultravation<sup>®</sup> UVC-Advantage<sup>™</sup> UV Light for HVAC**  
Ultravation, Inc.

### Residential UV-C Fixture

**UV Resources** / BOOTH C5417

The newly redesigned 24V residential UV-C system, Hornet, offers exceptionally safe, ease of installation and 24V operation. Its new robust power supply housing includes a light-pipe for a safe confirmation that the UV-C lamp is doing its job killing microbes, and each Hornet kit includes a hole saw, so installation is that much easier.

MARKETS: Residential



**Hornet UV-C Fixture**  
UV Resources

PLUMBING PRODUCTS

### Recirculation Kit

**AquaMotion Inc.** / BOOTH N11339

AquaMotionHOT 2 new Instant Hot Water Kits for Dedicated Return Lines feature a built in Aquastat prewired into the terminal box saving installation time and eliminates poor thermal conductivity through Pex. Pump connections available are 1/2" and 3/4" Pex, sweat and threaded NPT.

MARKETS: Residential, Commercial



**AquaMotionHot 2 Recirculation Kits**  
AquaMotion Inc.

### Fusion Piping System

**aquatechnik North America**  
BOOTH C5137

An established professional PP-RCT 125 and PP-R Super 80 fusion piping solution in Europe since 1985, aquatechnik pipe and fittings are now available in North America, with a 30-year warranty. NSF/ANSI 14, 61 and 372 certified (NSF 51 pending); the PP-RCT 125 pipe achieves high pressure and temperature thresholds. Ideal for a wide range of fluid handling applications, systems installed by aquatechnik trained and certified contractors come with a 30-year warranty protection.

MARKETS: Residential, Commercial, Institutional, Industrial

### Automated Shutoff Valve

**Bonomi North America, Inc.**  
BOOTH N7735

The new Bonomi 8E864 is an advanced lead-free valve package available in sizes 1/4-inch through 1 1/4 inches. The 8E864 consists of a Valbia<sup>®</sup> Mini quarter-turn electric actuator, perfectly matched with a lead-free full-port direct-mount ball valve, for compact and reliable automatic flow control, easily specified with just one part number.

MARKETS: Residential, Commercial, Institutional, Industrial

**8E864 Series Automated Valve Package**  
Bonomi North America, Inc.



### Pipe Marker

**Brimar Industries** / BOOTH C6515

ASME A131 has incorporated the GHS pictograms into its new 2015 revision and has recommended their use as part of the legend. Brimar's GHS markers have a specially formulated adhesive, applied with a heavy coating, to ensure adhesion to a variety of surfaces that meet regulations while promoting safety.

MARKETS: Commercial, Industrial

PLUMBING PRODUCTS

**Expansion Tank**

**Falcon Stainless, Inc.** / BOOTH C2352

Falcon Expansion Tanks are designed to maintain safe pressure in domestic water systems. They offer 100% butyl diaphragm, stainless steel sleeves to prevent corrosion, a five-year warranty, a 16 gauge solid stainless steel tank and are 100% pressure tested.

MARKETS: Residential, Commercial, Institutional, Industrial

**Plumbing Fittings**

**John Guest USA, Inc.** / BOOTH N9831

JG ProLock moves beyond push-to-connect to twist-and-lock; the audible click and indicator arrows assure installers that the fitting is secure. They connect to copper, CPVC and Pex, are code-approved, offer a 25-year warranty and are approved for behind-wall use.

MARKETS: Residential, Commercial, Institutional, Industrial



**JG Prolock Plumbing Fittings**  
John Guest USA, Inc.

**Permanent Fitting System for PE-RT and PEX Tubing**

**Legend** / BOOTH N8341

SmartClick™ Permanent Fitting System for PEX and PE-RT pipe is easy to install. Simply cut and push pipe until the audible click, then visually inspect the red indicator showing that the spring steel clamp has engaged onto the tubing.

MARKETS: Residential, Commercial

**SmartClick Permanent Fitting System**  
Legend



**PEX-a Potable Tubing**

**MrPEX® Systems** / BOOTH N7426

The NEW MrPEX® Potable PEXa tubing is offered in red, white and blue, and in coils or sticks, with complete accessories and tools. The fitting system utilizes Lead Free Brass F1807 and PPSU F2159 profile, together with a stainless steel PEX press sleeve.

MARKETS: Residential, Commercial, Institutional, Industrial

**MrPEX Potable Tubing**  
MrPEX® Systems



**Mechanical Hot Tapping Machine**

**Reed Manufacturing Company**  
BOOTH C5536

Hot tap using the DM3MECH Mechanical Hot Tapping Machine. With the right hole saw, cut or drill into copper, steel or plastic pipe for up to four valves. DM3MECH contains the base machine, along with drill bits and hole saws in the toolbox. DM3MECHB is the base machine in a toolbox only, without hole saws or arbor. Reed's Mechanical Hot Tapping Machines require a 1/2 drill motor, and valves and fittings that are all sold separately.

MARKETS: Residential, Commercial, Institutional, Industrial

**Pex Pipe**

**Rifeng** / BOOTH N11926

RIFENG pipes are NSF certified for over 10 years, have a 25-year limited warranty, are used for plumbing and heating systems and have a high chlorine resistance rating. They also offer excellent flexibility and durability with sizes from 3/8" to 2".

MARKETS: Residential, Commercial

**Custom Valve**

**RuB Inc.** / BOOTH N7113

RuB offers zero tolerance manufacturing, with 100% 24-hour unique dual pressure seal test, highly autonomous manufacturing with extensive robotic assembly, hundreds of tooling machines, in-house tool production and 100% date code traceability. RuB's custom engineered solutions include extensive design capabilities and solutions for unique applications, reducing overall cost, consolidation of current designs and enhanced application performance.

MARKETS: Residential, Commercial, Institutional, Industrial

**Chilled Beam Pump Module**

**SEMCO LLC** / BOOTH N12114

The AHR Expo 2016 Innovation Award winner in the Plumbing Category, NEUTON is the industry's smart, plug-and-play proactive condensation control device for active chilled beams. NEUTON allows a chilled beam system to be installed at a cost similar to more conventional systems, while providing high performance and energy efficiency.

MARKETS: Commercial, Institutional, Industrial

**NEUTON Control Device**  
SEMCO LLC



**Stainless Press Fittings**

**Viega LLC** / BOOTH C2529

Viega MegaPress 304 and 316 stainless steel press fittings are for press fittings for Schedule 10 to Schedule 40 piping systems. The reliable connection features a grip ring and separator ring. The Viega MegaPress 316 stainless with an EPDM sealing element is suitable for use with chilled water, compressed air and more. The MegaPress 304 stainless with an FKM sealing element is suitable for chemical and high temperature applications up to 200 psi. Available in sizes 1/2" to 2" and multiple configurations, Viega MegaPress stainless steel fittings save installation and system down time.

MARKETS: Commercial, Institutional, Industrial

**Strut Clamp**

**Walraven, Inc.** / BOOTH N10141

Walraven introduces the newest member of the W Series Strut Clamp family, with one piece design and no loose parts or bags. It is an alternative to strut clamp/conduit clamps and has a unique design, which allows for one clamp to fit multiple size pipes. This means fewer items to stock. It is also easier, faster and safer and installs with one hand. Featured is a 4-way screw head: Philips, flat, hex and square drive.

MARKETS: Commercial

**W 1000 Strut Clamp**  
Walraven, Inc.



**Metal Hose Connector/Expansion Joint**

**Twin City Hose, Inc.** / BOOTH C3829

As a global manufacturer and supplier of metal hose, seismic, rubber and metal expansion joints in the HVAC industry, TCH is recognized for their UL Classified Lead-Free metal hose connectors, CRN approved products, and they have the capabilities to manufacture in accordance with ASME B31.3 standards.

MARKETS: Commercial, Institutional, Industrial

**Uni-Flange Ball Valve**

**Webstone Company, Inc.** / BOOTH C1923

Webstone's ball valve is specifically designed to fit the industry's most popular high efficiency variable speed pumps. Its unique Uni-body design isolates the pump for replacement or service, with a single forged brass construction that saves space, replaces three components, eliminates two leak paths and shaves 18 minutes off installation time. It is guaranteed for life.

MARKETS: Residential, Commercial, Institutional, Industrial



**The Isolator® with Round Flange**  
Webstone Company, Inc.

SEE MORE THAN 60 EXHIBITORS THAT WILL BE DISPLAYING PLUMBING EQUIPMENT, TOOLS AND RELATED PRODUCTS AT THE SHOW

## SOFTWARE

## Job Management Software

**A&E Specialties, Inc.** / BOOTH N11721

A&E Specialties job management software tracks real time inventory, performs accounting functions, tracks sales activity and performs business analytics.

*MARKETS: Commercial, Industrial*

## Device & Cloud Access Control

**Ayla Networks** / BOOTH C1156

Ayla's RBAC software enables manufacturers, dealers and other users to uniquely manage their connected products through the enforcement of configurable user roles and privileges. Ayla's RBAC framework is massively robust, providing granular control over what in the system can be accessed, down to the property level, by whom, and when.

*MARKETS: Residential, Commercial*

## Thermal and Energy Analysis Software

**Cype Software** / BOOTH N11728

CYPE Software offers a group of CYPE programs for thermal and energy analysis of buildings. The applications that work with the 3D model of the building are integrated in the OPEN BIM workflow via the IFC4 standard. CYPETHERM LOADS offer thermal load calculation of buildings according to the Radiant Time Series Method (RTSM), proposed by ASHRAE, integrated in the OPEN BIM workflow. CYPETHERM EPlus offers the possibility to calculate the energy demand and consumption generated by the air conditioning and ventilation equipment of the building. CYPETHERM HVAC offers the design of HVAC installations (heating, ventilation and air conditioning). This application is integrated in the Open BIM workflow using the IFC standard.

*MARKETS: Residential, Commercial, Institutional, Industrial*

## Subcontractor Management Web Portal/Mobile App

**Data-Basics, Inc.** / BOOTH N11417

The SubAnywhere web portal is a virtual back office for coordinating the responsibilities of National Maintenance Organizations (NMO) and their service subcontractors. Its dedicated mobile app organizes common critical data, such as real-time status updates, NTE increase requests and quote/invoice submissions, while reducing paperwork, expediting contract management and streamlining billing.

*MARKETS: Residential, Commercial, Institutional, Industrial*

## Facility Application Builder Software

**DGLogic, Inc.** / BOOTH C1774

Project Assist 2.0 for Facilities is a drag and drop facility application builder. It allows users to easily create custom HTML5 interfaces in order to quickly gain complete insight into building performance and energy consumption.

*MARKETS: Commercial, Industrial*

## Field Service Software

**FIELDBOSS<sup>®</sup>** / BOOTH N11737

FIELDBOSS<sup>®</sup> Mobile can tackle the most complicated business challenges by linking the data between the field, office, customers and the equipment. With over 100 HVAC specific features, FIELDBOSS<sup>®</sup> empowers your staff to work together to deliver higher quality service with less overhead.

*MARKETS: Residential, Commercial, Institutional, Industrial*

## Field Service Management Software

**FieldConnect, Inc.** / BOOTH N11428

FieldConnect Online is a Software as a Service (SaaS) Cloud Field Service Management system for owners, service managers, dispatchers and field technicians. FieldConnect Online draws from FieldConnect's 14 years of experience working with service organizations to grow revenue, speed cash flow and decrease costs for your service organization.

*MARKETS: Residential, Commercial, Industrial*

## Remote Condition Monitoring System

**Fluke Corporation** / BOOTH N7326

Fluke is innovating industrial condition monitoring with the first system of portable sensors, a gateway and software that you can access anywhere, anytime. Each wireless sensor sends measurements every second, giving you a history of equipment performance before, during and after an event, allowing you to make preventive maintenance decisions.

*MARKETS: Commercial, Industrial*

## Field Service Management Software

**JobLogic** / BOOTH N11720

Joblogic is a cloud based field service management software for HVAC contractors and facilities managers. This year Joblogic will be showcasing their new planned maintenance, GPS tracking and Quickbooks Online integration modules. Joblogic connects your back office, techs and customers together in a single system from \$30 per month.

*MARKETS: Residential, Commercial, Institutional, Industrial*

## SMB Field Service Management Software

**Opermax** / BOOTH N11521

With Opermax field service management, you will have a 360 view of your company at your fingertips. This will save time, allow you to invoice faster, get paid faster with no more lost jobs or estimates. Features include template estimates for package deals, live updates from your field agents, inventory management and stock replenishment reminders. Also included are digital signatures, integration with accounting software and automatic alerts for estimates and invoice follow-up.

*MARKETS: Residential, Commercial, Institutional, Industrial*

**VISIT THE  
SOFTWARE CENTER  
AT THE SHOW**

(Aisles N11400 - N11700)

## Service Technician Software App

**ServiceTitan** / BOOTH N11620

ServiceTitan Mobile 2.0 is a newly released app and an extension from the core product, ServiceTitan, to help technicians better service homeowners. Built from the ground up, Mobile 2.0 incorporates best-in-class practices and an intuitive design to drive technician performance, improve customer satisfaction and automate manual processes. Because ServiceTitan is completely cloud-based, everything done in the field is also captured in the office. Now you can stay up to date on your field activities in real time.

*MARKETS: Residential*

## Customer Service/Field Service Management Software

**ServiceTrade** / BOOTH N11619

ServiceTrade provides customer service applications to service contractors including their mobile and web applications that enable admins and field technicians to deliver a better customer experience. Enhanced online customer engagement features provide an after-service report, equotes and requesting reviews from customers to influence prospects and create web content.

*MARKETS: Residential, Commercial, Institutional, Industrial*

## Device Management Cloud Gateway

**Sierra Monitor Corporation** / BOOTH C1576

With the FieldPoP<sup>™</sup> device cloud and FieldServer IoT gateway, users can remotely access and manage a gateway's local applications in a secure fashion. They can also integrate real-time device data with third-party cloud platforms to revamp service and support capabilities, as well as transforming their industrial devices into smart, cloud-connected devices.

*MARKETS: Commercial, Institutional, Industrial*

## Fleet Management Solution

**TomTom Telematics** / BOOTH N11617

The TomTom PRO 8275 ruggedized driver terminal combines best-in-class navigation and fleet technology with a fully customizable platform to tailor your drivers' device for your business. Dispatch jobs, track inventory, coach drivers, arrive on time, and log and send real-time data from the road, cutting out paper and boosting efficiency.

*MARKETS: Residential, Commercial*

## Field Management Software

**Viewpoint Construction Software**  
BOOTH N11323

Viewpoint for Field View is a cloud based and off-line mobile solution that replaces pen and paper in the field for daily logs, punch lists, safety observations, inspections, defect management, commissioning and much more.

*MARKETS: Residential, Commercial, Institutional, Industrial*

TOOLS & CONTRACTOR SUPPLIES

### Line/Hose Repair Tool

**AirSept Inc.** / BOOTH N11612

AirSept has technology for repair of metal lines and HNBR hoses with no brazing, chemicals or special tools. It covers line-to-line, line-to-hose and hose-to-hose repairs for straight or angled connections, in metric or SAE sizes. Installation often requires no line removal. Also featured is refrigerant recovery equipment and long-term antimicrobial treatment for A/C evaporators.

MARKETS: Residential, Commercial

### Pressure-Sensitive Tape

**Berry Plastics-Engineered Materials Division** / BOOTH C2139

Now available in white, Berry Plastics 444 line set tape is strong, durable and designed specifically to bond long-term to insulation surrounding outdoor line sets.

MARKETS: Residential

### Wireless Vacuum Gauge

**CPS Products, Inc.** / BOOTH C2322

The VG200W Wireless Digital Vacuum Gauge operates as a stand-alone instrument or can wirelessly connect to a smart device using the free VGLink™ application. Connected, the product can measure, monitor, diagnose, test, verify, report, store and share all aspects of a system evacuation. Additional features include client, job, geolocation and Cloud data storage capabilities.

MARKETS: Residential, Commercial, Institutional, Industrial

### Handheld Digital Multimeter

**Dawson Tools Co., a division of Mastech Group LLC** / BOOTH N10729

The Dawson DDM450B Series of Handheld Digital Multimeters w/Wireless Mobile Connectivity are quality auto-range digital multimeters with a more compact size, making them the perfect tool when space and size is an issue. These meters are great for both professionals and hobbyists alike.

MARKETS: Residential, Commercial, Institutional, Industrial

### Balancing Instrument

**Dwyer Instruments** / BOOTH C4124

The SMART Air Hood™ Balancing Instrument measures volumetric air flow from diffusers, grilles and registers in HVAC systems. The Series SAH includes Predictive Balancing, an industry first for air flow balancing. Predictive Balancing is a method of projecting the optimal flow setpoint for each diffuser, while balancing the HVAC system.

MARKETS: Residential, Commercial, Institutional, Industrial



SMART Air Hood™ Balancing Instrument: Series SAH  
Dwyer Instruments

### Gloves

**Eppco Enterprises, Inc.** / BOOTH N10839

Eppco offers commercial grade, Hi-Vis orange Nitrile gloves. They have a unique raised grip and fully textured surface. There is a superior grip when used wet or dry, with extra durability and toughness as compared to other disposable gloves.

MARKETS: Residential, Commercial, Institutional, Industrial

### Helicopter Services

**Erickson Incorporated** / BOOTH N10911

With a rated capacity of up to 25,000 pounds, (11,340kg) and unique precision placement capabilities, Erickson's Aircrane offers precision aerial heavy-lift operations. Their S-64 Aircrane is the choice for a variety of heavy-lift missions, including HVAC rooftop placement and lift projects that require absolute safety and precision.

MARKETS: Residential, Commercial, Institutional, Industrial

### Portable Vacuum Pump

**hilmor®** / BOOTH C3938

Your days of messing around with clunky, unreliable pumps are over. The two durable hoist points allow transporting your vacuum pump with ease. Simply attach the hilmor® HVACR Carrying Strap, throw it over your shoulder and get to work. Several innovative features also help make changing oil easier. The front of the pump where the oil is stored is sloped downwards, creating a natural path for oil to drain faster. An oversized sight glass allows oil to be checked easier, and an oversized oil fill port makes pouring in new oil easier. These vacuum pumps have been retooled to make evacuation as easy as possible.

MARKETS: Residential, Commercial, Industrial

**hilmor® Vacuum Pump**  
hilmor®



### Hydraulic Flaring and Swaging Kit

**Mastercool Inc.** / BOOTH C3343

Mastercool's 71675 Hydraulic Flaring and Expanding Kit, the newest members of its handheld hydraulic line of tubing tools, are an upgrade to the existing hydra-swage expanding kits, allowing the user to easily make OEM flares with a pump of the handle. The 71680 Flaring accessory can also be added to the existing hydraulic expanding kit.

MARKETS: Residential, Commercial, Institutional, Industrial

**71675 Hydraulic Flaring and Expanding Kit**  
Mastercool Inc.



### Electroplated Diamond Cutting/Grinding Wheel

**Millner-Haufen Tool Company**  
BOOTH C6849

The Millner-Haufen 4 1/2" electroplated diamond angle grinding wheel is unique in its design and functionality. It is designed to cut and grind a large variety of materials, including ferrous metal, cast iron, ductile iron, stainless steel, aluminum, tile, marble, stone, slate, cement, masonry, concrete, rebar and more.

MARKETS: Residential, Commercial, Institutional, Industrial



**M18™ FORCELOGIC™ Press Tool/2773-22**  
Milwaukee Tool

### Driver Hand Tool

**Klein Tools, Inc.** / BOOTH C4917

Klein's 7-in-1 drivers feature a unique, patented tip that switches from 1/4" to 5/16" magnetic hex sizes. Twist the thumb nut to lock tip setting. The driver includes a Schrader/Core extractor plus #2 Phillips and 1/4" slotted driver tips, as well as a non-magnetic 3/8" nut driver making it a must-have for HVAC tradespeople.

MARKETS: Residential, Commercial, Institutional, Industrial

### Power Assisted Crimper

**Malco Products, Inc.** / BOOTH C5309

Malco offers an efficient crimping solution that doesn't require a lot of explanation, set-up or adjustment. This simple attachment works with the assistance of an impact driver to crimp multiple types, sizes and thicknesses of round duct, quickly and easily. It works five times faster than manual crimping based on actual field trials.

MARKETS: Residential, Commercial



**Model C5A2 TurboCrimper Impact**  
Malco Products, Inc.

### Press Connection Tool

**Milwaukee Tool** / BOOTH C3142

The M18™ FORCELOGIC™ Press Tool sets a new standard in press as a small, intelligent press tool and the industry's first brushless press tool. The lightweight, in-line design delivers unrivaled access in tight spaces. Featuring Auto-Cycle and pre-press battery check, the tool is accurate and reliable.

MARKETS: Residential, Commercial, Industrial

**MORE THAN 75 EXHIBITORS WILL BE DISPLAYING TOOLS & OTHER LABOR-SAVING PRODUCTS AND SERVICES**

TOOLS & CONTRACTOR SUPPLIES



**PG-101 Installation Tool**  
PEXOLOGY, Inc.

**PEX Installation Tool**

**PEXOLOGY, Inc.** / BOOTH C6618

The PEXGUN is an automatic, lightweight and economical tool that attaches PEX pipe to rebar and wire mesh just as fast as you can pull the trigger. The PEXGUN is five times faster than plastic ties and three times faster than plastic staples. The PG-101 can now attach 1 PEX pipe to wire mesh.

MARKETS: Commercial

**Sheet Metal Bending Machine**

**Production Products, Inc.** / BOOTH N7009

The Profab Wrap Brake comes with segmented bottom tools that are in fixed positions, allowing virtually any size duct fittings to be bent, up to 10 feet. No tedious tooling set-ups are required, saving labor, and there is no tooling to buy. The TDC/F notch strip locator, and Slip and Drive notch guide, makes finding bend lines simple. The electric/hydraulic system eliminates the need for air, for faster cycle times than air operated machines. A 5 foot and 10 Foot model is available.

MARKETS: Residential, Commercial, Industrial



**Profab Wrap Brake**  
Production Products, Inc.

**Refrigerant Leak Repair Tool**

**RectorSeal Corporation** / BOOTH N9935

AC Leak Freeze<sup>®</sup> Pro is a safe, quick and easy refrigerant leak sealant applicator for residential and commercial refrigeration and air conditioning systems. The applicator consists of a flexible, easy-to-handle, transparent 12-inch-long refrigeration hose and an attached copper reservoir, which contains 1.5-ounces of the same trusted, non-polymer formula as the renowned syringe-based AC Leak Freeze injector.

MARKETS:  
Residential,  
Commercial,  
Institutional,  
Industrial

**AC Leak Freeze Pro**  
RectorSeal Corporation



**Hydraulic Expander Tool**

**REFCO Manufacturing US Inc.**  
BOOTH C4920

The Hydraulic Expander Tool kit comes standard with six laser engraved interchangeable expander heads to cover all size tubes from 3/8" to 1 1/8". It also comes with a heavy duty deburring tool in a rugged carrying case. It is truly a one hand operation with its 120 degree angled head. It requires less power to pump and can be used with soft copper and aluminum tubing. Another benefit is the compact pistol shape, which allows it to fit into the smallest and hard to reach spots.

MARKETS: Residential, Commercial, Institutional, Industrial

**Press Tool**

**REMS GmbH & Co KG** / BOOTH N9437

REM's pressing tool presses up to 4" diameters in just one action and in only 15 seconds. For carbon steel, stainless steel, and copper pipes used in heating, cooling, and drinking water applications and for driving REMS pressing tongs/pressing rings/XL pressing rings and other suitable makes of pressing tongs/pressing rings. The rotating pressing tongs seat with automatic locking.

MARKETS: Residential, Commercial, Industrial

**REMS Power-Press XL Press Tool**  
REMS GmbH & Co KG



**Braze-free Fittings**

**Sporlan-Parker Hannifin** / BOOTH C3306

ZoomLock braze-free fittings have jaws available for RIDGID<sup>®</sup> compact series press tools. ZoomLock compatible ball valves, solenoids, Catch-Alls and See-Alls are also available, and when used with ZoomLock make your job of joining copper tubes simpler and faster. The biggest benefits are improved efficiency, more productivity and increased profit potential.

MARKETS: Residential, Commercial, Institutional, Industrial

**Contractor Lift**

**Sumner Manufacturing Co., Inc.**  
BOOTH N10917

The 2600 Contractor Lift (referred to as Axel), features a hefty 500 kg/1100 lb. load capacity. The 2600 is designed to handle the heavy loads like beams found on today's job sites. It is available in ten or 15 foot (3-4.6 m) heights and offers a two speed winch. Axel can travel through doorways without tipping lift back, and legs fold up for compact storage or transport in a vehicle.

MARKETS: Commercial, Institutional, Industrial



**Series 2600 Contractor Lift**  
Sumner Manufacturing Co., Inc.

**Seam Locker Portable Power Tool**

**TRUMPF Power Tools** / BOOTH C1041

TRUMPF seam lockers can lock Pittsburgh seams in a self-powered, nearly silent roll. Preparation of the seams is done using a stationary machine. It forms the edges of the sheet metal part. Then a vertical seam part is placed onto the Pittsburgh seam. This allows two or more workpieces to be joined together.

MARKETS: Commercial, Institutional, Industrial

**Tool Bag**

**Veto Pro Pac** / BOOTH C5534

Veto Pro Pac's Tech MCT is a compact, yet fully featured service, repair or installation tool bag that features everything you have come to expect from Veto Pro Pac, including Veto Pro Pac's patented center panel, heavy duty construction and stabilizing injection molded waterproof base that keeps tools dry, even in the nastiest of conditions.

MARKETS: Residential, Commercial, Institutional, Industrial



**Tech MCT Tool Bag**  
Veto Pro Pac

**Roll Grooving Tool**

**Victaulic** / BOOTH C4324

The Victaulic RG5200i roll grooves 4-60"/100-1500mm Schedule 10-40 carbon steel pipe and measures four critical dimensions to ensure the groove is within specifications. This intelligent tool provides owners with easy access to material test reports on groove and pipe specifications, specifying engineers with confidence in groove reliability and reproduction and contractors with increased productivity due to greater manpower flexibility, more consistent groove dimensions and safer tool operation.

MARKETS: Residential, Commercial, Industrial

**Wire Nut Connector**

**WAGO Corporation** / BOOTH C1150

Connect any combination of solid, stranded and flexible copper wires faster and more reliably. The connector is 40% smaller, which minimizes space consumption in the junction box. It is 100% transparent, so you may visually inspect for proper strip length and complete wire insertion through its transparent housing. Operate comfortably with lower operating forces by using familiar orange levers.

MARKETS: Residential, Commercial, Institutional, Industrial



**221 Series LEVER-NUTS**  
WAGO Corporation

MISCELLANEOUS

## Standards Manual

**AABC Commissioning Group (ACG)**  
BOOTH C5017

AABC announces the new ANSI-approved AABC National Standards for Total System Balance, 7th Edition. The manual details minimum standards for total system balance, assists design professionals in achieving design intent, provides a better understanding of the scope of work required of the TAB agency and ensures proper methods and procedures are followed in the test and balance process.

MARKETS: Commercial, Institutional, Industrial

## Sealant

**Carlisle HVAC Products** / BOOTH C4334

Carlisle HVAC Products is pleased to introduce TPO Line Set Wrap to its Line Set Protection product line. Comprised of a 6.5-mil TPO membrane laminated to a butyl adhesive sealant, this unique wrap membrane is designed to be used in place of coatings. The durable, 22-mil-thick membrane provides excellent UV resistance and superior protection against damage caused by moisture, landscaping operations, equipment maintenance and insects.

MARKETS: Residential, Commercial, Industrial

## Security Grille

**Carnes Company, Inc.** / BOOTH C4237

Carnes manufactures a full line of security grilles and diffusers, including suicide deterrent models, for jail and psychiatric applications. Sizes can be customized, with aluminum and SS construction also available. These products meet all state and federal standards, including being approved by the NY State Office of Mental Health.

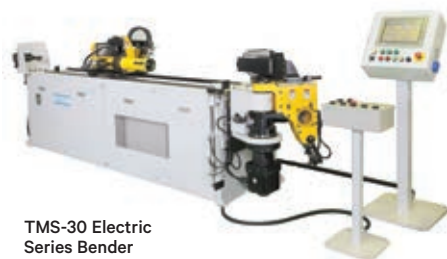


MARKETS:  
Commercial

**RSPA Security Grille**  
Carnes Company, Inc.



**PLSU2 Liner Sizer**  
Duro Dyne Corp.



**TMS-30 Electric Series Bender**  
Comco USA, Inc.

## Electric Tube Bender

**Comco USA, Inc.** / BOOTH N12121

The Electric CNC Tube Bender (No Hydraulics) FlexPlus Windows Controller, with "Tech Mode" function for part programming, provides an easy method of creating advanced part movement quickly without complicated avoidance moves or sequencing. It is equipped with Mitsubishi servos for speed and accuracy and designed with a ten minute, quick change tooling feature.

MARKETS: Industrial

## Digital Microscope

**Dino-Lite Scopes (BigC)** / BOOTH N10739

Dino-Lite Scopes' latest model in their Edge series, the AM7915MZT, has an enhanced sensor for improved image quality and an interchangeable cap design. The AM7915MZT has 5MP resolution and features Extended Depth of Field (EDOF), Automatic Magnification Reading (AMR) and Flexible LED Control (FLC). The license-free DinoCapture software includes ability to capture images, record videos, annotate and perform measurements and save and email discoveries.

MARKETS: Residential, Commercial, Institutional, Industrial

**Dino-Lite AM7915MZT Scope**  
Dino-Lite Scopes (BigC)



## Liner Sizer

**Duro Dyne Corp.** / BOOTH C2124

The PLSU2 is an automatic liner sizer. The gear driven slitter and a pulley driven cross cut blade create a powerhouse to tackle closed cell liner products, cotton fiber, Neoprene, Ceramic Blankets and more. The Universal design allows for one machine to work for both 'L to R' and 'R to L'.

MARKETS: Residential, Commercial, Institutional, Industrial

## Industrial Label Printer

**Graphic Products** / BOOTH N10531

Compliance is a click away. The DuraLabel Toro industrial label printer is self-contained to meet all your labeling needs, with a built-in keyboard, touchscreen and optional 3-hour battery. Toro can even connect to Wi-Fi. Design and print custom safety labels anywhere work takes you.

MARKETS: Commercial, Institutional, Industrial



**DuraLabel Toro Label Printer**  
Graphic Products

## Brazing Machine

**H2O Weld LLC** / BOOTH N11929

The new more powerful unit Mod 30000HD for centralized brazing systems and gas-flux accessory is used for high quality brazing. It is fast, economical, ecological, safe and easy to use. The Oxyhydrogen flame is 3650°C/7000°F through water electrolysis for brazing copper, aluminum, brass, etc. and is used for soldering, welding connections up to 3,000 mmq/4inc diameter.

MARKETS: Residential, Commercial, Institutional, Industrial

## Rooftop Support System

**Haydon Corporation** / BOOTH C4137

Made from 100% post-consumer material, meeting LEEDs criteria, the H-Block Rooftop Support System is compatible with all rooftop membranes and configurations. It is independently tested for freeze/thaw, compression/deflection and ozone resistance, making it sustainable in most climates. Applications include pipe/conduit/duct support, HVAC support, solar racking, cable tray systems and roof walkway support.

MARKETS: Commercial, Institutional, Industrial

## Cable Tie

**Hua Wei Industrial Co., Ltd.**  
BOOTH N11930

Cable ties are available in a wide range of types, sizes, materials and colors for fastening, bundling, clamping and identifying in a variety of applications throughout the physical infrastructure.

MARKETS: Residential, Commercial, Industrial

## Clinching Machine

**Norlok Technology, Inc.** / BOOTH C5607

The new SURELOK III is designed for all clinching applications and is faster, smoother, quieter and uses less air than ever before. Our stainless steel ready machine offers a no hassle 2-minute changeover for efficient operation and production.

MARKETS: Residential, Commercial, Institutional, Industrial



**Surelok III Clinching Machine**  
Norlok Technology, Inc.

## Pre-insulated Pipe

**Perma-Pipe, Inc.** / BOOTH C3831

Multi-Therm 750 Supreme is the first pre-insulated piping system fortified with Aerogel nanotechnology, making it an advanced and thermally efficient steam and hot water transportation piping system. Aerogel's Pyrogel XT<sup>®</sup> reduces cross-sectional size, which provides cost savings, reduces insulation thickness, improves thermal efficiency, extends service life and has superior resistance to water.

MARKETS: Commercial, Institutional, Industrial



**Multi-Therm 750 Supreme Piping System**  
Perma-Pipe, Inc.

## Expansion Joint

**Proco Products, Inc.** / BOOTH C5715

Proco Products, Inc. announces that they've received NSF/ANSI 61 Certification on their EPDM Spool-Type expansion joint products. These certified joints are available in sizes 1 I.D. thru 120 I.D. (for sizes less than eight diameter, no more than one joint per 175 feet of pipe shall be used).

MARKETS: Commercial, Institutional, Industrial



**EPDM Spool-Type Expansion Joints**  
Proco Products, Inc.

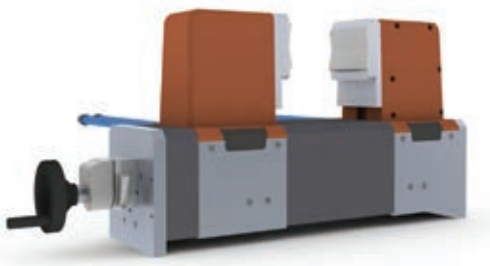
MISCELLANEOUS

### Adjustable Coil

Radyne Corporation / BOOTH N7638

Radyne's Inducto-Vise™ is the first adjustable induction coil on the market to heat a wide variety of part sizes and shapes. It was designed to revolutionize flexibility and efficiency by producing high quality products without requiring multiple coils. The Inducto-Vise™ is perfect for applications such as brazing, shrink fitting, forging and heat treating.

MARKETS: Commercial, Industrial



Inducto-Vise™ Adjustable Coil  
Radyne Corporation

### Textured Stainless Steel Tube

Rigidized Metals Corporation  
BOOTH N12029

Vipertex deep textured tube increases the process surface area of smooth tubes, enhancing the transfer of liquid for heating and cooling applications. The texture interrupts the development of boundary layers, increases the degree of turbulence, generates rotating secondary flows and reduces power requirements, making it ideal for all applications.

MARKETS: Residential, Commercial, Institutional, Industrial

### Field Joint Testing

Rovanco Piping Systems, Inc.  
BOOTH C3018

The RhinoJoint is a fully heat shrinkable joint casing designed to provide watertight sealing and protection against field joints of pre-insulated piping systems. This system is fully certified to EN 489 requirements, and when used on any Rovanco piping system, it ensures a 10 year warranty on the system.

MARKETS: Commercial, Institutional, Industrial

### Hydrocarbon Refrigerants Study Guide

RSES/RSES Journal / BOOTH C4827

With the EPA SNAP program permitting the use of HCs and other flammable refrigerants in various refrigeration systems, this manual is designed to assist technicians in understanding the requirements to safely maintain and service systems that utilize these refrigerants.

MARKETS: Residential, Commercial

### Pipe Hanger/Clamp

Spruce Environmental Technologies, Inc.  
BOOTH N7617

Hangerlok adjustable, automatic-locking pipe clamps hold pipe securely to a home or other building, allowing less vibration and movement. They are colored to match white PVC pipe and come in three and four sizes.

MARKETS: Residential, Commercial, Institutional, Industrial

Hangerlok  
Pipe Hanger/  
Clamp  
Spruce  
Environmental  
Technologies, Inc.



### Self Sealing Duct System

Stamped Fittings, Inc. / BOOTH C2541

With the use of The EDGE® you can install faster and eliminate the need to go back and caulk. All EDGE® fittings have a factory installed green EPDM gasket that is mechanically attached with a 180° hem to ensure an airtight fit when slipped into the spiral pipe.

MARKETS: Commercial, Industrial



The EDGE® Duct System  
Stamped Fittings, Inc.

### Chemical Free Water Treatment System

Superior Manufacturing Corporation  
BOOTH C2408

Superior Water Conditioners will effectively prevent scale and corrosion and eliminate existing scale and corrosion in boilers, heat exchangers, chillers, cooling towers and related plumbing systems. Chemicals used to control scale and corrosion can be totally eliminated once the product is installed.

MARKETS: Residential, Commercial, Institutional, Industrial

### Hand-Held Collaring Machine

T-DRILL Industries, Inc. / BOOTH C1130

The T-Drill T-65 SS is a portable, easy to use, collaring machine for stainless steel tube and pipe. While giving comparable quality to a commercial tee fitting, your profit will increase, as the T-65SS eliminates two welded joints and the fitting cost.

MARKETS: Commercial, Institutional, Industrial



T-65SS Collaring Machine  
T-DRILL Industries, Inc.

### Gas Detection System

Toxalert International, Inc. / BOOTH C1700

TOXALERT'S Model TOX-NET provides flexible monitoring and control for ventilation of CO and NO2 gas in apartment and commercial buildings, public parking and maintenance garage facilities. An easy to install Daisy Chain system allows up to an 96 sensors per controller, and its unique zone control and cross mapping feature on fan operations optimizes energy efficiency. USB data logging for fan run-time and energy auditing provides data for energy rebates.

MARKETS: Commercial, Institutional, Industrial



ToxNet Gas  
Detection Series  
Toxalert International, Inc.

### Seismic Engineering/ Certification

The VMC Group / BOOTH C2133

The VMC Group has been providing seismic engineering and Special Seismic Certification to Fortune 500 companies and manufacturers of HVAC, power generation and fire protection systems for more than a decade. VMC is the only Special Seismic Certification Agency to be accredited as a Product Certification Agency. Accredited by the International Accreditation Service (IAS), VMC provides Third Party Certification of non-structural building components and their mounting configurations.

MARKETS: Commercial, Industrial

### Fastening Nail

Winkler Technik GmbH / BOOTH C6719

Winkler Technik presents the PlopFix PF fastening nail for attaching foils and rails on insulation, as well as for fixing snap in foils on insulation.

MARKETS: Residential, Commercial, Institutional, Industrial

LOOKING FOR A SPECIFIC TYPE OF PRODUCT?

Find Exhibitors in over 250 Product Categories at ahrexpo.com