



Arcoliner—flush jacket—for steam or water

Arranged for but less built-in tank or tankless type water heater

unit number including model AH-6 burner	net I-B-R rating sq ft	† price each	steam and water		unit number including model AH-6 burner	net I-B-R rating sq ft	† price each
			gross I-B-R output MBH				
narrow back type—water only							
.....	\$.....	97		**W-O-351-B	485	\$616.90
.....	132		**W-O-451-B	660	732.90
.....	164		W-O-551-B	820	842.90
.....	188		W-O-651-B	940	940.90
wide back type							
			steam		water		
**S-O-153-B-T	260	677.60	97		**W-O-153-B-T	485	677.60
**S-O-154-B-T	360	776.80	132		**W-O-154-B-T	660	776.80
S-O-155-B-T	450	882.80	164		W-O-155-B-T	820	882.80
S-O-156-B-T	526	982.40	188		W-O-156-B-T	940	982.40

If narrow back unit is ordered less water heater, a 4" IPS plug is necessary to close heater opening in back section. Cover plate for water heater opening on wide back unit furnished if specified at added charge of \$6.50.

Prices on Arcoliner oil heating units include:

Arcoliner oil boiler with flush jacket. If jacket extension is desired, add \$52.70 to prices shown.

Model AH-6 Arcoflame oil burner, with hanger mounting for front firing; Detroit CA-701 stack control.

Draft stabilizer.

†Includes high temperature steel Heat Lib-O-Rator combustion chamber with 3, 4 and 5 section units; (no deduction for omission); Heat Lib-O-Rator molded refractory combustion chamber with 6 section units.

Steam only—no. 11 Arcoflame control set and nozzle. **Water only**—no. 13 Arcoflame control set and nozzle. **Vapor installations**—when units are to be used on a vapor system, see page 9 for price addition, to equivalent steam boiler size required, for substitution of Detroit 450-BC-1 vapor limit control for 450-BA-1 pressure limit control.

**If model ES-2-6 shell head Arcoflame oil burner is desired with these heating units, specify and add \$42.10 to prices above.

ASME relief valve—if water boiler is desired less ASME code relief valve, specify and deduct for omission from prices above the amount shown on page 26.

Optional Arcoflame Control Sets

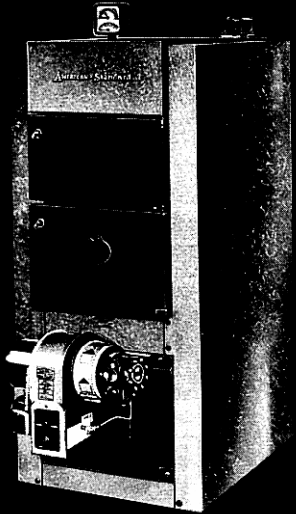
When control sets other than those included in prices shown are desired for Arcoliner units, the following added charges will be made:

Steam control set no. 12... \$19.10	Water control set no. 15... \$42.80	Water control set no. 26... \$ 46.50
Water control set no. 23... 19.80	Water control set no. 16... 45.30	Water control set no. 16-Z. 102.90

Two-stage fuel unit will be furnished when specified on order at \$10.00 extra.

See page 9 for optional solenoid cut-off valve for use with Arcoflame oil burner.

See page 14 for prices and ratings of built-in water heaters for Arcoliner units, water mixing valves, and low water cut-off available for use with Arcoliner wide back steam units.



Arcoliner

Severn—flush jacket—for steam or water

Arranged for but less built-in tank type water heater

* unit number	installed radiation sq ft	† price each	steam and water		* unit number	installed radiation sq ft	† price each
			gross output MBH	including burner model			
			steam		water		
**S-17-OB	400	\$ 874.00	146	AH-6	**W-17-OB	730	\$ 874.00
S-21-OB	460	942.00	168	AH-6	W-21-OB	840	942.00
S-25-OB	520	1013.30	188	AH-6	W-25-OB	940	1013.30
S-29-OB	600	1087.30	216	EH-6	W-29-OB	1080	1087.30
S-33-OB	690	1200.30	247	EH-6	W-33-OB	1235	1200.30
S-37-OB	780	1302.30	278	EH-6	W-37-OB	1390	1302.30

Arranged for but less built-in tank or tankless type water heater

**S-17-OB-T	400	886.00	146	AH-6	**W-17-OB-T	730	886.00
S-21-OB-T	460	954.00	168	AH-6	W-21-OB-T	840	954.00
S-25-OB-T	520	1025.30	188	AH-6	W-25-OB-T	940	1025.30
S-29-OB-T	600	1099.30	216	EH-6	W-29-OB-T	1080	1099.30
S-33-OB-T	690	1212.30	247	EH-6	W-33-OB-T	1235	1212.30
S-37-OB-T	780	1314.30	278	EH-6	W-37-OB-T	1390	1314.30

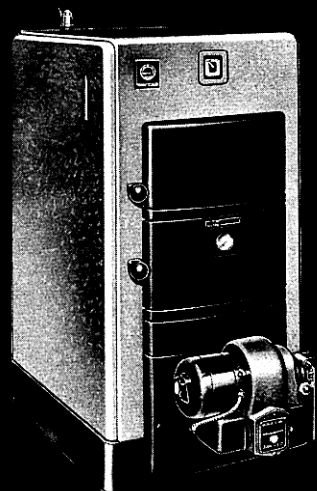
Cover plate for water heater opening will be furnished if specified for "T" type unit at added charge of \$5.80.

*Two-stage fuel unit will be furnished when specified on order at \$10.00 extra.

Prices include Arcoflame burner model shown above, with hanger mounting for front firing; Detroit CA-701 stack control.

**If model ES-2-6 shell head Arcoflame oil burner is desired with these heating units, specify and add \$42.10 to prices above.

Prices also include: see page 5 under Exbrook.



Severn



Arcoliner Wet Base—flush jacket—for steam or water

Arranged for but less built-in tank or tankless type water heater

boiler number	net I-B-R rating sq ft	* price each less jacket extension	steam and water		boiler number	net I-B-R rating sq ft	* price each less jacket extension
			gross I-B-R output MBH				
narrow back type—water only							
.....	...	\$.....	97		W-O-351	485	\$393.20
.....	132		W-O-451	660	509.20
.....	164		W-O-551	820	619.20
.....	188		W-O-651	940	717.20
wide back type							
			steam		water		
S-O-153-T	260	433.20	97		W-O-153-T	485	433.20
S-O-154-T	360	531.20	132		W-O-154-T	660	531.20
S-O-155-T	450	637.20	164		W-O-155-T	820	637.20
S-O-156-T	520	725.20	188		W-O-156-T	940	725.20

Notes: If narrow back unit is ordered less water heater, a 4" IPS plug is necessary to close heater opening in back section. Cover plate for water heater opening on wide back unit furnished if specified at added charge of **\$6.50**.

Boilers furnished with flush jacket. If jacket extension is desired add **\$52.70** to prices shown above.

Narrow back boilers are furnished with high temperature steel Heat Lib-O-Rator combustion chamber factory assembled in 3, 4 and 5 section sizes (no deduction for omission); molded refractory Heat Lib-O-Rator combustion chamber packed separately for 6 section size. Wide back boilers regularly furnished less combustion chambers—see below for description and prices if desired.

ASME relief valve—if water boiler is desired less ASME code relief valve, specify and deduct for omission from prices above the amount shown on page 26.

See page 14 for prices and ratings of built-in water heaters for Arcoliner wet base boilers, water mixing valves, and low water cut-off available for use with Arcoliner wide back steam boilers.

*Following models of Heat Lib-O-Rator molded refractory combustion chambers available for Arcoliner wet base wide back oil boilers, and will be furnished when ordered at additions to prices shown above.

for Arcoliner boiler number	Heat Lib-O-Rator model no.	maximum firing rate gallons per hour	price each
153-T } 154-T }	No. 4	1.35	\$21.90
155-T	No. 5	1.65	27.70
156-T	No. 6	2.00	33.50

Oakmont—flush jacket—for steam or water

Arranged for but less built-in tank or tankless type water heater

boiler number	net I-B-R rating sq ft	* price each	steam and water		boiler number	net I-B-R rating sq ft	* price each
			gross I-B-R output MBH				
			steam		water		
S-84	390	\$ 615.80	143		W-84	715	\$ 615.80
S-85	480	711.80	175		W-85	875	711.80
S-86	560	789.80	202		W-86	1010	789.80
S-87	640	889.80	230		W-87	1150	889.80
S-88	730	991.80	261		W-88	1305	991.80
S-89	810	1073.80	288		W-89	1440	1073.80

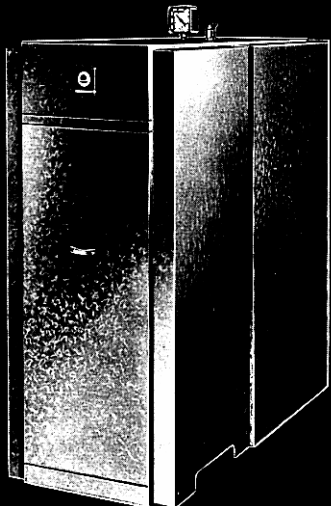
Note: Cover plate for water heater opening furnished if specified at added charge of **\$7.60**.

Boilers furnished with flush jacket. For jacket extension, add **\$63.40** to prices above.

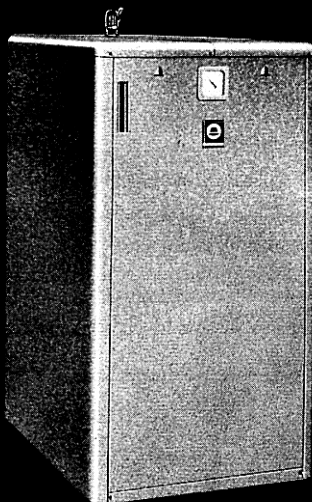
ASME relief valve—if water boiler is desired less ASME code relief valve, specify and deduct for omission from prices above the amount shown on page 26.

See page 14 for prices and ratings of built-in water heaters for Oakmont oil boilers; water mixing valves, and low water cut-off available for use with Oakmont steam boilers.

*Molded refractory combustion chambers for Oakmont boilers: prices are same as "deduct for omission" prices shown on page 5.



Arcoliner Wet Base
Extended Jacket



Oakmont

Severn—flush jacket—arranged for but less built-in tank type water heater



Severn

boiler number	installed radiation sq ft	* price each	steam and water		boiler number	installed radiation sq ft	* price each
			gross output MBH				
			steam		water		
S-17-O	400	\$ 613.20	146		W-17-O	730	\$ 613.20
S-21-O	460	681.20	168		W-21-O	840	681.20
S-25-O	520	749.20	188		W-25-O	940	749.20
S-29-O	600	823.20	216		W-29-O	1080	823.20
S-33-O	690	931.20	247		W-33-O	1235	931.20
S-37-O	780	1033.20	278		W-37-O	1390	1033.20

Arranged for but less built-in tank or tankless type water heater

S-17-O-T	400	625.20	146		W-17-O-T	730	625.20
S-21-O-T	460	693.20	168		W-21-O-T	840	693.20
S-25-O-T	520	761.20	188		W-25-O-T	940	761.20
S-29-O-T	600	835.20	216		W-29-O-T	1080	835.20
S-33-O-T	690	943.20	247		W-33-O-T	1235	943.20
S-37-O-T	780	1045.20	278		W-37-O-T	1390	1045.20

Note: Cover plate for water heater opening furnished if specified for "T" type boiler at added charge of \$5.80. Boilers furnished with flush jacket only.

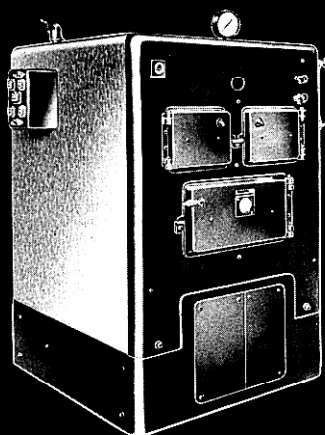
ASME relief valve—if water boiler is desired less ASME code relief valve, specify and deduct for omission from prices above the amount shown on page 26.

See page 14 for prices and ratings of built-in water heaters for Severn oil boilers; water mixing valves, and low water cut-off available for use with Severn steam boilers.

*Molded refractory combustion chambers for Severn boilers: prices are same as "deduct for omission" prices shown on page 5.



Exbrook Boiler—flush jacket—not adapted for built-in water heater



Exbrook

boiler number	net I-B-R rating sq ft	† price each	steam and water		boiler number	net I-B-R rating sq ft	† price each
			gross I-B-R output MBH				
			steam		water		
S-207	775	\$1103.20	276		W-207	1380	\$1103.20
S-208	950	1224.90	335		W-208	1675	1224.90
S-209	1130	1342.90	395		W-209	1975	1342.90
S-2010	1300	1456.90	451		W-2010	2255	1456.90
S-2011	1480	1582.90	508		W-2011	2540	1582.90
S-2012	1650	1717.60	563		W-2012	2815	1717.60
S-2013	1830	1837.60	620		W-2013	3100	1837.60

*Arranged for but less built-in tank or tankless type water heater

S-207-T	775	1115.20	276		W-207-T	1380	1115.20
S-208-T	950	1236.90	335		W-208-T	1675	1236.90
S-209-T	1130	1354.90	395		W-209-T	1975	1354.90
S-2010-T	1300	1468.90	451		W-2010-T	2255	1468.90
S-2011-T	1480	1594.90	508		W-2011-T	2540	1594.90
S-2012-T	1650	1729.60	563		W-2012-T	2815	1729.60
S-2013-T	1830	1849.60	620		W-2013-T	3100	1849.60

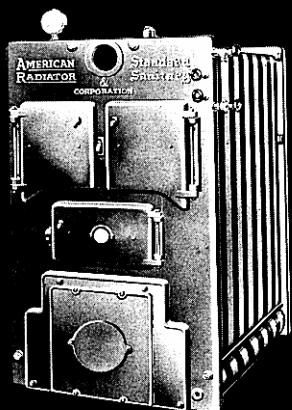
Note: Cover plate for water heater opening furnished if specified for "T" type boiler at added charge of \$6.90. *Built-in water heaters are available for use with Exbrook "T" type boilers only.

Boilers furnished with flush jacket only. ASME relief valve—if water boiler is desired less ASME code relief valve, specify and deduct for omission from prices above the amount shown on page 26.

See page 14 for prices and ratings of built-in water heaters for Exbrook "T" type oil boilers and low water cut-off available for use with Exbrook steam boilers.

†Molded refractory combustion chambers for Exbrook boilers: prices are same as "deduct for omission" prices shown on page 5.

No. 29 Water Tube—unjacketed



No. 29 Water Tube

boiler number	installed radiation sq ft	price each	steam and water		boiler number	installed radiation sq ft	price each
			gross output MBH				
			steam		water		
S-0629	1200	\$1352.00	418		W-0629	2090	\$1352.00
S-0729	1450	1548.00	499		W-0729	2495	1548.00
S-0829	1680	1746.00	572		W-0829	2860	1746.00
S-0929	1900	1942.00	642		W-0929	3210	1942.00
S-1029	2130	2140.00	714		W-1029	3570	2140.00
S-1129	2370	2336.00	789		W-1129	3945	2336.00

ASME relief valve—if water boiler is desired less ASME code relief valve, specify and deduct for omission from prices above the amount shown on page 26.



AMERICAN-Standard boilers—oil fired

A-7 Series—for steam or water—with or without jacket

boiler number	net I-B-R rating sq ft	price each		boiler number	net I-B-R rating sq ft	price each	
		unjacketed	jacketed			unjacketed	jacketed
A-705-SO	2620	\$2230.00	\$2380.00	A-705-WO	4330	\$2230.00	\$2380.00
A-706-SO	3100	2442.00	2602.00	A-706-WO	5055	2442.00	2602.00
A-707-SO	3720	2752.00	2934.00	A-707-WO	5980	2752.00	2934.00
A-708-SO	4340	3054.00	3270.00	A-708-WO	6945	3054.00	3270.00
A-709-SO	5010	3322.00	3580.00	A-709-WO	8015	3322.00	3580.00
A-710-SO	5680	3636.00	3906.00	A-710-WO	9085	3636.00	3906.00
A-711-SO	6320	3940.00	4230.00	A-711-WO	10115	3940.00	4230.00
A-712-SO	6940	4242.00	4552.00	A-712-WO	11110	4242.00	4552.00

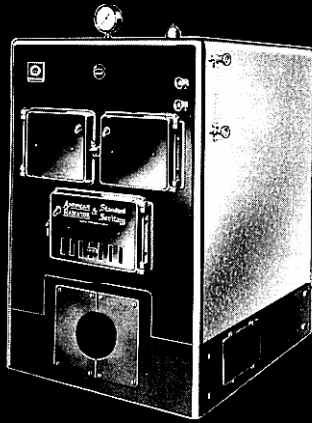
ASME relief valve—if water boiler is desired less ASME code relief valve, specify and deduct for omission from prices above the amount shown on page 26.

Optional Equipment

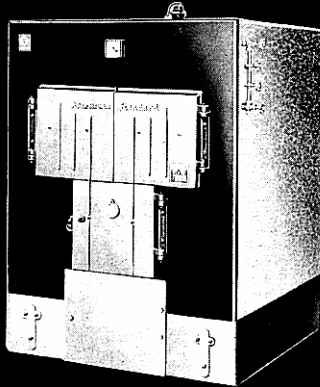
Steel pedestal bases for installation under regularly furnished 12" base for greater base heights:

Additional 8" base for section sizes 5 thru 7, add \$84.90 to prices above.

Additional 10" base for section sizes 8 thru 12, add \$141.40 to prices above.



No. 3 Redflash



A-7 Series

No. 3 Redflash—for steam or water—with or without jacket

boiler number	installed radiation sq ft	price each		boiler number	installed radiation sq ft	price each	
		unjacketed	jacketed			unjacketed	jacketed
steam				water			
3-S-8-0	2100	\$1952.00	\$2112.00	3-W-8-0	3525	\$1952.00	\$2112.00
3-S-9-0	2400	2168.00	2334.00	3-W-9-0	3990	2168.00	2334.00

ASME relief valve—if water boiler is desired less ASME code relief valve, specify and deduct for omission from prices above the amount shown on page 26.

AMERICAN-Standard oil burners

Arcoflame—for steam—hot water—warm air

model number	air tube length	capacity GPH	mounting	\$price each
Standard High Pressure Models				
*AH-6	6¾	0.70-2.00	hanger pedestal or flange	\$236.90
**AH-8	8	.70-2.00		236.90
**AH-15	15	.70-2.00		240.80
**AH-23	23	.70-2.00		242.10
*EH-6	6¾	2.00-2.80†	hanger pedestal or flange	236.90
**EH-8	8	2.00-2.80†		236.90
**EH-15	15	2.00-2.80†		240.80
**EH-23	23	2.00-2.80†		242.10
†if 3.00 gph firing rate desired, specify burner model with suffix "X", for example, EH-8X, at no extra charge.				
LF-E	6¾	3.00-7.00	flange	\$326.00
L-1	11½	3.00-7.00	pedestal	326.00
L-3	21	3.00-7.00	pedestal	326.00

Shell Head Model

*ES-2-6	6¾	0.70-1.50	hanger pedestal or flange	\$279.00
**ES-2-8	8	.70-1.50		279.00
**ES-2-15	15	.70-1.50		282.90
**ES-2-23	23	.70-1.50		284.20

V4001 A Honeywell delayed-opening solenoid oil valve, piped and wired, regular equipment with model ES-2.

*Models AH-6, EH-6 and ES-2-6 are for use with Arcoliner, Severn and Oakmont oil heating units as shown on pages 5 and 6; mounting accessories packed separately and are different for each unit. Specify which is desired.

**Specify whether pedestal or flange mounting bracket is desired.

Note: Factory installed solenoid cut-off valve for models AH and EH burners available at \$18.10 extra; if desired specify by adding suffix "M" to model number, for example AH-6-M.

§Prices above for oil burners—with no. 11 steam, no. 13 or no. 14 water, or no. 19 gravity warm air control set. For control sets other than these, add to above prices as follows:

Steam control set no. 12	\$19.10	Water control set no. 26	\$ 46.50
Water control set no. 23	19.80	Water control set no. 16-Z (2-zone)	102.90
Water control set no. 15	42.80	Forced warm air control set no. 20	12.80
Water control set no. 16	45.30		

Oil burners sold only in combination with one of Arcoflame control sets shown above.

Additional controls may be purchased separately at prices shown on page 10.

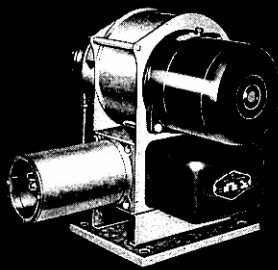
Two-stage fuel unit available with models AH, EH and ES-2, and will be furnished when specified at \$10.00 extra.

Two-stage fuel unit regular equipment with model L burners.

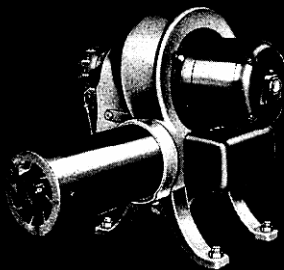
Vapor installations: When no. 11 or no. 12 Arcoflame control sets are to be used on a vapor system add \$19.96 to price for substitution of no. 450-BC-1 vapor limit control for no. 450-BA-1 pressure limit control.

Important: When substitution of T-852 is made for CA-412 such control sets will be designated by suffix "B" after control set number. For substitution add \$44.92 to price of control set selected.

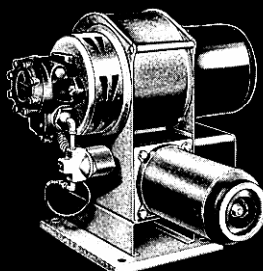
Capacities are for installations at sea level and at elevations up to 1,000 feet. For ratings above 1,000 feet, consult your nearest Amstan branch.



Model AH and EH

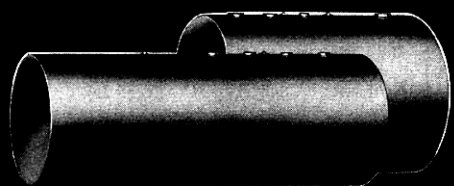


Model L

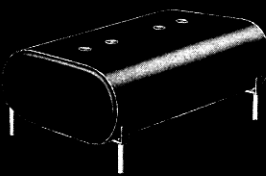


Model ES-2

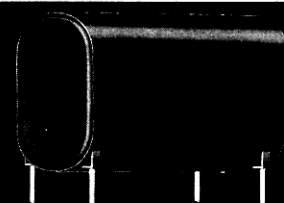
fuel oil storage tanks



Underground



Horizontal



Vertical

Underground

gallon capacity	gauge	size inches	° price each	
			zone 1	zone 2
300	12	38x 61	\$105.00	\$ 97.50
550	12	48x 71	155.00	151.25
550	10	48x 71	180.00	172.50
1000	10	48x129	282.50	265.00
1000	7	48x129	345.00	318.75

*Prices on underground or basement storage tanks are FOB Chicago, Ill. (zone 1) or Syracuse, N. Y. (zone 2).

Basement—Horizontal or Vertical

gallon capacity	gauge	size inches	° price each	
			zone 1	zone 2
275	14	27x44¼x60	\$75.00	\$72.50
275	12	27x44¼x60	85.00

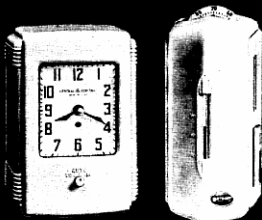
Gauges

	opening	
	1½"	2"
Galongage oil tank gauge.....	\$4.50	\$4.60
Rochester magnetic type float gauge.....	4.12	4.26

controls



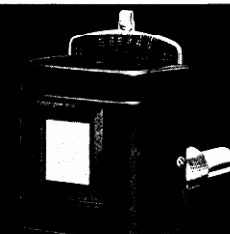
CA-412



411-CDN with CA-466



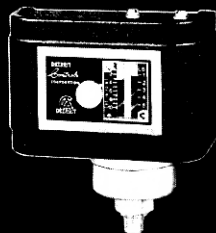
CA-420



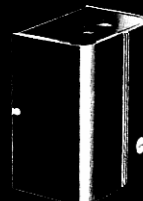
CA-655



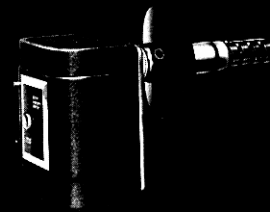
251-MJ



450-BA-1



CA-295



CA-701

Detroit Controls

number	description	price each	number	description	price each
CA-412-CH	Timed cycling thermostat, adj. heater, low voltage.....	\$18.46	CA-666-AD	Immersion hot water control, double throw switch with adjustable differential, line voltage.....	\$ 23.40
CA-412-CE	Timed cycling thermostat, non-adj. heater, low voltage.....	15.76	CA-666-R	Reverse acting low limit control, line voltage.....	20.40
CA-412-PH	Timed cycling thermostat, plain, low voltage.....	13.66	251-MJ	Clamp-on limit control, line voltage.....	18.00
411-CH	Timed cycling thermostat, low voltage.....	18.46	450-BA-1	Pressure boiler limit control, line voltage, 0-10 lbs.....	21.00
411-CDN	Day-night timed cycling thermostat.....	22.06	450-BC-1	Vapor boiler limit control, line voltage, 0-3½ lbs.....	40.96
CA-466	Time switch with transformer.....	41.10	CA-805	Limit switch, line voltage.....	15.60
411-TD	Night turn-down assembly.....	3.00	CA-810-S	Fan switch, line voltage.....	16.66
CA-420	Manual turn-down timed cycling thermostat, low voltage.....	38.92	CA-815-S	Fan and limit control, line voltage.....	31.28
CA-401	Timed cycling thermostat, line voltage.....	21.98	CA-295	Relay transformer (see note).....	23.40
CA-655	Immersion limit control, line voltage.....	20.26	CA-701	Stack control, intermittent ignition.....	64.58
CA-666	Immersion operating control, line voltage.....	20.40	CA-702	Stack control, constant ignition.....	58.28
CA-666-DT	Immersion hot water control, double throw switch, line voltage.....	22.50	CA-320	Weatherbrain control.....	120.00
			CA-405	Weather minder control package.....	56.00

Note: Detroit CA-295 relay transformer required on forced hot water installations with CA-412 timed cycling thermostat or other thermostats.

Optional Thermostats

T-86-A	Minneapolis-Honeywell thermostat.....	\$20.56	T-852	Minneapolis-Honeywell Chronotherm.....	\$63.38
T-832	Minneapolis-Honeywell Time-O-Stat.....	43.36			

Severn—flush jacket—for steam or water

Arranged for but less built-in tank type water heater

boiler number	installed radiation sq ft	price each	steam and water		boiler number	installed radiation sq ft	price each
			gross output MBH				
			steam		water		
SC-17	400	\$ 613.20	146		WC-17	730	\$ 613.20
SC-21	460	681.20	168		WC-21	840	681.20
SC-25	520	749.20	188		WC-25	940	749.20
SC-29	600	823.20	216		WC-29	1080	823.20
SC-33	690	931.20	247		WC-33	1235	931.20
SC-37	780	1033.20	278		WC-37	1390	1033.20

Arranged for but less built-in tank or tankless type water heater

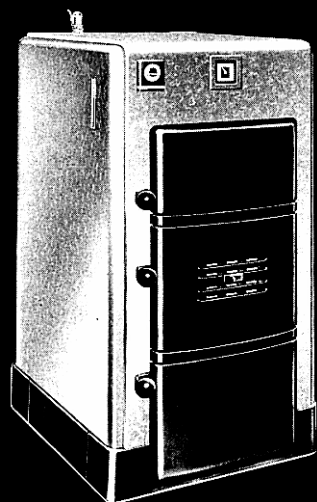
SC-17-T	400	625.20	146		WC-17-T	730	625.20
SC-21-T	460	693.20	168		WC-21-T	840	693.20
SC-25-T	520	761.20	188		WC-25-T	940	761.20
SC-29-T	600	835.20	216		WC-29-T	1080	835.20
SC-33-T	690	943.20	247		WC-33-T	1235	943.20
SC-37-T	780	1045.20	278		WC-37-T	1390	1045.20

Note: Cover plate for water heater opening will be furnished if specified for "T" type boiler at added charge of \$5.80.

Boilers furnished with flush jacket only.

ASME relief valve—if water boiler is desired less ASME code relief valve, specify and deduct for omission from prices above the amount shown on page 26.

See page 14 for prices and ratings of built-in water heaters for Severn stoker boilers, water mixing valves and low water cut-off available for use with Severn steam boilers.



Severn



Exbrook—flush jacket—for steam or water

Not adapted for built-in water heater

boiler number	net I-B-R rating sq ft	price each	steam and water		boiler number	net I-B-R rating sq ft	price each
			gross I-B-R output—MBH				
			steam		water		
SC-207	775	\$1103.20	276		WC-207	1380	\$1103.20
SC-208	950	1224.90	335		WC-208	1675	1224.90
SC-209	1130	1342.90	395		WC-209	1975	1342.90
SC-2010	1300	1456.90	451		WC-2010	2255	1456.90
SC-2011	1480	1582.90	508		WC-2011	2540	1582.90
SC-2012	1650	1717.60	563		WC-2012	2815	1717.60
SC-2013	1830	1837.60	620		WC-2013	3100	1837.60

*Arranged for but less built-in tank or tankless type water heater

SC-207-T	775	1115.20	276		WC-207-T	1380	1115.20
SC-208-T	950	1236.90	335		WC-208-T	1675	1236.90
SC-209-T	1130	1354.90	395		WC-209-T	1975	1354.90
SC-2010-T	1300	1468.90	451		WC-2010-T	2255	1468.90
SC-2011-T	1480	1594.90	508		WC-2011-T	2540	1594.90
SC-2012-T	1650	1729.60	563		WC-2012-T	2815	1729.60
SC-2013-T	1830	1849.60	620		WC-2013-T	3100	1849.60

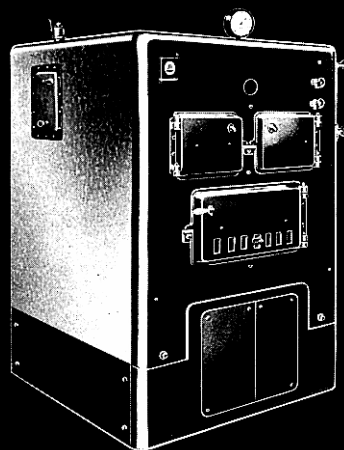
Note: Cover plate for water heater opening will be furnished if specified for "T" type boiler at added charge of \$6.90.

*Built-in water heaters are available for use with "T" type boilers only.

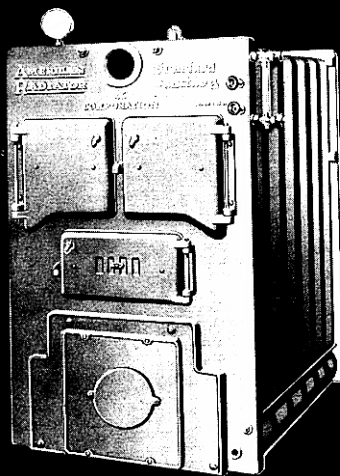
Boilers furnished with flush jacket only.

ASME relief valve—if water boiler is desired less ASME code relief valve, specify and deduct for omission from prices above the amount shown on page 26.

See page 14 for prices and ratings of built-in water heaters for Exbrook "T" type stoker boilers and low water cut-off available for use with Exbrook steam boilers.



Exbrook



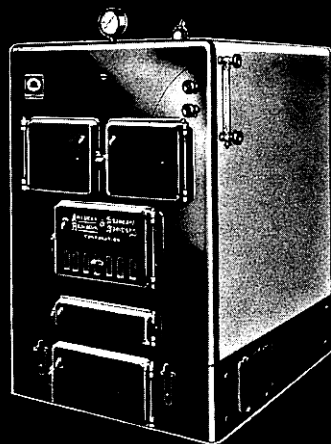
No. 29 Water Tube

No. 29 Water Tube—for steam or water

Unjacketed

boiler number	installed radiation sq ft	price each	steam and water		boiler number	installed radiation sq ft	price each
			gross output MBH				
			steam	water			
SC-29-T-5	930	\$1156.00	328		WC-29-T-5	1640	\$1156.00
SC-29-T-6	1200	1352.00	418		WC-29-T-6	2090	1352.00
SC-29-T-7	1450	1548.00	499		WC-29-T-7	2495	1548.00
SC-29-T-8	1680	1746.00	572		WC-29-T-8	2860	1746.00
SC-29-T-9	1900	1942.00	642		WC-29-T-9	3210	1942.00
SC-29-T-10	2130	2140.00	714		WC-29-T-10	3570	2140.00
SC-29-T-11	2370	2336.00	789		WC-29-T-11	3945	2336.00
SC-29-T-12	2600	2530.00	860		WC-29-T-12	4300	2530.00

ASME relief valve—if water boiler is desired less ASME code relief valve, specify and deduct for omission from prices above the amount shown on page 26.



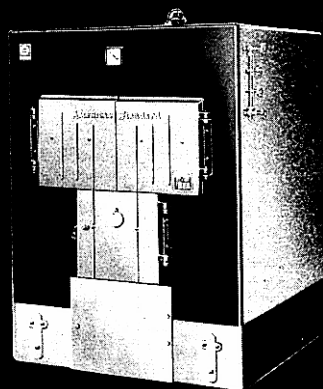
No. 3 Redflash

No. 3 Redflash—for steam or water

With or without jacket

boiler number	installed radiation sq ft	price each		boiler number	installed radiation sq ft	price each	
		unjacketed	jacketed			unjacketed	jacketed
		steam				water	
3-SC-8	2100	\$1952.00	\$2112.00	3-WC-8	3525	\$1952.00	\$2112.00
3-SC-9	2400	2168.00	2334.00	3-WC-9	3990	2168.00	2334.00

ASME relief valve—if water boiler is desired less ASME code relief valve, specify and deduct for omission from prices above the amount shown on page 26.



A-7 Series

A-7 Series—for steam or water

With or without jacket

boiler number	net I-B-R rating sq ft	price each		boiler number	net I-B-R rating sq ft	price each	
		unjacketed	jacketed			unjacketed	jacketed
		steam				water	
A-705-SC	2620	\$2230.00	\$2380.00	A-705-WC	4330	\$2230.00	\$2380.00
A-706-SC	3100	2442.00	2602.00	A-706-WC	5055	2442.00	2602.00
A-707-SC	3720	2752.00	2934.00	A-707-WC	5980	2752.00	2934.00
A-708-SC	4340	3054.00	3270.00	A-708-WC	6945	3054.00	3270.00
A-709-SC	5010	3322.00	3580.00	A-709-WC	8015	3322.00	3580.00
A-710-SC	5680	3636.00	3906.00	A-710-WC	9085	3636.00	3906.00
A-711-SC	6320	3940.00	4230.00	A-711-WC	10115	3940.00	4230.00
A-712-SC	6940	4242.00	4552.00	A-712-WC	11110	4242.00	4552.00

ASME relief valve—if water boiler is desired less ASME code relief valve, specify and deduct for omission from prices above the amount shown on page 26.

Optional Equipment—A-7 Series

Steel pedestal bases for installation under regularly furnished 12" base for greater base heights:
 Additional 8" base for section sizes 5 thru 7, add **\$84.90** to prices above.
 Additional 10" base for section sizes 8 thru 12, add **\$141.40** to prices above.

Arcoliner Dry Base—for steam or water

Flush jacket—arranged for but less built-in type water heater

boiler number	installed radiation sq ft	price each	steam and water		boiler number	installed radiation sq ft	price each
			gross output MBH				
			steam		water		
S-153-D	180	\$517.20	102		W-153-D	290	\$ 517.20
S-154-D	270	605.20	151		W-154-D	430	605.20
S-155-D	370	697.20	203		W-155-D	590	697.20

Boilers furnished with flush jacket only.

ASME relief valve—if water boiler is desired less ASME code relief valve, specify and deduct for omission from prices above the amount shown on page 26.

See page 14 for prices and ratings of built-in water heaters for Arcoliner dry base hand fired steam boilers.

Built-in water heaters not recommended for hand fired water boilers.

Severn—for steam or water

Flush jacket—arranged for but less built-in tank type water heater

boiler number	installed radiation sq ft	price each	steam and water		boiler number	installed radiation sq ft	price each
			gross output MBH				
			steam		water		
S-17	350	\$ 677.20	193		W-17	560	\$ 677.20
S-21	450	783.20	243		W-21	720	783.20
S-25	550	895.20	291		W-25	880	895.20
S-29	630	986.90	328		W-29	1010	986.90
S-33	710	1084.90	364		W-33	1140	1084.90
S-37	780	1170.90	395		W-37	1250	1170.90

Boilers furnished with flush jacket only.

ASME relief valve—if water boiler is desired less ASME code relief valve, specify and deduct for omission from prices above the amount shown on page 26.

See page 14 for prices and ratings of built-in water heaters for Severn hand fired steam boilers.

Built-in water heaters not recommended for hand fired water boilers.

No. 3 Redflash—for steam or water—with or without jacket

boiler number	installed radiation sq ft	price each		boiler number	installed radiation sq ft	price each	
		unjacketed	jacketed			unjacketed	jacketed
steam				water			
3-S-6	1500	\$1656.00	\$1794.00	3-W-6	2400	\$1656.00	\$1794.00
3-S-7	1800	1898.00	2044.00	3-W-7	2880	1898.00	2044.00
3-S-8	2100	2149.50	2309.50	3-W-8	3360	2149.50	2309.50
3-S-9	2400	2401.80	2567.80	3-W-9	3840	2401.80	2567.80

ASME relief valve—if water boiler is desired less ASME code relief valve, specify and deduct for omission from prices above the amount shown on page 26.

Note: When specified, Redflash boilers will be supplied with special grate bar equipment for burning buckwheat coal at no extra charge.

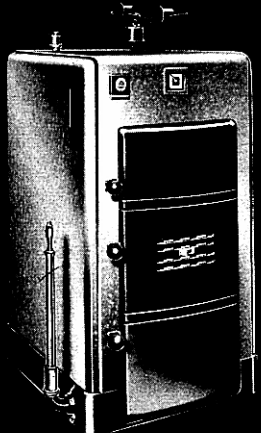
A-7 Series—for steam or water—with or without jacket

boiler number	net I-B-R rating sq ft	price each		boiler number	net I-B-R rating sq ft	price each	
		unjacketed	jacketed			unjacketed	jacketed
steam				water			
A-705-S	2610	\$2466.00	\$2616.00	A-705-W	4170	\$2466.00	\$2616.00
A-706-S	3100	2690.00	2850.00	A-706-W	4960	2690.00	2850.00
A-707-S	3720	3002.00	3184.00	A-707-W	5955	3002.00	3184.00
A-708-S	4340	3322.00	3538.00	A-708-W	6945	3322.00	3538.00
A-709-S	5010	3548.00	3806.00	A-709-W	8015	3548.00	3806.00
A-710-S	5680	3830.00	4100.00	A-710-W	9085	3830.00	4100.00
A-711-S	6320	4136.00	4426.00	A-711-W	10115	4136.00	4426.00
A-712-S	6940	4418.00	4728.00	A-712-W	11110	4418.00	4728.00

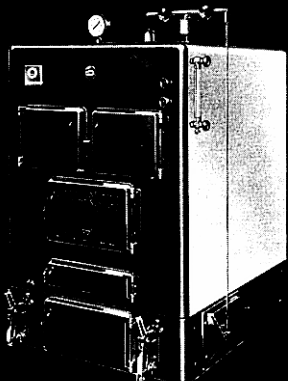
ASME relief valve—if water boiler is desired less ASME code relief valve, specify and deduct for omission from prices above the amount shown on page 26.



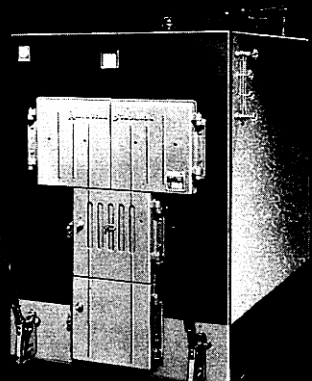
Arcoliner Dry Base



Severn



No. 3 Redflash



A-7 Series

Pop Safety Valves low pressure

(15 pounds setting, standard)

size inches	price each	
	top outlet	side outlet
3/4	\$ 6.32	\$ 7.73
1	8.19	9.52
1 1/4	10.96	12.93
1 1/2	14.48	17.15
2	21.63	25.04
2 1/2	38.16	42.99
3	54.49	63.87

Steam and Water Gauges

pressed steel case (without cock)

for steam boilers (with internal syphon)			for water boilers		
gauge number	type 20	price each	gauge number	type 23	price each
P-3 1/2 DP-1/4	Pressure—0 to 30 lbs. No. 2 Redflash; Exbrook; no. 29 water tube.....	\$5.50	T-3 1/2 DRT-1/2	Theraltimeter Nos. 2 and 3 Redflash; No. 29 water tube; Exbrook.....	\$8.60
P-4 1/2 DP-1/4	No. 3 Redflash.....	6.60	T-3 1/2 DSQT-1/2	Arcoliner—dry base and wet base.....	8.60
PV-4 1/2 DP-1/4	Pressure and vacuum— 30" x 30 lbs.	7.50	*T-3 1/2 DSQT-1/2-B	Severn; Oakmont; A-7; G-4; G-6, gas.....	9.30
PV-3 1/2 DSQ-1/4	G-6, gas.....	6.40			
*PV-3 1/2 DSQ-1/2-B	Arcoliner—dry base and wet base.....	6.40			
	Severn; Oakmont; A-7; O-GS-E; G-4, gas.....	7.80			

*Back connection—all others bottom connection.

Note: Boiler series number should be specified when ordering replacement gauges.

built-in water heaters

Taco

Built-in tank or tankless type

All tank type heaters listed rated on basis of raising temperature of domestic hot water 100° F. in three hours with a minimum boiler water temperature of 180° F. on automatically fired boilers and 212° F. on hand fired boilers.

All tankless type heaters listed rated in gallons per minute on basis of minimum boiler water temperature of 180° F. on oil fired boilers. The maintaining of 180° F. boiler water temperature with rated flow through tankless type heater is dependent on oil firing rate for the boiler.

In areas where excessive lime exists in water, use of tankless type heater not recommended except when provision is made for regularly cleaning heater. Use of tank type heater recommended in hard water areas.

heater number	type	built-in water heaters for use with following boilers, and when marked by * with oil heating units	capacity gals.		price each
			boiler water temperature		
			180°	212°	
701	tank (screw-in)	{ Arcoliner dry base—hand fired—steam } { Severn—hand fired—steam }	60		\$ 17.18
702	tank (screw-in)	{ Arcoliner dry base—hand fired—steam } { Severn—hand fired—steam }	40		15.98
703	tank (screw-in)	{ Severn—oil*, stoker, steam and water } { Severn—hand fired—steam }	66	100	21.84
704	tank (screw-in)	Arcoliner wet base—narrow back—oil*.....	65		37.02
587	tank (flange)	Arcoliner wet base—wide back—oil*.....	85		45.14
591	tank (flange)	Exbrook "T" type—oil*, stoker.....	120		64.96
592	tank (flange)	Exbrook "T" type—oil*, stoker.....	200		72.86
594	tank (flange)	Severn "T" type—oil*, stoker.....	100		72.60
595	tank (flange)	Severn "T" type—oil*, stoker.....	160		85.08
598	tank (flange)	Oakmont—oil*.....	40		31.46
599	tank (flange)	Oakmont—oil*.....	100		48.40
583	tankless (flange)	Oakmont—oil*.....	3 GPM		73.30
585	tankless (flange)	Oakmont—oil*.....	3 1/2 GPM		78.00
597	tankless (flange)	Oakmont—oil*.....	4 1/4 GPM		120.00
589	tankless (flange)	Arcoliner wet base—wide back—oil*.....	3 GPM		59.80
596	tankless (flange)	Arcoliner wet base—wide back—oil*.....	3 1/2 GPM		77.00
590	tankless (flange)	Severn "T" type—oil*.....	3 1/2 GPM		71.50
593	tankless (flange)	Exbrook "T" type—oil*.....	5 1/2 GPM		129.00
603-3	tankless (screw-in)	Arcoliner wet base—narrow back—oil*.....	★		38.30
**603-21	tankless (screw-in)	Arcoliner wet base—narrow back—oil*.....	3 GPM		46.20
**604-26	tankless (screw-in)	Arcoliner wet base—narrow back—oil*..... (4, 5 and 6 section only)	3 1/2 GPM		53.00

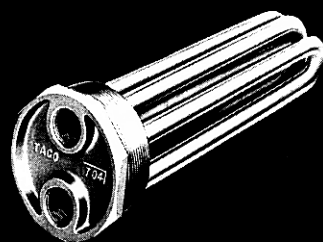
**Suffix numerals indicate linear feet of no. 114028-01 Tru-fin tubing in heater coil.

★ Taco published ratings—commercial 3 GPM; actual 2.4 GPM.

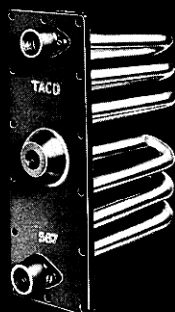
Detroit Vernatherm water mixing valves—price each

no. VD-205—non-adjustable—size 1/2"	\$15.84	size 3/4"	\$16.64
no. VD-203—adjustable	size 1/2" 22.96	size 3/4"	24.12

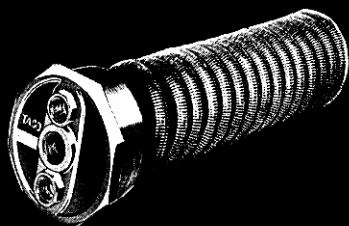
No. 369 McDonnell & Miller low water cut-off for use with Arcoliner wide back, Severn, Oakmont and Exbrook steam oil boilers and oil heating units, and Severn and Exbrook steam stoker boilers..... each \$33.50



No. 704 Tank Type (screw-in)



No. 587 Tank Type (flange)



No. 603 Tankless Type (screw-in)



No. 596 Tankless Type (flange)

Square-Heat Type "R" Series

Oil, gas and stoker fired—with or without jacket, for steam or water

boiler no.	SBI net rating		unjacketed		boiler no.	with "M" jacket	
	steam sq ft	water MBH	approx. shipping weight	*price each steam or water		approx. shipping weight	*price each steam or water
3R1	900	243	1500	\$1050.00	3R1M	1600	\$1200.00
3R2	1100	297	1650	1134.00	3R2M	1770	1282.00
3R3	1300	351	1800	1252.00	3R3M	1930	1416.00
3R4	1500	405	1950	1318.00	3R4M	2090	1480.00
3R5	1800	486	2250	1474.00	3R5M	2410	1648.00
3R6	2200	594	2475	1622.00	3R6M	2655	1810.00
3R7	2600	702	2725	1838.00	3R7M	2925	2050.00
3R8	3000	810	3000	2068.00	3R8M	3220	2296.00
3R9	3500	945	3375	2246.00	3R9M	3600	2516.00
3R10	4000	1080	3650	2424.00	3R10M	3900	2702.00
3R11	4500	1215	3850	2592.00	3R11M	4150	2888.00
3R12	5000	1350	4200	2770.00	3R12M	4450	3080.00

Square-Heat Type "R" "M" Jacket

Prices do not include indirect hot water heating coils.

Standard equipment: Fire and insulated front flue doors with frames, steel smokebox with reversible oval top or rear outlet, 14 in. metal base, 1½ in. washout plugs. Flue scraper with handle and soot scraper. Washout plug socket wrench with extra set of gaskets. Spinner blades for 3R1 to 3R8 only.

Standard steam trimmings: Safety valve, compound steam and vacuum gage, water gage, glass and two try cocks.

Standard water trimmings: ASME relief valve, combination altitude gage and thermometer.

No. 469 low water cut-off for steam boilers only add \$33.82

No. 63-B low water cut-off for hot water boilers only add 58.00

Series GW—gas fired boiler-burner unit for forced hot water heating

boiler unit only				boiler-burner unit				boiler-burner unit (with circulator)			
boiler no.	**SBI net rating MBH	appr. ship. wt.	*price each	boiler no.	**SBI net rating MBH	appr. ship. wt.	*price each	boiler no.	**SBI net rating MBH	appr. ship. wt.	*price each
W-1	74	575	\$372.00	GW-1U	74	630	\$ 724.00	GW-1UC	74	670	\$ 812.00
W-2	87	600	406.00	GW-2U	87	700	758.00	GW-2UC	87	740	846.00
W-3	108	675	470.00	GW-3U	108	780	872.00	GW-3UC	108	820	960.00
W-4	149	810	528.00	GW-4U	149	930	930.00	GW-4UC	149	970	1018.00
W-5	189	985	640.00	GW-5U	189	1080	1048.00	GW-5UC	189	1120	1158.00

Standard equipment:

Boiler unit only—built-in refractory combustion chamber, theraltimeter, ASME relief valve, flue brush and insulated metal jacket with removable top panels and coil opening panels, burner mounting flange.

Boiler-burner unit—gas burner, built-in refractory combustion chamber, insulated metal jacket, theraltimeter, low voltage thermostat, ASME relief valve, operating control, limit control, relay, #wiring harness installed, draft diverter and gas valve.

Boiler-burner unit with circulator—same as boiler-burner unit. Circulator shipped in carton, less piping.

No. 63-B low water cut-off is extra add \$54.20

Series OW—oil fired boiler-burner unit for forced hot water heating

W-2	87	600	\$406.00	OW-2U	87	710	\$ 766.00	OW-2UC	87	750	\$ 854.00
W-3	108	675	470.00	OW-3U	108	795	844.00	OW-3UC	108	835	932.00
W-4	149	810	528.00	OW-4U	149	930	914.00	OW-4UC	149	970	1002.00
W-5	189	985	640.00	OW-5U	189	1110	1026.00	OW-5UC	189	1150	1136.00

Standard equipment:

Boiler unit only—built-in refractory combustion chamber, theraltimeter, ASME relief valve, flue brush and insulated metal jacket with removable top panels, coil opening panels, split collar to receive stack control, and burner mounting flange.

Boiler-burner unit—gun type flange mounted burner, built-in refractory combustion chamber, insulated metal jacket, theraltimeter, low voltage thermostat, ASME relief valve, operating control, limit control, stack control, relay, #wiring harness installed and draft control.

Boiler-burner unit with circulator—same as boiler-burner unit. Circulator shipped in carton, less piping.

No. 63-B low water cut-off is extra add \$54.20

**All units guaranteed to produce 135% of SBI net rating.

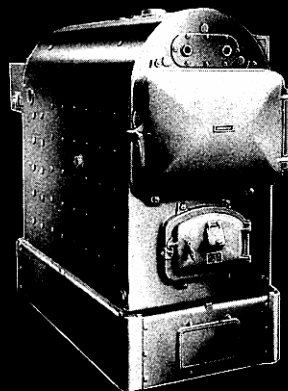
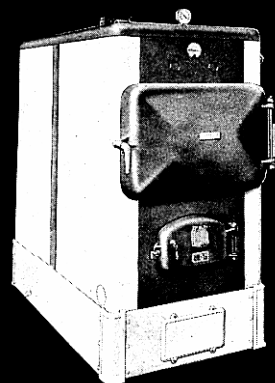
#Wiring harness designed for one circulator only—recommend wiring be omitted when more than one circulator is to be used.

*Prices on Kewanee boilers are FOB Kewanee, Ill., or Lebanon, Pa., with addition of freight surcharges outlined below:

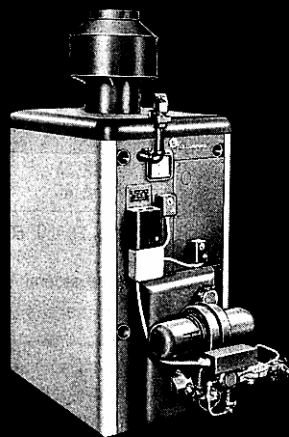
LCL freight surcharge per hundred pounds—NET

state	zone	surcharge	state	zone	surcharge	state	zone	surcharge
Alabama.....	C	\$2.20	Kansas.....	D	\$2.80	Ohio.....	A	\$1.20
Arizona.....	G	5.10	Kentucky.....	A	1.20	Oklahoma.....	D	2.80
Arkansas.....	D	2.80	Louisiana.....	D	2.80	Pennsylvania.....	A	1.20
California.....	G	5.10	Michigan.....	A	1.20	South Dakota.....	D	2.80
Colorado.....	F	3.80	Minnesota.....	B	1.50	Tennessee.....	B	1.50
Georgia.....	C	2.20	Mississippi.....	C	2.20	Texas.....	E	3.20
Illinois.....	A	1.20	Missouri.....	B	1.50	West Virginia.....	A	1.20
Indiana.....	A	1.20	New Mexico.....	F	3.80	Wisconsin.....	A	1.20
Iowa.....	B	1.50	North Dakota.....	D	2.80	Wyoming.....	F	3.80

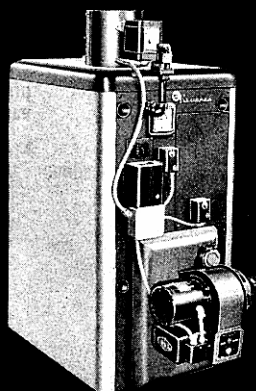
Information and prices on complete line of Kewanee boilers on request. Consult your nearest Amstan branch.



Square-Heat Type "R" Unjacketed



Series GW Gas Fired Package Boiler



Series OW Oil Fired Package Boiler